

GROVER
PRO PERCUSSION®

2023 / 2024



Our Story...



Since 1980, Grover Pro Percussion® products have been in strong demand, known as some of the finest musical instruments ever made, and can be found in virtually every corner of the world!

Grover Pro Percussion was founded in 1980 by Boston-based percussionist Neil Grover. The company's roots start with Neil aiming to reproduce the sound of the Boston Symphony's vintage Leedy triangle. His natural curiosity led him to explore why that particular triangle had such uniquely vibrant musical sound qualities. With the help of students at the Massachusetts Institute of Technology Acoustics & Vibrations Lab, Neil set out to uncover the secret of creating a triangle with prominent overtone resonance, resulting in a 9" triangle he crafted for his personal use.

Starting a percussion manufacturing company was the furthest thing from Neil's mind, but when Boston's percussionists heard the "Grover" triangle, they insisted that Neil make them one. Neil started making triangles, one at a time, to satisfy requests of his Boston-based colleagues, and soon, for top percussionists around the world. Unintentionally, the Grover Super-Overtone™ triangle was born.

After Triangles came Tambourines, Mallets, Woodblocks, Snare Drums, and more. Neil developed & tested each product personally, ensuring a high level of quality control that remains unparalleled in the industry. The company's mission has been the same since the beginning: Supply the world's finest percussion products for professionals, students, and performing ensembles.

Today, Grover Pro Percussion is owned by RBI Music, a Texas based company with 60+ years in the Music Industry, and employs a dedicated team of percussion specialists, production experts, and seasoned business managers. Despite his busy performance schedule, Neil Grover continues to oversee the development of every single product.

A Message From Our Founder...



Grover Pro Percussion was founded in 1980 with one clear goal; to design & manufacture the world's finest percussion products. As a professional percussionist, I understand the importance of using the best tools available. Our very first products, a tambourine & triangle, were developed with the rich acoustic sonority of Boston's Symphony Hall in mind. For over forty years I had the great fortune of performing with one of the world's preeminent orchestras. During that period every Grover Pro product was professionally "play tested" by my colleagues & me in Boston Symphony Hall & around the globe with the world's finest orchestras. In 1981, I attended our first PASIC show & our products sold out in the first hour! It was proof that discriminating percussionists, like you & me, recognized the value of high-quality craftsmanship. Grover Pro continued to expand over four decades to include more than 180 products. Our sales grew to include world-class percussionists around the globe, including North America, Asia, Europe, & Australia. In 2019 the opportunity to join forces with a synergistic percussion brand, TOCA, presented itself. From the start, I

recognized the possibilities, & could not have been more energized by the prospect of seeing Grover Pro as part of a larger, quality-focused enterprise. Together with RBI Music, we can fill the needs of a wider range of both professional & casual players, not to mention music educators & aspiring young percussionists.

I strongly believe that our partnership with RBI Music is a real tour-de-force. I hope you do too!

- NEIL GROVER

Considered "Best-in-Class", all Grover Pro triangles vibrate freely and ring longer than ordinary triangles. Our fabrication methods ensure that every Grover Pro triangle "sings" with a crystalline clarity that blends musically across every genre of music.

Bronze Pro Hammered™ Series

Maximum Overtone Resonance

- **TR-BPH-6** 6" Bronze Pro Hammered™ Triangle
- **TR-BPH-7** 7" Bronze Pro Hammered™ Triangle
- **TR-BPH-8** 8" Bronze Pro Hammered™ Triangle



Super-Overtone™ Series

Strong Overtone Presence

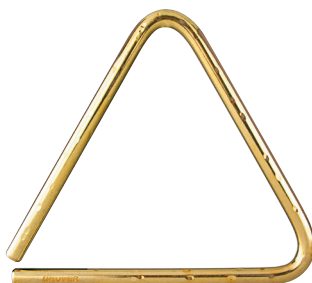
- **TR-5** 5" Super-Overtone™ Triangle
- **TR-6** 6" Super-Overtone™ Triangle
- **TR-9** 9" Super-Overtone™ Triangle



Bronze Hammered Lite™ Series

Balanced Sonority

- **TR-BHL-4** Bronze Hammered Lite™ 4" Piccolo Triangle
- **TR-BHL-5** Bronze Hammered Lite™ 5" Concert Triangle
- **TR-BHL-6** Bronze Hammered Lite™ 6" Concert Triangle
- **TR-BHL-7** Bronze Hammered Lite™ 7" Symphonic Triangle
- **TR-BHL-8** Bronze Hammered Lite™ 8" Symphonic Triangle
- **TR-BHL-9** Bronze Hammered Lite™ 9" Symphonic Triangle



Bronze Series

Sonically Focused

- **TR-B-4** Bronze 4" Piccolo Triangle
- **TR-B-5** Bronze 5" Concert Triangle
- **TR-B-6** Bronze 6" Concert Triangle
- **TR-B-7** Bronze 7" Orchestral Triangle
- **TR-B-8** Bronze 8" Orchestral Triangle
- **TR-B-9** Bronze 9" Orchestral Triangle



TRIANGLE BEATERS

GROVER
PRO PERCUSSION®

Triangle Beaters

- **TB-SD** Super Deluxe Beater Set
(Includes Alloy 303™, Stainless Steel Tubular, & Brass Tubular Beaters), Case Included
- **TB-D** Alloy 303™ Beaters - Deluxe Set
(10 beaters) 1 Pair of each - models 1, 2, 3, & 4
1 each of models 5 & 6, Case included
- **TB-S** Alloy 303™ Beaters - Standard Set
(6 beaters) 1 of each model, Case included
- **SV-TB-SET** Alloy 303™ Beaters - 3 Pc. Set
(3 Beaters) Models 1, 3, & 5. Includes Storage Tube
- **TB-TD** Stainless Steel Tubular Beaters - Deluxe Set
2 each of models 10 & 11, 1 each of models 12 & 14.
Case included
- **TB-TS** Stainless Steel Tubular Beaters - Standard Set
(4 beaters) 1 of each model. Case included
- **TB-B1** 1/4" (23g) Brass Tubular Beater
with Storage Tube
- **TB-B2** 5/16" (28g) Brass Tubular Beater
with Storage Tube
- **TB-B3** 3/8" (32g) Brass Tubular Beater
with Storage Tube
- **TB-BS** Set of 3 Brass Tubular Beaters
1 of each size with Storage Tube



TB-SD



TB-D

TB-S

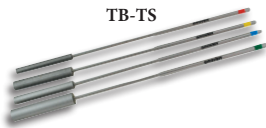


SV-TB-SET



TB-TD

TB-TS



TB-BS



WOOD & METAL PERCUSSION

Handle Castanets

- **GWC-2R** Medium Rosewood Castanets
w/belt-tension adjustment & lightweight
oak handle
- **GWC-3G** Large Granadillo Castanets w/
internal-tension adjustment, aluminum
handle & case

GWC-2R



GWC-3G



Castanet Machines

- **GWC-CM** Large Granadillo Castanets w/
Quick-Adjust™ tension adjustment. Oak
frame w/rubber feet, mounts on cymbal stand.
- **GWC-DA** Medium Rosewood Castanets w/
Belt tension adjustment. Oak frame w/rubber
feet, mounts on cymbal stand.

CWG-DA



CWG-CM



GWC-MF



Castanets Not included.

Castanet Mounting Frame

- **GWC-MF** Oak Mounting Frame
Fits most professional handle castanets

New England Rock Maple Woodblocks

- **WB-7** Small - 7"
- **WB-8** Medium - 8"
- **WB-9** Large - 9"
- **WB-10** Extra Large - 10"



Easily mount on stand or use on tabletop.

Open-Tone Temple Blocks

- **TPB-X** Standard 5 block Set w/ mounting bar & Clamp
- **TPB-XT** As above, with height adjustable stand
- **TPB-STAND** Height-Adjustable Temple Block Stand Heavy Duty, Chrome
- **TPB-XTCM** 5-Pc Temple Block Set with Stand, Case & Mallets



Slapstick

- **SS** Solid Oak, delivers an articulate, fast crack. Adjustable tension. Can be mounted on 3/8" threaded post.



Sleighbells

- **SB-CB** features 24 Chrome plated, carbon-Steel bells with TWO internal metal pellets for optimized sound production. Features include a unique rubber foot that allows for stable placement on trap table.



Sleighbell Cradle

- **SBC** Play or display your sleighbells with this versatile cradle! Fits 3/8" mounting bracket.

Professional Musical Anvil

- **PMA-A** – pitches 1 & 3 (*Higher*)
- **PMA-B** – pitches 2 & 4 (*Lower*)

Anvils produce two distinct pitches, plus a third "harmonic" sonority when stuck on the center logo.



IMPROVED!



Dual-Tone Anvil Hammer

- **PMA-H1** Hammer has 2 sides: hard (Brass) & soft (Nylon). Use on anvils or metallic idiophones.



TAMBOURINES

GROVER
PRO PERCUSSION®

**TAMBOURINES INCLUDE
FREE BAG & ROLL RING!**

Natural Head Models

**NOW WITH PERFORMANCE
EDGE HEADS!**



Custom Dry™ Series

Articulate & super crisp

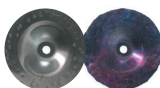
- T2/HTS 10" double-row, Heat-Treated Silver
- T2/HTS-8 8" double-row, Heat-Treated Silver



Hybrid Series

A unique blend of standard and dry jingles

- T2/HS 10" double-row, Hybrid Silver/Heat-Treated Silver



Projection Plus™ Series

World's most popular concert tambourine since 1980

- T2/GS-T 10" double row, German Silver Tunable Model
- T2/GS-8 8" double-row, German Silver
- T2/GS 10" double-row, German Silver
- T1/GS 10" single-row, German Silver
- T1/GS-12 12" single-row, German Silver



- T1/PHBR 10" Single-row, Phosphor Bronze
- T2/PHBR 10" Double-row Phosphor Bronze



- T2/GSPH 10" double-row, Silver/Bronze Combo



- T1/BC 10" Single-row, Beryllium Copper



- T2/BC 10" Double-row, Beryllium Copper



- T1/SS 10" Single-row, Spanish Silver Tambourine



Synthetic Head Models

X-Series™

A “go to” choice for players preferring a synthetic head

- **T2/GS-X** 10” double-row, German Silver
- **T2/GSPH-X** 10” double-row, Silver/Bronze Combo
- **T2/BC-X** 10” double-row, Beryllium Copper



Bantamweight™ Series

A narrower shell that’s lighter in weight

- **T2/GS-B** 10” double-row, German Silver
- **T2/HTSPH-B** 10” double-row, Heat-Treated, German Silver/Phosphor Bronze
- **T2/HS-B** 10” double-row, Hybrid German Silver



SX Series™

Our “value priced” educational models

- **SX-BR** 10” double-row, Brass with Bag
- **SX-GS** 10” double-row, German Silver with Bag
- **SX-SB** 10” double-row, Silver/Brass with Bag
- **SXP-BR** 10” double-row, Hand-Hammered Brass with Bag



Headless Models

Studio Pro™ Series

THE choice of top Nashville recording artists

- **T2/GS-H** 10” double-row, German Silver, bright sonority
- **T2/GSPH-H** 10” double-row, Silver/Bronze, full sounding
- **T2/PHBR-H** 10” double-row, Phosphor Bronze, darker sounding



MALLETS

GROVER
PRO PERCUSSION®

ChromaTone II™ Timpani Series

Bamboo Shaft - Mallets that offer a fresh, new choice in sound colors

- TMB-C10 Staccato (Topaz Orange)
- TMB-C11 General (Emerald Green)
- TMB-C12 Legato (Sapphire Blue)
- TMB-C13 Lite Staccato (Ruby Red)
- TMB-C14 Lite General (Citrine Yellow)
- TMB-C15 Super Legato (Amethyst Violet)



John Tafoya Signature Timpani Series

Bamboo Shaft - Traditional mallets geared for the discriminating timpanist

- TMB-T1 General Timpani Mallet (Green Stripe)
- TMB-T2 Articulate General Timpani Mallets (Black Stripe)
- TMB-T3 Ultra Staccato Timpani Mallets (Red Stripe)
- TMB-T4 Soft Timpani Mallets (Yellow Stripe)
- TMB-T5 Staccato Timpani Mallets (Blue Stripe)



Bass Drum Series

Aluminum Shaft – “Philadelphia style” mallets

- BDM-1A Legato Mallet (Yellow Stripe)
- BDM-2A General Mallet (Green Stripe)
- BDM-3A Staccato Mallet (Blue Stripe)
- BDM-4A Ultra Staccato Mallet (Red Stripe)
- BDM-DA-1 Legato/Staccato Dual Mallet (Yellow/Blue Stripe)
- BDM-DA-2 General/Ultra Staccato Dual Mallet (Red/Green Stripe)



Two-Tone Chime Mallets

With oblong handles that help improve accuracy

- **PM-3** Medium Chime Mallet w/two tone head
- **PM-4** Large Chime Mallet w/two tone head



Keyboard Series Mallets

Rattan Shaft - Pro level mallets with quality rattan handles

- **M-1** 1" PVC Xylo/Glock Mallet
- **M-2** 1 1/8" PVC Xylo/Glock Mallet
- **M-3** 1" Medium Poly Xylo/Glock Mallet
- **M-4** 1 1/8" Medium Poly Xylo/Glock Mallet
- **M-5** 5/8" Aluminum Solo Glock Mallet
- **M-6** 5/8" Brass Solo Glock Mallet
- **M-7** 7/8" Hard Phenolic Solo Glock Mallet
- **M-8** 1" Hard Phenolic Solo Glock Mallet
- **M-9** 1 1/8" Hard Phenolic Solo Glock Mallet
- **M-11** Hard "Fat-Head" Solo Xylo Mallet
- **M-12** Medium "Fat-Head" Solo Xylo Mallet
- **M-13** Soft "Fat-Head" Solo Xylo Mallet
- **M-14** Woodblock Mallet



Gong & Tam Tam Mallets

Innovative designs that enhance tone production

- **TT-1** Gong/Tam Tam Mallet, Large/Soft Handwound Yarn - Blue (For Gongs & Tam Tams 32" Or Larger)
- **TT--2** Gong Mallet, Medium/General Handwound Yarn - Red (For Gongs & Tam Tams up to 36")
- **TT-3** Gong Mallet, Hard/General Handwound Yarn - Green (For extra articulation on any size)
- **TT-4A** Rolling Gong Mallets, 1 Pair (Black Stripe)
- **TT-5A** Wind Gong Mallet (Yellow Stripe)



SNARE DRUMS

GROVER
PRO PERCUSSION®

G3™ Series

High Gloss Natural or Ebony finish

- **G3T-5** (5" x 14")
G3T Concert Snare Drum
- **G3T-6** (6.5" x 14")
G3T Symphonic Snare Drum
- **G3T-14** (14" x 14")
G3T Field Drum



- Itap™ Technology, independent tension & pressure adjustments
- 4 types of snare wires/cables
- 10-ply cross laminated Maple shell
- Die cast hoops & Contempo tube lugs

Will James Signature Series

Sparkle Fade Finish

- **G3T-4-WJ** (4" x 14")
Signature Snare Drum



- Itap™ Technology, independent tension & pressure adjustments
- Snare wires and cables
- 10-ply cross laminated Maple shell
- Die cast hoops & Contempo tube lugs

G1™ Series

High Gloss Natural or Ebony finish

- **G1-5** (5" x 14")
G1™ Concert Snare Drum
- **G1-6** (6.5" x 14")
G1™ Symphonic Snare Drum
- **G1-14** (14" x 14")
G1™ Field Drum



- Single lever strainer with fine tuning adjustment
- 10-ply cross laminated Maple shell
- Die cast hoop and Contempo tube lugs

G2 KeeGee™ Series

High Gloss Natural or Ebony finish

- **G2-3-N** (3" x 14")
- **G2-3-E** (3" x 14")



- 10-ply cross laminated Maple shell
- Triple flange hoops
- Cable and wire snares
- Contempo tube lugs

KeeGee is named for the famous composition "Lt. Kije Suite" by Prokofieff. The snare part is extremely soft, very difficult and asked for on every orchestra audition. Drum produces a delicate, clean sound.

GCX Series Snare Drum

10-ply, Cross Laminated Maple Shell

- **GCX-S5** (5" x 14) Concert SD
- **GCX-S6** (6.5" x 14) Symphonic SD



- Double sided Magnetic muffler
- CX multi-tonal snares
- Innovative "Radial" bearing edge
- ADV nodal venting
- Includes FREE padded case!
- Available in Ebony or Natural gloss finish

GSX™ Series Snare Drum

10-ply, Cross Laminated Maple Shell

- **GSX-S5** (5" x 14)
Concert Snare Drum
- **GSX-S6** (6.5" x 14)
Symphonic Snare Drum



- SX silver/bronze snares
- ADV nodal venting
- Includes FREE padded case!
- Available in Ebony or Natural gloss finish

PERFORMANCE SNARE SYSTEM

Retrofit the Grover Pro Performance Snare System™ to any standard snare drum. Easily attach using the enclosed heavy-duty strapping or flexible Dacron cord (for increased sensitivity). Improve sound and performance of your snare drum! While most other drum manufacturers focus on features that have negligible impact on sound quality, we believe that snare wires are the most critical part of any snare drum. It's the interaction between the wires and bottom head that account for the majority of a snare's sound. That's why we personally handcraft each snare in our own U.S. factory.

The Non-Spiral Snare (NSS) wires provide drummers with an increase of snare projection, sensitivity, & "fatness" of sound. Unlike ordinary spiral snares (which only contact the bottom head at the apex of the wire), our NSS wires make continuous contact over the entire length of the wire. This means our snares have a contact area much greater than any other wire snares! Increased contact with the bottom head means maximized attack & projection across a fuller spectrum of sonorities. Since we manufacture each unit by hand, our Non-Spiral Snares are available in wide range of sizes. Our Snares come in both standard length & extended length models.

Snare Wires

- **JD** (Jazz Dark, Light gauge)
Sensitive, dark, quick, for drums 5" or thinner
- **JB** (Jazz Bright, Light gauge)
Sensitive, bright, quick, for drums 5" or thinner
- **CD** (Club Dark, Medium gauge)
Full, dark, medium attack, most versatile, for drums of any depth
- **CB** (Club Light, Medium gauge)
Full, bright, medium attack, most versatile, for drums of any depth
- **CC** (Club Combo, Medium gauge)
Combination of Club Bright & Dark wires
- **CX** (Concert Xtreme, Combo)
Full range for concert or drumset, improves sound of any standard SD
- **SD** (Stadium Dark, Heavy gauge)
Strong attack, dark, fat, for drums 6" or deeper
- **SB** (Stadium Bright, Heavy gauge)
Strong attack, bright, fat, for drums 6" or deeper
- **SX** (Medium gauge orchestral)
Silver Wire/Bronze Cable Combo, sensitive & dry, powerful response; like traditional gut snares.



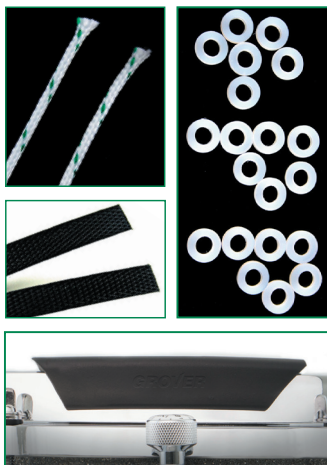
Applications

Model	Projection	Sensitivity	Brightness
Jazz Dark	Low	Low	Low
Jazz Bright	Low	Low	High
Club Dark	Medium	Medium	Low
Club Combo	Medium	Medium	Medium
SX Wire/Cable	Medium	Medium	Medium
Club Bright	Medium	Medium	High
Stadium Dark	High	Low	Low
Stadium Bright	High	Low	High



SNARE DRUM ACCESSORIES

- **CD-1** Dacron Snare Cord.
- **SS-1** Super-durable black Snare Strapping
- **NW** Nylon washers (20 count)
- **RG** Rim Guard



TRIANGLE ACCESSORIES

(Triangles Not Included)

- **CT-L** Case fits up to 9" triangle
- **CT-S** Case fits up to 6" triangle
(Photo Not Shown)
- **TB-CSE** Beater case
(Photo Not Shown)



CT-L

- **DTM** Dual Triangle Mount
- **PW-TA** Triangle Arm



PW-TA



DTM

- **PTC** Professional Triangle Clip
(Natural Wood)
- **SV-TC** Sound Values™ Triangle Clip
(Black Plastic)



SV-TC



PTC

TAMBOURINE ACCESSORIES

- **TMC** Tambourine Mounting Clamp
(for sizes 8" to 12")
- **FMC** Frame Drum Mounting Clamp
(for sizes 14" to 22")
- **TW** Tambourine Beeswax
- **RR** 10" Roll Ring
- **RR-8** 8" Roll Ring



TW



RR-10



CTB

BAGS

- **CTB-8** 8" Tambourine Bag
- **CTB** 10" Tambourine Bag
- **CTB-12** 12" Tambourine Bag
- **TPB-CASE** Temple Block Case



TPB-CASE

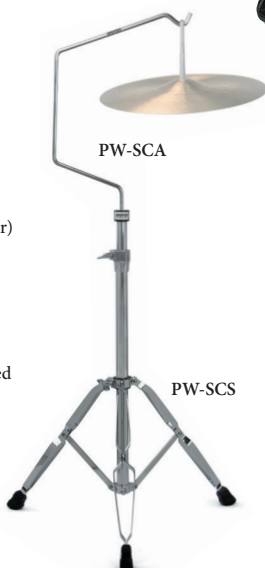
HEAD REPLACEMENT KITS

(Photos Not Shown)

- **HK-8** 8" Head Replacement Kit
- **HK-10** 10" Head Replacement Kit
- **HK-12** 12" Head Replacement Kit

MOUNTS & STANDS

- **PW-AMP** Accessory Mounting Post
(Photo Not Shown)
- **PW-CL** Suspended Cymbal loops (Pair)
(Photo Not Shown)
- **PFR** Adjustable Percussion Foot Rest
- **PW-MA** Multi-Stand Adapter
- **PW-SCS** Height Adjustable, Suspended Cymbal stand with Cymbal Arm, Multi-Stand Adapter & Cymbal Loop
(Cymbal Not Included)
- **PW-SCA** Suspended Cymbal Arm with cymbal loop (Stand Not Included)



PW-SCA



PW-MA



PFR

Percussion Road Case

• PRC-1

Dimensions: 54" H x 24" W x 24" D

Weight: 125 lbs



*Lid Converts to
Padded Trap Table!*



- 3 accessory drawers - 4", 6" & 8" deep
- 4 compartments for storing drums, cymbals, & stands
- Locking front lid converts to padded trap table
- Locking caster wheels

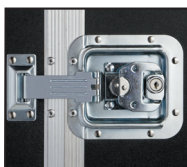
Percussion Tour Box

• PTB

Dimensions: 42"H x 29" W x 28"D

Weight: 148 lbs

- Store stands inside the door pouch
- Deep 7" accessory drawer
- 3 compartments for drums, cymbals, & stands
- Locking mallet drawer
- Locking caster wheels



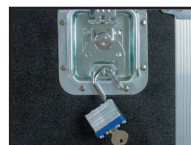
Percussion Work Station

- PW

Dimensions: 36.5"H x 25.5" W x 21"D

Weight: 98 lbs

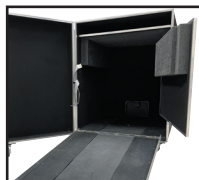
- Store dozens of cymbals and/or multiple percussion instruments
- Functions as padded trap table
- Includes 2 suspended cymbal arms and Accessory mounting post
- Locking mallet drawer
- Locking caster wheels



Timpani Road Case

- TRC

- Fits all brands of timpani
- Heavy duty ATA construction
- Internal ramp aids in loading
- 2-stage foam surround padding
- Rear wheel access panel
- Heavy duty locking casters



Available in 4 sizes:
32" - 28/29" - 25/26" - 23/24"



GROVER[®]

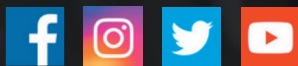
PRO PERCUSSION[®]

©2023 Grover Pro Percussion,
A Rhythm Band Instruments, LLC Brand

RBImusic
Quality musical instruments since 1961

Phone: 800-424-4724
PO Box 165117
Fort Worth, TX 76161-5117

Connect with us & share your Grover Pro experiences at:



groverpro.com • rbimusic.com

