

**RBImusic**  
musical instrument distributors since 1961

**2022**



# Sympatico™ System from Toca!



## Tunability:

The Sympatico™ System has an innovative, and proprietary, internal tuning design. It's significantly lighter than traditional tuning systems, easy to use, and there's no extra bulky, heavy, hardware attached to the side of the drum to get in your way. In fact, it's hidden inside! The sound is at once amazing and, by virtue of the ability to tune, uniquely your own.



## Available Drums:

Toca is also introducing the new Freestyle II Tubadoras and Gathering Drums, which will come standard with the Sympatico™ System heads. Our newly rebranded Nesting Ashikos (formerly Flex Drums) will also now come standard with the New Sympatico Pre-tuned Fiber heads.



## Compatibility:

These heads are designed to simply integrate with Toca's existing line of Freestyle II Nesting Drums including Djembes, Tom-Toms & Djun-Djuns. If you already have one of these instruments, pop on a new Sympatico™ tunable head and bring your playing, and your sound, to a whole new level.



## The Heads:

There are three different head styles; Fiber, Fiber with Dot and Synthetic Leather, which offer bright/high, mellow/mid, or bass/low tones for any compatible instrument.

Drum Type	Available Sizes						"Stock" Head Part #	Head Description
	8	10	12	14	16	18		
Nesting Djembes (Available with Pretuned or Tunable Fiber heads)	●	●	●				TP-TSSFPxx	Sympatico Pretuned Fiber Head
	●	●	●				TP-TSSFTxx	Sympatico Tunable Fiber Head
Nesting Ashikos		●	●				TP-TSSFPxx	Sympatico Pretuned Fiber Head
		●	●				TP-TSSSLTxx	Sympatico Tunable Synthetic Leather Head
Tubadoras (Available with Tunable Fiber or Tunable Synthetic Leather heads)		●	●	●			TP-TSSFTxx	Sympatico Tunable Fiber Head
		●	●	●			TP-TSSFPxx	Sympatico Pretuned Fiber Head w/ Dot
Nesting Dunduns			●	●	●		TP-TSSFPxx	Sympatico Pretuned Fiber Head w/ Dot
Nesting Tom-Toms			●	●	●		TP-TSSFPxx	Sympatico Pretuned Fiber Head w/ Dot
Gathering Drums						●	TP-TSSSLPxx	Sympatico Pretuned Synthetic Leather Head

Head Type	Available Sizes						Part #	Head Description
	8	10	12	14	16	18		
Pretuned Fiber	●	●	●	●		●	TP-TSSFPxx	Sympatico Pretuned Fiber Head
Tunable Fiber	●	●	●	●		●	TP-TSSFTxx	Sympatico Tunable Fiber Head
Pretuned Fiber w/ Dot		●	●	●	●	●	TP-TSSFPxx	Sympatico Pretuned Fiber Head w/ Dot
Tunable Fiber w/ Dot		●	●	●	●	●	TP-TSSFTxx	Sympatico Tunable Fiber Head w/ Dot
Pretuned Synthetic Leather		●	●	●	●	●	TP-TSSSLPxx	Sympatico Pretuned Synthetic Leather Head
Tunable Synthetic Leather		●	●	●	●	●	TP-TSSSLTxx	Sympatico Tunable Synthetic Leather Head

Toca Sympatico System Drums	
Gathering Drums	
TSSGD-18"S-SLP	18" Head, Short
TSSGD-18"T-SLP	18" Head, Tall
*(K) Kente Cloth, (LZ) Lizard, (WP) Woodstock Purple	
Nesting Ashiko	
TSSNA-10"-FP	10" Pretuned Fiber Head
TSSNA-12"-FP	12" Pretuned Fiber Head
TSSNA-3PC*K-FP	Set of 3, Pretuned Fiber Head
*(K) Kente Cloth, (WP) Woodstock Purple	
Nesting Djembe	
TSSND-8"-FP	8" Pretuned Fiber Head
TSSND-8"-FT	8" Tunable Fiber Head
TSSND-10"-FP	10" Pretuned Fiber Head
TSSND-10"-FT	10" Tunable Fiber Head
TSSND-12"-FP	12" Pretuned Fiber Head
TSSND-12"-FT	12" Tunable Fiber Head
TSSND-3PC*FP	Set of 3, Pretuned Fiber Heads
TSSND-3PC*FT	Set of 3, Tunable Fiber Heads
*(K) Kente Cloth, (WP) Woodstock Purple	
Nesting Djun Djun	
TSSND-12"-FDP	12" Pretuned Fiber Head w/Dot
TSSND-14"-FDP	14" Pretuned Fiber Head w/Dot
TSSND-16"-FDP	16" Pretuned Fiber Head w/Dot
TSSND-3PC*FDP	Set of 3, (1ea. Size) Pretuned Fiber Head w/Dot
*(K) Kente Cloth, (WP) Woodstock Purple	
Nesting Tom Tom	
TSSNT-12"-FDP	12" Pretuned Fiber Head w/Dot
TSSNT-14"-FDP	14" Pretuned Fiber Head w/Dot
TSSNT-16"-FDP	16" Pretuned Fiber Head w/Dot
TSSNT-3PC*FDP	Set of 3, (1ea. Size) Pretuned Fiber Head w/Dot
*(K) Kente Cloth, (WP) Woodstock Purple	
Tubadora Tube Drum	
TSSTB-10"-FT	10" Tunable Fiber Head
TSSTB-10"-SLT	10" Synthetic Leather Head
TSSTB-12"-FT	12" Tunable Fiber Head
TSSTB-12"-SLT	12" Synthetic Leather Head
TSSTB-14"-FT	14" Tunable Fiber Head
TSSTB-14"-SLT	14" Synthetic Leather Head
*(K) Kente Cloth, (WP) Woodstock Purple	

Toca Sympatico System Replacement Heads	
Pretuned Fiber Head w/Dot	
TP-TSSFP12	12" Pretuned Fiber w/ Dot Head
TP-TSSFP14	14" Pretuned Fiber w/ Dot Head
TP-TSSFP16	16" Pretuned Fiber w/ Dot Head
TP-TSSFP18	18" Pretuned Fiber w/ Dot Head
Tunable Fiber Head w/Dot	
TP-TSSFT12	12" Tunable Fiber w/ Dot Head
TP-TSSFT14	14" Tunable Fiber w/ Dot Head
TP-TSSFT16	16" Tunable Fiber w/ Dot Head
Pretuned Synthetic Leather Head	
TP-TSSLP08	8" Pretuned Synthetic Leather Head
TP-TSSLP10	10" Pretuned Synthetic Leather Head
TP-TSSLP12	12" Pretuned Synthetic Leather Head
TP-TSSLP14	14" Pretuned Synthetic Leather Head
TP-TSSLP16	16" Pretuned Synthetic Leather Head
TP-TSSLP18	18" Pretuned Synthetic Leather Head
Tunable Synthetic Leather Head	
TP-TSSLT08	8" Tunable Synthetic Leather Head
TP-TSSLT10	10" Tunable Synthetic Leather Head
TP-TSSLT12	12" Tunable Synthetic Leather Head
TP-TSSLT14	14" Tunable Synthetic Leather Head
TP-TSSLT16	16" Tunable Synthetic Leather Head





## CONGAS

### JIMMIE MORALES CONGAS PURPLE SPARKLE FINISH

This New Series was designed in conjunction with legendary salsa conguero, Jimmie Morales. The drums have 28" tall, seamless fiberglass shells with a stunning Purple Sparkle finish. The bigger belly shape produces deeper bass tones and crisp highs. Perfectly balanced for stage and studio use, this drum series feature Black Mirror, Chrome hardware with 6 tuning lugs, Remo Skyndeeptm heads with EasyPlay hoop, and a custom Jimmie Morales Signature Plate. Matching 7" and 8.5" Bongos are also available.

MODEL	DESCRIPTION
5111-FPS	Jimmie Morales 11" Quinto, Purple Sparkle
5111-3/4FPS	Jimmie Morales 11 3/4" Conga, Purple Sparkle
5112-1/2FPS	Jimmie Morales 12 1/2" Tumba, Purple Sparkle



### ERIC VELEZ SIGNATURE SERIES CONGAS

Eric's blurring style is based heavily on Afro-Cuban technique. He prefers a finger-sensitive, controllable drum that he doesn't have to fight to play quietly or loudly. 28" tall two-ply high premium Asian Oak construction, ideal for seated players. Classy Gun Metal Glitter Finish with Black Mirror Chrome hardware. Contemporary Afro-Cuban shape for added volume & resonance. Features 6 tuning lugs for greater tuning range. Plantation grown wood. Matching Bongos and Timbales available.

MODEL	DESCRIPTION
4911EVGG	11" Quinto
4911-3/4EVGG	11 3/4" Conga
4912-1/2EVGG	12 1/2" Tumba



### CUSTOM DELUXE CONGAS NEW SAHARA GOLD AND TRANSPARENT PURPLE FINISHES!

30" seamless fiberglass or 2-Ply, Asian Oak wood shells. Features high-luster chrome hardware, natural bison heads, and EasyPlay hoops with 6 tuning lugs. Larger bowl shape for deeper bass tones. Matching bongos available.

MODEL	DESCRIPTION
4611*	11" Quinto
4611-3/4*	11 3/4" Conga
4612-1/2*	12 1/2" Tumba

Available Finishes:

\*Fiberglass: FR = Red Sparkle, FS = Silver Sparkle

\*Wood: NW = Natural, DW = Dark Wood, BW = Blue,

BKS = Black Sparkle, SG = Sahara Gold, PW = Transparent Purple

**NEW!**  
SAHARA  
GOLD



**NEW!**  
TRANSPARENT  
PURPLE

## SYNERGY DELUXE CONGAS COFFEE FADE FINISH

Taking Toca's enormously successful Synergy line of drums to the next level, Synergy Deluxe provides a number of upgrades without breaking the bank.

The Congas have 28" tall, two-ply Asian Oak wood shells with Tucked Fiberskyn® heads by Remo®. They feature low contact counterhoops for more open sound & chrome hardware. Finished in a beautiful Luxe matte, Coffee Fade. Adjustable basket stands included with each drum. Matching 6" & 6 3/4" bongos are also available.

**2350-CF** 10" & 11" Conga Set / Basket Stands, Coffee Fade Finish

**23512-CF** Tumba w/ Basket Stand, Coffee Fade Finish

Other Available Colors:

N = Natural, PF = Purple Fade, WF = Wine Fade

**NEW!**



**COMING SOON!**



## SYNERGY FIBERGLASS JR. CONGA SET

A smaller version of the popular Synergy Conga Set. 24" tall, lightweight & durable fiberglass shells, easy to clean. 8" and 9" natural rawhide heads. Includes height adjustable stand. Available in red finish. Matching bongos available.

MODEL	DESCRIPTION
<b>2300/89-FRD</b>	8" & 9" Conga Set, Red



## PLAYER'S SERIES CONGAS

Get Toca quality components and finishes at entry-level prices. Available in 10" & 11" sets, with 2-Ply wood shells. Sets include a heavy-duty height adjustable stand. Congas have four countersunk carriage bolts on each sideplate with EasyPlay Hoops, fully tucked bison heads and 5 lugs. Matching bongos available.

MODEL	DESCRIPTION
-------	-------------

**2800\*** 10" & 11" Conga set, Wood

\*Wood Finishes: N = Natural or C = Cherry



## TRADITIONAL WOOD CONGAS

Combines a contemporary finish with the essence of Afro-Cuban tradition, all with notable old-school design. 30" Tall, Two-ply plantation grown Asian Oak shells. Beautiful Dark Wood finish with brushed chrome hardware. Traditional Afro-Cuban shape designed for added volume and resonance. Traditional hoop with extended collar. Matching bongos available.

MODEL	DESCRIPTION
-------	-------------

**3911\***

11" Quinto

**3911-3/4\***

11 3/4" Conga

**3912-1/2\***

12 1/2" Tumba

\*Finishes: T = Natural or D = Dark Wood



## ELITE PRO CONGAS

This affordable Conga set is ideal for the intermediate player who's seeking the size and sound of full sized drums. Equipped with EasyPlay Style hoop with 6 lugs. Plated chrome hardware. 28" tall, 2-Ply Asian Oak wood shells. Includes fully adjustable double conga stand with single top plate mounting bracket. Matching bongos available.

MODEL	DESCRIPTION
-------	-------------

**3100\***

11" Quinto & 11 3/4" Conga Set

**3112-12\***

12" Tumba

\* Finishes:

Crimson Maple Fade w/Chrome Hardware (CF),  
Natural Maple Fade w/Chrome Hardware (NF)



## SYNERGY FIBERGLASS AND WOOD CONGA SETS

10" & 11" rawhide heads, 28" tall. Black powder coated hardware. Produces high tonal ranges ideal for live performances. Quality fiberglass or 2-Ply wood shell construction. EasyPlay style hoops. Chrome tuning lugs. Includes height adjustable double braced, chrome & black powder coated, double conga stand. Matching bongos available.

### FIBERGLASS SETS

MODEL	DESCRIPTION
<b>2300F*</b>	10" & 11" Conga Set
<b>2300FRD-K</b>	10" & 11" Conga Set w/Bongos, Red
<b>2300FBK-K</b>	10" & 11" Conga Set w/Bongos, Black

\*Fiberglass Finishes:

WH = White, RD = Red, BK = Black

### WOOD SETS

MODEL	DESCRIPTION
<b>2300*</b>	10" & 11" Conga Set

\*Wood Finishes: Amber (AMB), Bahama Blue (BB), Rio Red (RR), Tobacco (TOB) and Natural (N).



# BONGOS

## JIMMIE MORALES BONGOS PURPLE SPARKLE FINISH

Designed in conjunction with legendary salsa conguero, Jimmie Morales. The 7" and 8.5" Bongos have seamless fiberglass shells with a stunning Purple Sparkle finish. The bongos feature Black Mirrored Chrome hardware and tuning lugs, Black Remo Skyndee™ heads with EasyPlay hoops, and a custom Jimmie Morales Signature Plate. Matching Congas are also available.

MODEL	DESCRIPTION
5100-FPS	Jimmie Morales Bongos, Purple Sparkle



## ERIC VELEZ SIGNATURE SERIES BONGOS

These unique 7" & 9" bongos have steel bottoms and are constructed of premium, 2-ply Asian Oak. Sleek, Black Mirror chrome hardware and Gun Metal Glitter Finish, gives it that old-school look with a modern flair that's sure to attract attention! Features EasyPlay hoops, and Remo tucked Fiberskyn heads, with 8 tuning lugs. Matching Congas and Timbales available.

MODEL	DESCRIPTION
4901EVGG	7" & 9" Bongos



## ERIK PIZA SIGNATURE BONGOS IRIDESCENT ORANGE FINISH

Erik Piza Signature Bongos feature Fiberglass shells with a traditional Afro-Cuban design, Black powder-coated Traditional hoops and hardware. The bongos boast a bright, iridescent orange finish, 7" & 9" Remo Fiberskyn heads and adorned with a custom designed Erik Piza Signature Plate.

MODEL	DESCRIPTION
5200-FIR	Erik Piza Bongos, Iridescent Orange



## CUSTOM DELUXE BONGOS NEW SAHARA GOLD & TRANSPARENT PURPLE FINISH!

Available with Seamless Fiberglass or 2 ply, Asian Oak wood shells Featuring High-luster chrome hardware, Natural top grade Bison heads, and EasyPlay hoops. Multiple finishes and matching congas available.

MODEL	DESCRIPTION
4600*	7" & 8½" Bongos

\*Finishes: (Fiberglass) FR = Red Sparkle, FS = Silver Sparkle (Wood) NW = Natural Wood, DW = Dark Wood, BW = Blue Wood, BKS = Black Sparkle, PW = Transparent Purple, SG = Sahara Gold

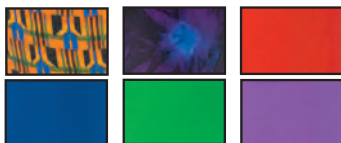


## FREESTYLE BONGOS

6" Tall Durable PVC shells, synthetic heads, protective rubber/non-slip bottoms, lightweight, always tuned, cleanable, weather-resistant and maintenance free.

MODEL	DESCRIPTION
TF2B-*	5" & 6" Bongos

\*Finishes:  
B = Blue, G = Green,  
P = Purple, R = Red,  
K = Kente, LZ = Lizard  
WP = WoodStock Purple



## PLAYER'S SERIES BONGOS

Two-ply wood shells with natural rawhide heads, Black powder coated rims and chrome tuning lugs. High quality construction at an entry-level price. Matching congas available.

MODEL	DESCRIPTION
2400N	6" & 7" Bongos
2600N	7" & 8½" Bongos



## SYNERGY DELUXE WOOD BONGOS COFFEE FADE FINISH

The Synergy wood bongo shells are made from environmentally-friendly, plantation Wood. They have 6" & 6-3/4" diameter Remo® synthetic heads, chrome hardware and feature a Rich, warm Coffee to Natural Fade Finish. Matching conga set also available.

MODEL	DESCRIPTION
2150-CF	Wood Bongos, Coffee Fade

**COMING  
SOON!**

Finishes:  
CF = Coffee Fade,  
N = Natural,  
PF = Purple Fade,  
WF = Wine Fade



## SYNERGY SYNTHETIC BONGOS

Rawhide heads. Black powder coated hardware. Produces high tonal ranges. ABS plastic construction. Traditional style hoops. Chrome tuning lugs. Matching congas available.

MODEL	DESCRIPTION
2100*	6" & 7" Bongos

\*Finishes:  
SB = Black, SR = Red, SW = White



## SYNERGY WOOD BONGOS

Asian Oak shells, natural rawhide heads with Black, powder coated hardware and 8 tuning lugs. Matching congas available.

MODEL	DESCRIPTION
2100*	6" & 6¾" Bongos

\*Finishes:  
AMB = Amber, BB = Bahama Blue,  
N = Natural, RR - Rio Red, TOB = Tobacco



## TRADITIONAL SERIES WOOD BONGOS

2-Ply plantation grown, Asian Oak shells. Natural rawhide heads with brushed chrome hardware. Matching congas available.

MODEL	DESCRIPTION
3900*	7" & 8½" Bongos

\*Finishes: D = Dark Wood,  
T = Natural Wood



## ELITE PRO BONGOS

2-ply Asian Oak shells, EasyPlay hoop, plated chrome hardware. Crimson Maple Fade or Natural Fade finish. Matching congas available.

MODEL	DESCRIPTION
3170CF	7" & 8½" Bongos, Crimson
3170NF	7" & 8½" Bongos, Natural





## DJEMBES

### COLORSOUND DJEMBES METALLICS & PASTELS

#### COLORSOUND DJEMBES

Ideal for music educators. Drums measure 12½" high and are made of a lightweight, synthetic material with a 7" synthetic head. Available in 7 unique Metallic Colors: **Red, Orange, Yellow, Green, Blue, Indigo and Violet.** Also available in Pastel Colors: **Blue, Green, Pink, Purple and Yellow.** Sold individually, Metallics also sold in set of 7.

MODEL	DESCRIPTION
TFCDJ-7MS	Set of 7 Metallic Djembes
TFCDJ-7MR	Metallic Red
TFCDJ-7MO	Metallic Orange
TFCDJ-7MY	Metallic Yellow
TFCDJ-7MG	Metallic Green
TFCDJ-7MB	Metallic Blue
TFCDJ-7MI	Metallic Indigo
TFCDJ-7MV	Metallic Violet
TFCDJ-7PB	Pastel Blue
TFCDJ-7PG	Pastel Green
TFCDJ-7PK	Pastel Pink
TFCDJ-7PR	Pastel Purple
TFCDJ-7PY	Pastel Yellow



PASTELS!



**GREAT FOR  
BEGINNERS!**



METALLICS!



# DJEMBES

## FREESTYLE DJEMBES MECHANICAL & ROPE TUNED

### FREESTYLE MECHANICALLY TUNED DJEMBES

Features new extended collar hoop for greater tuning range. Equipped with low mass tuning system. 14" drums have a lightweight and extremely durable PVC shell, and include matching padded bag with fully adjustable shoulder straps & side pocket. Available in: **Bali Red (RP)**, **Fiesta (F)**, **Antique Silver (AS)**, **African Sunset (AFS)**, **Black Mamba (BM)** and **Kente (K)**. \*\* Add a (B) after the color choice for 14" with Bag. (example: SFDMX-14KB)

MODEL	DESCRIPTION
SFDMX-9*	9" Head, 16½" Tall
SFDMX-10*	10" Head, 20" Tall
SFDMX-12*	12" Head, 24" Tall
SFDMX-14**	14" Head, 26" Tall with Bag



BALI RED



ANTIQUE SILVER



KENTE



WOODSTOCK PURPLE



AFRICAN SUNSET



AFRICAN SUNSET



BLACK MAMBA



FIESTA



### FREESTYLE ROPE TUNED DJEMBES

These djembes have a lightweight and extremely durable PVC shell, and Hand selected goatskin head. Protective rubber/ non-slip bottom. Patented. Low stretch Alpine rope with braided cores produces a rich bass tone, with sharp, piercing rim tones and ensures stable tuning. Available in: **Bali Red (RP)**, **Fiesta (F)**, **Antique Silver (AS)**, **African Sunset (AFS)**, **Black Mamba (BM)**, **Kente (K)** and **Woodstock Purple (WP)**. \*\* Add a (B) after the color choice for 14" with Bag. (example: SFDJ-14KB)

MODEL	DESCRIPTION
SFDJ-7*	7" Head, 12" Tall
SFDJ-9*	9" Head, 16½" Tall
SFDJ-10*	10" Head, 20" Tall
SFDJ-12*	12" Head, 24" Tall
SFDJ-14**	14" Head, 26" Tall with bag



BLACK MAMBA

# DJEMBES

**BEST  
SELLERS!**

## FREESTYLE II DJEMBES

### MECHANICALLY TUNED

All weather synthetic head eliminates stretching, drying or losing pitch. Higher, crisp slaps & deeper bass tones. Lightweight and extremely durable PVC shell with a Protective nonslip rubber bottom. 14" djembe includes a carrying bag. Sizes: 9" head, 16-1/2" tall, 10" head, 20" tall 12" head, 24" tall and 14" head, 26" tall.

MODEL	DESCRIPTION
<b>TF2DM-9*</b>	Mechanical Djembe 9"
<b>TF2DM-10*</b>	Mechanical Djembe 10"
<b>TF2DM-12*</b>	Mechanical Djembe 12"
<b>TF2DM-14**</b>	Mechanical Djembe 14" with Bag

\*Available Colors:

AFS = African Sunset, RM = Red Mask, S = Spirit, SC = Spun Copper, T = Thinker

\*\* Add a (B) after the color choice for 14" with Bag. (example: TF2DJ-14SB).



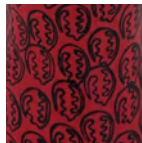
AFRICAN SUNSET



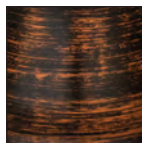
AFRICAN SUNSET



THINKER



RED MASK



SPUN COPPER

### ROPE TUNED

All weather synthetic head eliminates stretching, drying or losing pitch. Higher, crisp slaps and deeper bass tones. Lightweight and extremely durable PVC shell. Protective nonslip rubber bottom. 14" djembe includes a carrying bag. Patented. Increased rope runners allow for improved tuning.

MODEL	DESCRIPTION
<b>TF2DJ-7</b>	Rope Tuned Djembe 7"
<b>TF2DJ-9*</b>	Rope Tuned Djembe 9"
<b>TF2DJ-10*</b>	Rope Tuned Djembe 10"
<b>TF2DJ-12*</b>	Rope Tuned Djembe 12"
<b>TF2DJ-14**</b>	Rope Tuned Djembe 14" with Bag

\*Available Colors:

AFS = African Sunset, R = Red, S = Spirit, SC = Spun Copper, T = Thinker

\*\* Add a (B) after the color choice for 14" with Bag. (example: TF2DJ-14SB).



RED



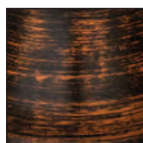
AFRICAN SUNSET



SPIRIT



THINKER



SPUN COPPER

### 14" DJEMBE BAGS



# DJEMBES

## FREESTYLE LIGHTWEIGHT DJEMBE SERIES

All-synthetic, lightweight, and extremely durable PVC shell with head allows this drum to be one of the lightest drums in the world. Improved heads are now stronger than ever, pre-tuned, and permanently attached. Shoulder strap with drawstring carrying bag included.

MODEL	DESCRIPTION
SFDL-9*	9" Head, 16" Tall
SFDL-10*	10" Head, 19" Tall
SFDL-12*	12" Head, 23" Tall

\*Available Colors:  
African Dance (AD), Earth Tone (EB), Rasta (RB), Woodstock Purple (WP)

**NEW  
FINISHES!**



RASTA



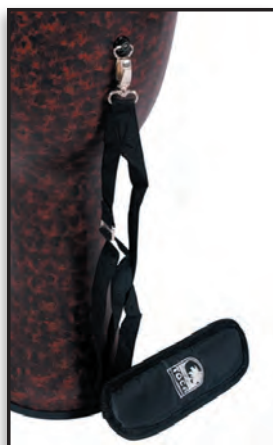
EARTH TONE



WOODSTOCK  
PURPLE



AFRICAN DANCE



**Removable,  
Adjustable  
Shoulder Strap!**

**IMPROVED,  
STRONGER HEADS!**



**Full Color Graphics on Heads!**

*Top view of Head Graphics. (Heads are not separate)*

## DJEMBES

### STREET SERIES DJEMBES

Hand carved from one piece of environmentally-friendly, plantation grown Mahogany - Kiln dried with 20 coats of teak oil to protect & preserve the wood. Hand selected goatskin heads, with authentic rope tuning.

Available Sizes:

Small (approx. 8" head & 16" tall),

Medium (approx. 10" head & 20" tall),

Large (approx. 12" head & 24" tall)

MODEL	DESCRIPTION
<b>TSSD-J-S*</b>	8" Djembe, Small
<b>TSSD-J-M*</b>	10" Djembe, Medium
<b>TSSD-J-L*</b>	12" Djembe, Large

\*Available Finishes:

Brown & Black Stain (B), Black Onyx (BO),  
Cherry Stain (C), Cascade (CD), Diamond (D)

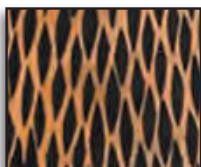


DIAMOND

### Hand Carved Details!



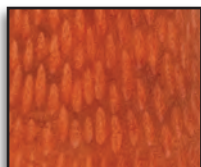
DIAMOND



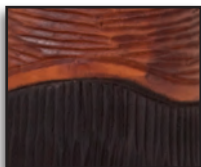
CASCADE



BLACK ONYX



CHERRY STAIN



BROWN/BLACK STAIN



BROWN/BLACK STAIN



CHERRY STAIN



BLACK ONYX



# DJEMBES

## ORIGINS SERIES HAND-CARVED DJEMBES

Carved from a single piece of environmentally-friendly plantation grown mahogany. Lathe turned for uniform thickness. Bowl interior features lathe grooves and rough-surfaced carvings to eliminate overtones. Hand selected goatskin heads.

MODEL	DESCRIPTION
<b>TODJ-7*</b>	7" Head, 12" Tall
<b>TODJ-8*</b>	8" Head, 16" Tall
<b>TODJ-10*</b>	10" Head, 20" Tall
<b>TODJ-12*</b>	12" Head, 24" Tall

\*Available Finishes: Celtic Knot (CK), Tribal Mask (TM), African Mask (AM), Earth Mother (EM), Lion = (LN)

## Hand Carved Details!



LION



EARTH MOTHER



CELTIC KNOT



TRIBAL MASK



AFRICAN MASK



AFRICAN MASK



CELTIC KNOT



TRIBAL MASK



EARTH MOTHER



LION



AFRICAN MASK

## ORIGINS DEEP BOWL HAND-CARVED BOUGARABOU

Hand-carved from a solid piece of environmentally-friendly plantation grown mahogany. Beautiful, authentic African Mask design. Natural Calf-skin head. Elongated bowl creates deep, resonant bass tones. 12" x 24".

MODEL	DESCRIPTION
<b>TBD-12AM</b>	Bougarabou 12" x 24"

## DJEMBES

### SYNERGY ROPE TUNED MINI DJEMBES

These mini djembes feature a choice of Hand carved wood designs or Hand painted designs that are beautifully finished. Goatskin heads and the same high quality HTB low-stretch rope now used on all Toca Djembes.

MODEL	DESCRIPTION
<b>SDMINI*</b>	4" Head, 7" Tall

\*Available Finishes:

Painted Tribal (No Suffix),  
Diamond (D), Painted Gecko (PG), Black  
Onyx (BO), Brown & Black Stain (B),  
Cherry Stain (CS)



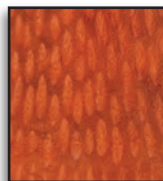
PAINTED GECKO



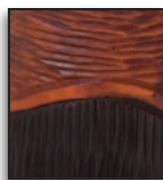
BLACK ONYX



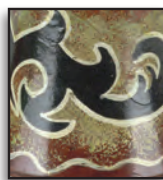
DIAMOND



CHERRY STAIN



BROWN/BLACK STAIN



TRIBAL

### MASTER SERIES DJEMBES WITH BAG

Beautifully hand carved solid wood  
djembe. Carved from the highest grade,  
plantation grown mahogany. Top-grade  
Goatskin Head. Low Stretch Alpine rope.  
Includes padded bag.

MODEL	DESCRIPTION
<b>TMDJ-12NB</b>	12" Head, 24" Tall
<b>TMDJ-13NB</b>	13" Head, 26" Tall



PADDED DJEMBE BAG FOR  
MASTER SERIES AND CARVED  
BLACK MAMBA DJEMBES

### CARVED- BLACK MAMBA ROPE TUNED DJEMBE WITH BAG

Low-stretch Alpine rope with braided cores.  
10", 12" and 13" djembes include djembe  
hat & bag. Heavy-duty padded Pro Bag and  
djembe hat protects the drum. Features  
adjustable shoulder straps, hip belt and  
exterior pouches.

MODEL	DESCRIPTION
<b>ABMD-7</b>	7" Head, 12" Tall
<b>ABMD-8</b>	8" Head, 16" Tall
<b>ABMD-10</b>	10" Head, 20" Tall
<b>ABMD-12</b>	12" Head, 24" Tall
<b>ABMD-13</b>	13" Head, 26" Tall

## DJEMBE ACCESSORIES

### DJEMBE KESSING

Made of lightweight aluminum. Snuggly fits between djembe ropes to give player added sounds.

MODEL	DESCRIPTION
T-DKS	Kessing Sound accessory



### DJEMBE HATS

Padded hat fits snug on top of djembe for added protection. Equipped with silver lining for added heat protection. Black cloth finish with Toca logo.

MODEL	DESCRIPTION
TDHAT-10	10" Djembe Hat
TDHAT-12	12" Djembe Hat
TDHAT-13	13" Djembe Hat



### DJEMBE BAG WITH SHOULDER HARNESS PACK

Padded Bag for protection. Fully adjustable shoulder harness and side pocket. Harness is padded and features one touch clips. Bag and harness are sold together.

MODEL	DESCRIPTION
TDBSK-10B	10"
TDBSK-12B	12"
TDBSK-13B	13"
TDBSK-14B	14"



### PRO DJEMBE PADDED BAG

Bag features adjustable shoulder straps, hip belt and exterior pouches.

MODEL	DESCRIPTION
T-DBG10	10" Djembe Bag
T-DBG12	12" Djembe Bag
T-DBG13	13" Djembe Bag



## NESTING DRUMS

### FREESTYLE II NESTING DJEMBS

Toca nesting djembes are unique, PVC drums similar to our freestyle djembes with an added feature; the drum heads - made from reinforced composite synthetic material for added durability, which can be removed & be played like a frame drum! Drums easily "nest" inside each other - ideal for storage and/or travel. The perfect drums for interactive drumming. Featuring three sizes: 8", 10", or 12" Heads. These drums are lightweight, always tuned, cleanable, nesting, space saving, weather-resistant and maintenance free.

MODEL	DESCRIPTION
TF2ND-8*	8" Head, PVC Nesting Djembe
TF2ND-10*	10" Head, PVC Nesting Djembe
TF2ND-12*	12" Head, PVC Nesting Djembe
TF2ND-3PC*	Set of 3 Nesting Djembes (8", 10", 12")

\*Available Finishes: Kente (K) and Woodstock Purple (WP)



### FREESTYLE II NESTING TOM-TOM DRUMS

The Toca Nesting Tom-Toms are unique, PVC drums that sound similar to regular Tom-Toms with an added feature; the drum heads - which are made from reinforced composite synthetic material for added durability, can be removed and be played like a frame drum! Drums easily "nest" inside each other - ideal for storage and/or travel. The perfect drums for interactive drumming. Featuring three sizes: 12", 14", or 16" Heads. These drums are lightweight, always tuned, cleanable, nesting, space saving, weather-resistant and maintenance free. Mallets included.

MODEL	DESCRIPTION
TF2NT-12*	12" Head, PVC Tom-Tom Drum with matching Mallets
TF2NT-14*	14" Head, PVC Tom-Tom Drum with matching Mallets
TF2NT-16*	16" Head, PVC Tom-Tom Drum with matching Mallets
TF2NT-3PC*	Set of 3 Tom-Toms w/Mallets (12", 14", 16")
T-NTM*	Tom Tom mallets - 1 pair

\*Available Finishes: Kente (K) and Woodstock Purple (WP)





## NESTING DRUMS

### FREESTYLE II NESTING DJUN DJUNS

Unique, PVC drums similar to our freestyle djembes with an added feature; the drum heads - made from reinforced composite synthetic material for added durability, which can be removed & played like a frame drum! Drums easily "nest" inside each other - ideal for storage and/or travel. The perfect drums for interactive drumming. Available in three sizes: Small - 19"H with 12" Heads, Medium - 20"H with 14" Heads, or Large - 20.5" H with 16" Heads. These drums are lightweight, always tuned, cleanable, nesting, space saving, weather-resistant and maintenance free. Includes Matching Mallets, full back Harness Strap for playing while standing, marching and carrying ease.

MODEL	DESCRIPTION
TF2NDD-12*	Small, 12" Head, PVC Nesting Djun Djun
TF2NDD-14*	Medium, 14" Head, PVC Nesting Djun Djun
TF2NDD-16*	Large, 16" Head, PVC Nesting Djun Djun
TF2NDD-3PC*	Set of 3 Nesting Djun Djuns (12", 14", 16")

\*Available Finishes:

Kente (K)

Woodstock Purple (WP)



## WORLD PERCUSSION

### FREESTYLE II TOM TOM DRUMS

The Freestyle II PVC Tom drums are 8" tall with a 9.5" synthetic head - made from reinforced composite material for added durability. The perfect drums for interactive drumming. These drums are lightweight, always tuned, cleanable, weather-resistant and maintenance free. Includes Matching Mallets.

MODEL	DESCRIPTION
TF2T-*	9.5" PVC Tom Tom Drum

\*Available Finishes: Kente (K), Woodstock Purple (WP), Blue (B), Green (G), Purple (P), Red (R), Lizard (LZ)

**NEW  
FINISH!**



# WORLD PERCUSSION

## JAMAL DRUM SERIES

Designed in collaboration with doumbek Master Jamal Mohamed, The New Jamal Drum Series features 12" Mazar Drums with or without jingles, a 10" Riq (A Traditional, Middle-Eastern instrument similar to a tambourine), and three new Frame Drums with tuning system, adorned with Jamal's signature logo - sold individually or in a set of three. Constructed of Durable, Lightweight PVC with a Dark Red painted finish.

MODEL	DESCRIPTION
<b>JMAZ-12</b>	12" Mazar Drum, Red PVC - no Jingles
<b>JMAZ-J12</b>	12" Mazar Drum, Red PVC - with Jingles
<b>JRIQ-10</b>	10" Riq, Red PVC with jingles
<b>JFD-10</b>	10" Jamal Series Tunable Frame Drum, Red PVC
<b>JFD-12</b>	12" Jamal Series Tunable Frame Drum, Red PVC
<b>JFD-14</b>	14" Jamal Series Tunable Frame Drum, Red PVC
<b>JFD-3PC</b>	3-Pc Jamal Series Tunable Frame Drums, Red PVC, (10", 12", & 14")



RIQ



MAZAR DRUMS WITH AND WITHOUT JINGLES


 TUNABLE  
FRAME DRUMS

## JAMAL SERIES DOUMBKEK

Designed in collaboration with doumbek Master Jamal Mohamed. Extremely durable, precision balanced shells. Toca's unique designs allows for deep douns & high teks. Innovative fiberglass body. Pretuned, (non replaceable). Hand painted.



MODEL	DESCRIPTION
<b>SJDKF-9S</b>	9.5"x16" Sm
<b>SJDKF-10S</b>	10"x18.25" Med
<b>SJDKF-12S</b>	11"x20.75" Lrg

**NEW!**



## TUNABLE PANDIEROS WITH PLATINELLAS

A quintessential Brazilian percussion instrument gaining popularity beyond its traditional roots, and becoming the new must have for percussionists. The new, sturdy pandieros are affordable enough that you can add some authentic Brazilian spice to your music without breaking the bank.

Toca's New 10" & 12" Pandieros feature synthetic heads, 2-PLY Siam Oak Shells, Tunable Hardware, and Chrome plated Steel Platinellas (Jingles). Tuning wrench Included.

## JAMAL SERIES DOUMBKEK BAG

Black padded nylon bag protects drum. Zippered top, external pocket, lined bag with shoulder strap. Can hold doumbeks up to 10" width and 16" length. Features embroidered logo.



MODEL	DESCRIPTION
<b>T-JDBG</b>	Padded Doumbek Bag

MODEL	DESCRIPTION
<b>TPD10</b>	10" Pandiero, w/ Chrome Plated Steel platinellas
<b>TPD12</b>	12" Pandiero, w/ Chrome Plated Steel platinellas

# WORLD PERCUSSION

## 12" FREESTYLE ASHIKO, KENTE FINISH

Ideal for Educational market, Drum circles and Health and Wellness. Sound Chamber allows for drum to resonate while playing seated. Conical shaped drum. All Synthetic Shell equipped with synthetic head. Kente finish.

MODEL	DESCRIPTION
<b>TFA-12MK</b>	Mech. tuned
<b>TFA-12RK</b>	Rope tuned



## FREESTYLE KLONG YAO DRUM

This drum was designed after the traditional Thai drum. Its goblet shape produces deep bass tones and well-balanced high tones. It is traditionally used for ceremonies, festivals and drum circles. Equipped with a 12" synthetic head – it will not stretch or lose its pitch. Fully adjustable padded shoulder strap. Low-stretch Alpine rope with braided cores. Synthetic shell with a red marble finish.

MODEL	DESCRIPTION
<b>SFKO-12R</b>	12" Head, 31 3/4" H



## FLEX DRUM WITH STRAP

The Toca "Flex" Drum is a unique, PVC drum that sounds similar to a djembe with an added feature; the drum head can be removed and be played like a frame drum. They are also stackable making them ideal for storage and/or travel. It is the perfect drum for interactive drumming. Lightweight. Always Tuned. Cleanable. Stackable and Space Saving. Weather-proof and Maintenance Free.

MODEL	DESCRIPTION
<b>TFLEX-JR*</b>	10" Head, 18" Tall
<b>TFLEX-11*</b>	11 3/4" Head, 24" Tall
<b>TFLEX-3*</b>	11 3/4" Head, 24" Tall - 3Pc Set



\*Colors: Kente (K) and Grey (G)

## FREESTYLE DOUMBES

The mechanically tuned Doumbes have a fiberglass rim with 8 tuning screws. Available in two finishes: Aztec Blue (AB) or African Dance (AD). The pretuned Doumbek is only available in Bali Red (RP).

MODEL	DESCRIPTION
<b>SFMTDK-9AB</b>	9" Head, 18" Tall, Aztec Blue
<b>SFMTDK-9AD</b>	9" Head, 18" Tall, African Dance
<b>SFDK-9RP</b>	9" Head, 18" Tall, (Pretuned) Bali Red



BLUE AZTEC



AFRICAN DANCE



BALI RED

# WORLD PERCUSSION

## FREESTYLE II DOUMBES - 6"

10" tall PVC shells with 6" synthetic heads. Easy to play and maintain. Lightweight & durable. Great for drum circles, therapy, and players of all ages. Available in: Kente (K), Woodstock Purple (WP), Red (R), Green (G), Blue (B), Purple (P).

MODEL	DESCRIPTION
<b>TF2DK-6*</b>	10" Tall Freestyle II PVC Doumbek, 6" Head

Available in: Kente (K), Woodstock Purple (WP), Red (R), Green (G), Blue (B), Blue Violet (BV).



**NEW  
FINISH!**

## BATA DRUMS

Long shell section produces unmatched bottom end. Shorter shell section enhances high end tones. Traditional, Bright Red finish. Matched bison heads. Three sizes available.

MODEL	DESCRIPTION
<b>3308</b>	Oconcolo - Sm., 5" & 7" Heads, 22"H
<b>3309</b>	Omele - Med., 5½" & 8½" Heads, 26"H
<b>3310</b>	Iya - Lg., 7" & 12" Heads, 29"H



## FREESTYLE DJUN DJUNS WITH MALLETS

Outstanding melody, design and various authentic African tone. Drum body is constructed of synthetic material 3 sizes, sold separately. Real calf skin heads produce heavy tones and eliminate ringing overtones. Mallets included.

MODEL	DESCRIPTION
<b>SFDD-10AM</b>	10" Kenkeni - High Tone
<b>SFDD-12AM</b>	12" Sanghan - Mid-Range Tone
<b>SFDD-15AM</b>	15" Dundunba - Deep Base Tone



## FREESTYLE TALKING DRUM WITH BEATER

Drum changes in pitch by squeezing and releasing the cords while playing. Extremely lightweight and durable synthetic shell. Authentic goatskin heads. Beater included. Finished in African Mask design.

MODEL	DESCRIPTION
<b>T-TLKD</b>	7" Heads, 16" Tall

## PROFESSIONAL CUICA

Lightweight aluminum shell with Black powder coated hardware. Natural goatskin head. Shoulder strap and tuning wrench included.

MODEL	DESCRIPTION
<b>T2548</b>	10" Head, 11" Tall



## PROFESSIONAL TAMBORA

Two-ply Asian Oak wood. Low profile. Traditional rims & top quality bison heads. Natural finish. Shoulder strap & beater included.

MODEL	DESCRIPTION
<b>TTAM-N</b>	11" Heads, 14" Tall





# TIMBALES

## ELITE SERIES TIMBALES

14" & 15" Timbales. Heavy-duty single braced adjustable stand. Fully adjustable cowbell post. (cowbells sold separately).

MODEL

T-315



## PLAYER'S SERIES TIMBALES

13" & 14" Timbales. Double braced tilting stand. Improved cowbell bracket. Improved cascara sound. (cowbells sold separately).

MODEL

T-PT1314



Toca Endorser:  
Tito Rodriguez Jr.  
Photo By:  
Joyce Michel



## PRO LINE TIMBALES

14" & 15" Timbales. Ultimate cascara sound. Wing nut is lower so there's no cross sticking interference. Fully adjustable tripod stand. Fully adjustable cowbell mounting bracket. (cowbells sold separately).

MODEL

TPT1415-BC



## CUSTOM DELUXE TIMBALES

14" and 15" chrome plated steel shells produce a classic cascara and are topped with Powder Coated Antique Bronze finished rims. Tuning bolts, lowered below the rim, reduce interference for easier rim shots and improved speed when moving from one drum to the other. Comes with a fully adjustable cowbell mount and mounting bracket. The mounting bracket wing nut has been placed below the rims, eliminating cross-sticking interference. Complete with a fully adjustable tripod stand.

MODEL

DESCRIPTION

T1417-AB

14" &amp; 15" Custom Deluxe Timbales, Antique Bronze



## ERIC VELEZ SIGNATURE SERIES TIMBALES

Ultimate cascara sound. Lower wing nut gets rid of cross sticking interference. Includes fully adjustable tripod stand. Tuning rod bolts are lower than rim - allowing for crisp rim shots without interference. Sleek, Black mirror chrome hardware with Gun Metal Glitter Finish gives it that old-school look with a modern flair that's sure to attract attention! Fully adjustable cowbell mounting bracket. (cowbells sold separately). Matching Congas and Bongos also available. (See pages 4 & 6)

MODEL

DESCRIPTION

T1415-EVGG

14" &amp; 15" Timbales

# CAJONS

## BASS REFLEX CAJONS

### EXTENDED RANGE CAJON - TOCA LOGO

This cajon has larger dimensions, offering a broad tonal spectrum and dynamic range. The patented bass reflex design produces enhanced bass response. This model is equipped with Adjustable Flamenco-style snares and finished with an Eye-catching Toca Logo design.

MODEL	DESCRIPTION
<b>TCAJER-TL</b>	Bass Reflex Cajon - Toca Logo Design



The new Toca Bass Reflex Cajons incorporate a patented, built-in resonant system. Following the same principals widely used on loudspeakers, each cajon in this group features an internal tube tuned to the cabinet of each cajon. This bass reflex design enhances and extends the low-end response of the cajon and increases overall volume.

### EXTENDED RANGE CAJON - TIGER MASK

The larger dimensions of this cajon offers a bigger tonal spectrum and broader dynamic range than a standard sized cajon. Bass response is even further enhanced & extended by Toca's bass reflex design. Flamenco-style snares are adjustable. 19.5" x 14" x 11.5".

MODEL	DESCRIPTION
<b>TCAJER-TM</b>	Extended Range Cajon, 8-string, Tiger Mask



EXTENDED RANGE  
CAJON

### FLAMENCO CAJON - MAHOGANY

A marriage of two great traditions - Spanish Flamenco and Afro-Peruvian music. This cajon reflects the elegant simplicity of the fixed-snare flamenco cajon.

MODEL	DESCRIPTION
<b>TCAJF-M</b>	Flamenco Cajon, Mahogany



FLAMENCO  
CAJON

### CORNER ACCENT CAJON

A new joinery technique yields this attractive, sturdy flamenco cajon. Made from plywood with adjustable flamenco-style snares and Toca's bass reflex system, this cajon sounds as good as it looks!

MODEL	DESCRIPTION
<b>TCAJCA-M</b>	Corner Accent Cajon, Natural/Dark Walnut



CORNER  
ACCENT CAJON

### THE WORKHORSE CAJON

Solid, dependable, durable. Toca Workhorse Cajons get the job done with a surprising touch of grace. Sturdy MDF body has greater density & less give than plywood. Its construction, paired with Toca's bass reflex design, yields a refined timbre with depth, clarity & dynamic range that rivals other cajons that cost twice as much.

MODEL	DESCRIPTION
<b>TCAJWH-DW</b>	Workhorse Cajon, Dark Walnut
<b>TCAJWH-M</b>	Workhorse Cajon, Mahogany



THE WORKHORSE  
CAJON (WALNUT)

# CAJONS

## COLORSOUND WOOD CAJON

All wood construction with Para wood front plate. Two internal snare wires for crisp sound. 17" H x 11" W x 11" D. Great for beginners.

Available Colors: RD = Red, BL = Blue, GN = Green, WH = White, PK = Pink

MODEL  
**TCCJ-\*** Colorsound Cajon

## WOOD CAJON WITH ASH FRONT PLATE

North American Ash wood front plate. Siam oak body. Fixed internal snares. Padded seating surface. 20½" H, 12½" W, 13" D

MODEL  
**TCAJ-ASH**

## PLAYER'S SERIES WOOD CAJON

All wood construction & internal snare wires. Beginner cajon with professional sound. Rubber feet. 11½" W, 17½" H, 11½" D.

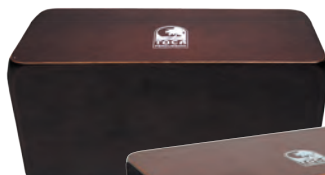
MODEL  
**TCAJ-PN**



## BONGO FLIP-CAJON

A multi-purpose, multi-sided instrument. It's a bongo cajon that flips over to a snare cajon. Featuring fixed internal snares, and a lap strap for secure playing. Size: 14-1/2" X 8" X 6-1/2"

MODEL DESCRIPTION  
**T-BFC** Bongo Flip-Cajon

**NEW!**

## BASS REFLEX BONGO CAJON

Sturdy Mahogany plywood shell and musical tapa. The sound chamber is divided in two, the macho and hembra chambers. The macho chamber is sealed which raises pitch, improves slap response and adds overtones for more cut. Using the same bass reflex technology found in our most popular cajons, the hembra chamber is closed and ported. The port is tuned precisely to extend frequency range and increase projection.

MODEL DESCRIPTION  
**TBGCAJ** Bass Reflex Bongo Cajon

# CAJONS

## JR. CAJONS

A great way to get kids started in music! The Maple tapa (playing surface) is slanted for easy playing. The body features bright colors. Measuring at 13 3/4" tall, This is the perfect size for early childhood learning.

MODEL	DESCRIPTION
<b>TSFSC-*</b>	Jr. Cajon, Wood

\*Available Finishes: Red (RD), Blue (BL), Green (GN)



## TRIPLE CONGA CAJON W/ STAND

Wood top construction. Fiberglass bowl shape. Creates 3 sounds similar to three conga drums – high, mid, low. Height adjustable stand included. Ideal for acoustic gigs.

MODEL	DESCRIPTION
<b>T-TCC</b>	Triple Conga Cajon with Stand



TRIPLE  
CONGA CAJON



SNARE  
CONGA CAJON

## SNARE CONGA CAJON

Fiberglass bowl with thin, responsive tone wood layer, split into two chambers. Large chamber produces deep conga tone. Small chamber with snare gives distinct treble sound of a Cajon's front plate. Great for tight setups. Sits in lightweight, height-adjustable stand and packs easily into padded carrying case.

MODEL	DESCRIPTION
<b>T-SCC</b>	Snare Conga Cajon

**NEW!**



# KICKBOXX

## KICKBOXX SUITCASE DRUM SET

The Kickboxx Suitcase is a drum set with a Kick, Snare and Tom, plus room for your favorite kick pedal. The Kickboxx acts as a carrying case for the entire set. Packed up, it's small enough to fit in most airline overhead compartments. It features a 14" Bass Drumhead, 10" snare (with throw-off), 10" tom, and 2 retractable accessory posts (1 in the front & 1 in the back). Additional accessories can be mounted by attaching accessory clamps to the handle.

MODEL	DESCRIPTION
<b>TKSDS</b>	Kickboxx Suitcase Drum Set

Add-ons: \*\*

<b>TAUX10</b>	10" Auxiliary Drum w/Mount (for 3/8" Post)
<b>TAUX10-SN</b>	10" Auxiliary Drum with Snare & Mount (for 3/8" Post)

\*\* The TAUX10 and TAUX10SN are included with the purchase of the TKSDS. Replacements can also be purchased separately.





## DRUMSET ADD-ONS

### ACRYLIC MINI TIMBALES

Excellent add-on to any existing drumset or percussion set-ups. Two sizes, 6" and 8" both sold separately, mounts to any 3/8" rod. Delivers excellent crisp highs. Rubber Bottom.



MODEL	DESCRIPTION
T-408AS	8" Black Smoke
T-406AS	6" Black Smoke

### QUICK CHANGE MOUNT

Innovative steel clamp that transforms from a cymbal holder to a percussion rack.



MODEL	DESCRIPTION
T-QCM	Quick Change Mount



### JINGLE SNARE

Tambourine and snare combination. Wood construction. Gibraltar dual post mount. Double-row nickel plated jingles produce bright sounds. Cowbell not included.

MODEL	DESCRIPTION
TD-JSPKG1	10" Head



### JINGLE-HIT TAMBOURINES

6-ply wood construction. Rubber playing surface can be played by drumstick or hand. Gibraltar dual post mount. Double-row nickel plated jingles that produce bright sounds. Cowbell not included.

MODEL	DESCRIPTION
TD-JHMT1	6" Marine Pearl



### HI-HAT "HIT-ZONE" TAMBOURINE

Rubber "Hit Zones" allow the drummer to create a different strike with a drumstick while keeping rhythm on the hi-hat. 10 rows of nickel plated jingles create bright sounds ideal for any music application. 6 3/4" black powder coated metal round frame.

MODEL	DESCRIPTION
T-HH2T	



### TAMBOURINE WITH EASY PLACE MOUNT

Unique bracket easily converts from mounted to handheld in seconds. Plastic edge for added stick protection. Nickel plated jingles. Black, ABS plastic.

MODEL	DESCRIPTION
T-2603	



### 3/2 CLAVE BLOCK

Extremely durable. Loud projection. Ideal for marching bands, drummers and percussionists.

MODEL	DESCRIPTION
T32BY	

# FRAME DRUMS /TAMBOURINES

## FRAME DRUMS

Sold individually and in sets of 3 and 5. Sizes 6", 8", 10", 12" and 14". 3-Pk consists of 8", 10", 12". The 5-Pk consists of 6", 8", 10", 12" and 14". Ideal for early childhood education 3 pack and 5 pack come with padded carrying bag.

MODEL	DESCRIPTION
<b>TFD-3PK</b>	3 pk with bag
<b>TFD-5PK</b>	5 pk with bag
<b>TFD-6</b>	6" drum
<b>TFD-8</b>	8" drum
<b>TFD-10</b>	10" drum
<b>TFD-12</b>	12" drum
<b>TFD-14</b>	14" drum



Check Out The Jamal Series  
Frame Drums on Pg 18.

## COLORSOUND TAMBOURINES

A spectrum of 10" painted tambourines that fit any musician's style. Lightweight exotic Acacia hardwood. Nickel plated and Brass plated double row jingles. Jingle combination balances sound, projecting dry and lively sounds. Available in Blue (BL), Green (GN), Pink (PK), Red (RD), Black (BK) and White (WH).

MODEL
<b>TCT10*</b>

## BEST SELLERS!



## ACACIA TAMBOURINES

Acacia hardwood. Brass jingles for dry sound. Nickel jingles for lively sounds. Combo jingles produce a balanced sound. Ergonomical handle.

MODEL	DESCRIPTION
<b>T1010-A</b>	10" 8 Double Row Nickel Jingles
<b>T1010-AB</b>	10" 8 Double Row Brass Jingles
<b>T1010-ABC</b>	10" 8 Double Row Nickel/Brass Jingles



## HALF MOON BLACK TAMBOURINE

8 rows of double nickel plated jingles. Durable plastic construction. Ideal for live performances.

MODEL
<b>T-2602</b>



## SINGLE ROW TAMBOURINE

Extremely articulate, perfect for recording or gigging. Exotic Acacia hardwood & 8 rows of single Nickel/Brass combo jingles produce a balanced sound. Dark wood satin matte finish. Ergonomically tapered handle.

MODEL
<b>T1010D</b>



## LIGHTWEIGHT TAMBOURINE

Lightweight and comfortable feel. 10" Aluminum Frame with 2 rows of double, nickel plated jingles. Great for all styles of music.

MODEL	DESCRIPTION
<b>T2502</b>	10" Lightweight Tambourine

## SUPERTONE TAMBOURINE

10" PVC Shell Tambourine. 8 rows of double nickel plated jingles. Lightweight and extremely durable.

MODEL
<b>T-2500</b>



## PLAYER'S SERIES WOOD TAMBOURINES

Wooden frame with nickel jingles and optional pre-stretched natural skin heads

MODEL	DESCRIPTION
<b>T1075</b>	7 1/2" Wood Tambourine, Single Row
<b>T1090</b>	9" Wood Tambourine, Double Row
<b>T1010</b>	10" Wood Tambourine, Double Row
<b>T1075H</b>	7 1/2" w/Head, Single Row
<b>T1090H</b>	9" w/Head, Double Row
<b>T1010H</b>	10" w/Head, Double Row



# COWBELLS



## PRO LINE COWBELLS

State-of-the-art hammering process. Bells deliver excellent tones and sustain. Tight Grip Mount System, a unique mounting system that allows the bell to be pivoted for multiple placement variations and set-ups. Black Copper.

MODEL	DESCRIPTION
TPC-1BC	High Rut
TPC-2BC	Low Rut
TPC-4BC	Groove Bell
TPC-5BC	Mega Bell
TPC-6BC	XXL Bell



## PRO LINE HYBRID HANDHELD COWBELL

Unique Handheld Hybrid Bell has dual surfaces – hammered and flat.

MODEL	DESCRIPTION
TPC-3BL	Blk Mirror, High Pitch



## HANDHELD AGOGO BELLS

Crafted from premium steel. Variety of different tones and sounds. Handheld. Chrome finish.

MODEL	DESCRIPTION
4330T	Chrome

## NUYORICAN - ERIC VELEZ SIGNATURE COWBELLS

Island Salsa... New York style.

Designed in conjunction with renowned percussionist, Eric Velez, to compliment his signature series timbales. The Nuyorican bells fuse the sounds of Puerto Rican and New York percussion scenes. Whether you play Latin Pop, Modern Salsa or just want to add a Latin flair to your sound, these bells are just right for the job. Steel bells with Black Mirror, Gun Metal finish.

**4925-NB** 5" Cha-Cha Bell, 3-3/4" mouth, Gun Metal Finish

**4927-NB** 7" Mambo Bell, 5 3/4" mouth, Gun Metal Finish



## FUSION BELLS

Crafted from premium steel. Three different sized cowbells attached together. Three distinct sounds. White powder coat finish.

MODEL
4354-T

## CONTEMPORARY BELLS

Improved full-side seam weld. White powder coat finish. Crafted from premium steel. Variety of different tones and sounds. Unique tone dampening process.

MODEL	DESCRIPTION
4424-T	Hi Cha Cha
4425-T	Low Cha Cha
4426-T	Bongo Bell
4427-T	Mambo Bell
4428-T	Timbale Bell



## COWBELL BEATER

Matte finished Maka hardwood with Ribbed handle. 2 surfaces. rubber and wood.

MODEL
T-DCB



**NEW!**



## PLAYER'S SERIES COWBELLS

Improved full-side seam weld. Black powder coat finish. Eyebolt assembly.

MODEL	DESCRIPTION
3325-T	5 3/4" Tall
3326-T	6-7/8" Tall



## DIDGERIDOOS



### BAMBOO DIDGERIDOO

Natural Bamboo didgeridoo with Melamine Doff finishing.

MODEL	DESCRIPTION
-------	-------------

<b>DIDG-PNAT</b>	
------------------	--



### BAMBOO DIDGERIDOOS

Hand crafted and hand painted. 47" long with wax mouth piece. Carry bag included. Finishes: Turtle, Kangaroo, Gecko.

MODEL	DESCRIPTION
<b>DIDG-PT</b>	Turtle (Bottom Photo)
<b>DIDG-PK</b>	Kangaroo (Middle Photo)
<b>DIDG-PG</b>	Gecko (Top photo)

### DURO DIDGERIDOOS

Lightweight synthetic construction. Extremely durable. Nice tonal qualities. 56" model's large horn produces optimal bass.

MODEL	DESCRIPTION
<b>DIDG-DUOSM</b>	48"
<b>DIDG-DUOLG</b>	51"
<b>DIDG-DOS</b>	49" Orange Swirl
<b>DIDG-DGSH</b>	56" Green Swirl

### CURVED DIDGERIDOOS

Hand painted, lightweight and durable synthetic shell. Curved design represents a traditional style didgeridoo.

Finishes: Sahara Gecko (CG), Tribal Sun (CTS).

MODEL	DESCRIPTION
<b>DIDG-(L)</b>	



### DIDGERIDOO DISPLAY STAND

MODEL	DESCRIPTION
<b>DIDG-ND5</b>	Holds 6 Didgeridoo

## SMALL HAND PERCUSSION

### COCONUT SHEKERE

Wood construction. Coconut Shell with small plastic beads.

MODEL	DESCRIPTION
<b>T-CSGB</b>	Plastic Beads



### PRO FIBERGLASS SHEKERS

Handmade durable fiberglass shells. Hand-strung beads. Protective rubber ring on mouth of the Shekere. Black or natural Gourd Finish

MODEL	DESCRIPTION
<b>T2151B</b>	Fiberglass, Black
<b>T2151G</b>	Fiberglass, Natural Gourd





# SMALL HAND PERCUSSION

## TOCA & PLAYERS SERIES ROUND WHITE PVC SHAKERS

Toca Shakers are ideal for studio work, Players Series shakers are great for Live performances. Full rounded sound, Durable plastic shell.

MODEL	DESCRIPTION
T2005	5" Long, Toca - Studio
T2008	8" Long, Toca - Studio
T3106	6" Long, Players Series - Live
T3108	8" Long, Players Series - Live
T3110	10" Long, Players Series - Live



## ALUMINUM SHAKERS SQUARE-WHITE

Square shape allows for unique shaker sound. Great for live performances.

MODEL	DESCRIPTION
T-2204	4" Long
T-2208	8" Long



## BAMBOO TUBE SHAKERS

Bamboo tube shakers with natural rawhide heads. The pitch can be altered by playing the shaker freely or by gently pressing on the heads.

MODEL	DESCRIPTION
T-BSS	Small
T-BSM	Medium
T-BSL	Large



## NATURAL SHAKERS

Designed in collaboration with studio percussionist Doug Hinrichs. Constructed of natural rawhide material with rawhide fill inside of the shaker. Ideal for studio recordings and unplugged performances. Create rhythmic patterns while playing both shakers in your hands.

MODEL	DESCRIPTION
T-NSP	4 1/2" & 6 1/2" Shakers



## ALUMINUM SHAKERS ROUND-BLACK

Three sizes. Ideal for studio and live performances. Soft well-balanced sound.

MODEL	DESCRIPTION
T2102	5" Long
T2100	8" Long
T2101	12" Long



## FREESTYLE II PVC SHAKERS

**NEW!**

Toca's New Freestyle II PVC Shakers have durable Synthetic Shells with brightly colored Finishes. Each Shaker produces different tones: Small (High/Light), Medium (Moderate), and Large (Heavy/Deep). Great sound effect for any player to have.

Finishes:

Kente (K),  
Woodstock Purple (WP),  
Bali Red (RP)



MODEL	DESCRIPTION
TF2S-S**	Small, PVC Shaker
TF2S-M**	Medium, PVC Shaker
TF2S-L**	Large, PVC Shaker

## ROUND WOOD SHAKER

6 inch round natural wood shaker.

MODEL	DESCRIPTION
T-2206	6" Long



## SYMPATIKA SHAKER

Round wood shakers connected with rope. Creates soft shaker sounds. Lightweight and durable. Create unlimited sounds. Equipped w/ Alpine low stretch rope.

MODEL	DESCRIPTION
TSS-N	

## EGG SHAKERS

Sold in a pack of 10. Unlimited rhythm sounds. Multiple color choices.

MODEL	DESCRIPTION
T2105	White
T-2104	Gel, Assorted
T-2106	Rainbow



## SMALL HAND PERCUSSION

### WOOD RATTLE ON STRING

Siam oak pods on string create waterfall-like sound effect. Eccentric sound effect ideal for Health and Wellness market.

MODEL

T-WRS



### WOOD RATTLE WITH HANDLE

Great add-on for any drummer and percussionist in acoustic setup or studio. Siam oak pods are individually tied by hand. Unique sound effect ideal for Health and Wellness market.

MODEL

T-WRH



### WOOD RATTLE FOR ANKLE/WRIST

Great add-on for anyone playing cajon, djembe, guitar and dancers. Elastic band securely fits onto any wrist or ankle. Ideal for Health and Wellness market.



MODEL

T-WRA

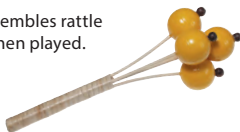


### RATTAN BALL SHAKER ON STICK

Soft sound. Resembles rattle snake sound when played.

MODEL

T-BRS



### SEED SHELL SHAKER

Natural seed pods. Unlimited musical sounds.

MODEL

T-SS



### CAXIXI

Closed basket with flat plastic bottom. Lively sounds.

MODEL DESCRIPTION

T2543 Small

T2544 Large

### PAINTED WOOD MARACAS

Hand made from selected hardwood. Well-balanced sound. Beautiful hand painted design on each maraca.

MODEL

T3132



### SUPERTONE MARACAS

Ideal for live performances. Plastic shell w/ wooden handle.

MODEL

T2110



### MARACAS

Create lively tones and rhythms. Durable plastic shell.

MODEL DESCRIPTION

T3130 Small Maracas

T3131 Large Maracas



T3131



### MINI COCONUT MARACAS

Coconut shell. Warm sound ideal for acoustic performances.

MODEL

T-MCM

### TWO TONE WOOD BLOCKS

Combination of high and low tones. Wood construction. Includes beater

MODEL

T-2111



### PLAYER'S SERIES WOOD BLOCKS

Made of hardwood. Mallet included.

MODEL DESCRIPTION

T-3505 Soprano

T-3506 Alto



# SMALL HAND PERCUSSION

## CASTANET MACHINE

Wood base construction. Ebony castanets. Equipped with mount.

MODEL  
T2300



## PRO CLAVES

Hand selected Paduak wood. Projects warm and lively sound when struck together. Great for studio and live applications. One clave features a sound chamber that allows you to adjust the pitch when struck together. 9" Long Clave. 7-3/8" Long Striker.

MODEL  
T3513



## PALM WOOD CLAVES

Made from hand selected Palm hardwood. Well-balanced sound, ideal for studio recording & live performances. 8" Long x 1-1/8" Wide.

MODEL  
T-2512P



## ROSEWOOD CLAVES

Made of durable Rosewood. Produces loud clave sound ideal for big bands.

MODEL  
T-2512



## PLAYER'S SERIES CLAVES

Hardwood construction. Finished in black stain. Ideal for beginners.

MODEL  
T3512



## WOOD RATCHET

Wood construction. Nice sound effect for any percussionist.

MODEL  
T-WR



## RATCHET

Ideal for any musical application. Loud response and durable.

MODEL  
T2520



## TOCALIMBA THUMB PIANOS

9 Steel plated keys. Small is constructed of solid natural Ashwood. Large is constructed of Asian Oak with a walnut matte finish. Large version has hollow body and features sound chambers and wah-wah effect.

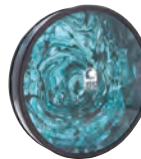
MODEL	DESCRIPTION
T-THPS	Small
T-THPL	Large



## COCONUT KALIMBA

Made of coconut shell 7 notes allows the player to create different sounds.

MODEL  
T-CK



## SURF DRUM

Play in a circular motion to create the sounds of waves crashing. Made of a highly durable synthetic shell. Synthetic heads on both sides. End cap allows you to adjust the inside fill. 13 1/4" Height x 14" Wide.

MODEL  
T-SURF



## BAMBOO GUIROS

Made of Bamboo. Three different guiro sound to choose from. Comes with striker.

MODEL	DESCRIPTION
T-MBG	Mini
T-SBG	Small
T-LBG	Large

## SYNTHETIC GUIRO

Fiberglass construction. Comes with beater. Beautifully high pitched for live performances. 13.5 x 5.5"

MODEL  
T2526W



## RIBBIT FROG

Resembles frog sound when played with striker. Wood - 5".

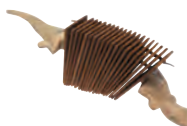
MODEL  
T-FROG



## GECKO WOODEN CLACKER

Made of wood construction. Nice addition for any percussionist. Part of the Sound Effects series. Features a wooden gecko design for each handle.

MODEL  
T-GC



# SMALL HAND PERCUSSION

## SLAPSTICK

Made of hardwood construction.  
Resembles a slap sound when struck together.

MODEL
T-2501



## RATTLER

Resembles rattle-like sound when struck

MODEL
T-2511



## FINGER CYMBALS

Well-balanced sound.  
Brass plated.

MODEL
T-2530



## TRIANGLES

Chrome plated, with beater.  
Lively sustains.

MODEL	DESCRIPTION
T2509	6" Bossa
T2508	10" Samba
T-TRI5	5" w/ Striker
T-TRI8	8" w/ Striker



## SLEIGH BELLS

Beautiful Holiday sound throughout the year. Wooden handle. 24 Bells.

MODEL
T-2531



## TONE BARS WITH Mallet

Aluminum alloy bars suspended by string. Includes wood mallet.

MODEL	DESCRIPTION
T-TONE3	3 Bars with mallet
T-TONE5	5 Bars with mallet



## BAMBOO RAINSTICKS

Made of Bamboo. Choice of natural finish or beautiful hand-applied artwork. Resembles the sound of falling rain.

MODEL	DESCRIPTION
T-RAIN24	Rainstick 24" Long with Hand-applied artwork
T-RAIN39	Rainstick 39" Long with Hand-applied artwork
T-RAIN24N	Rainstick 24" Long - Natural finish
T-RAIN39N	Rainstick 39" Long - Natural finish



## FREESTYLE SERIES RAINSTICKS

Resembles the sound of falling rain. Hand painted designs. Extremely lightweight and durable synthetic shell.

MODEL	DESCRIPTION
T-RAIN39B	Rainstick, Boa Snake 39" Long
T-RAIN39S	Rainstick, Santa Fe 39" Long



## JR. RAINSTICK

Resembles the sound of falling rain. Compact size for squeezing into tight setups. Extremely lightweight and durable synthetic shell. 18" Long.

MODEL
T-RAINJR



## UNIVERSAL BAR CHIMES

Full body sound. Ideal for live gigs.  
32 solid aluminum alloy bars.

MODEL	DESCRIPTION
T-2304	Universal Bar Chimes



## DREAM CHIMES

Hollow chimes. Pleasant sound when played. Nice sustain.

MODEL	DESCRIPTION
T-DC	Hollow 26 Bar Dream Chimes



# STANDS

## CAJON STAND

Heavy-duty, Black powder coated mounting system with height adjustable Chrome stand. Easily adjusts to fit most cajons and securely holds cajon in place for playing ease. Perfect addition to any drum set up, It also enables you to stand while playing! Holds any cajon up to 15.5" wide and 22.5" tall.



MODEL	DESCRIPTION
<b>T-CAJSTD</b>	Toca Cajon Stand

## SMALL PERCUSSION TRAY STAND-MOUNTABLE

This small and mountable, Black Percussion Tray is compact & perfect for tight places. Capable of holding multiple handheld accessories such as Shakers, Cowbells, and Tambourines. Easily mount the percussion tray to most stands. The tray features a textured liner and raised edge to protect accessories from falling off.



MODEL	DESCRIPTION
<b>T-TRAY-SM</b>	Small Stand-Mountable Percussion Tray

## PERCUSSION TRAY TABLE

The Percussion Tray is great for holding Multiple percussion accessories such as Shakers, Cowbells, Tambourines and even Bongos! Includes fully adjustable stand with Double braced legs. Perfect for any drumset player.

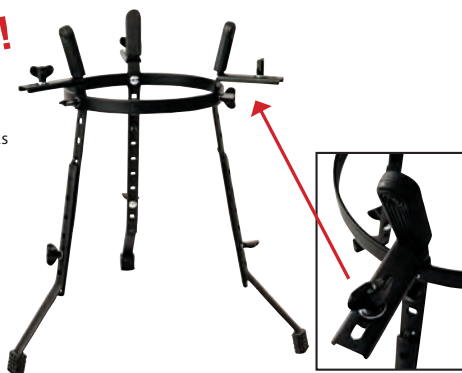


MODEL	DESCRIPTION
<b>T-TRAY</b>	Percussion Tray Table with Stand

## MULTI-PURPOSE PERCUSSION STAND

Designed to accommodate multiple types and sizes of world percussion instruments, from congas to djembes to doumbeks and beyond, the Toca Multipurpose Basket Stand provides superb versatility in an affordable package. Each leg can be individually adjusted allowing for seated, standing or tilted positions. Three-way adjustable basket accommodates the most popular drum sizes as well as odd shapes. Durable black powder coat finish. Tool-free assembly and disassembly in 2 minutes or less for quick set-up and strike.

**NEW!**



MODEL	DESCRIPTION
<b>3800</b>	Multi-Purpose Basket Stand

## STANDS

### LOW RIDER SEATED BONGO STAND

Fits all bongos. Fully adjustable with Double braced legs. Perfect for any drumset player.

MODEL  
TSBST



### BONGO STAND ATTACHMENT

Fits most double conga stands. C-clamp bongo mount. Height & angle adjustments.

MODEL  
TBSA



### PRO BONGO STAND

Heavy-duty all-chrome stand. Hinged height adjustment. C-clamp style bongo mount.

MODEL  
TPBS



### PRO BONGO STAND WITH ADJUSTABLE STABILIZER BARS

Heavy-duty tripod stand. Fully adjustable stabilizer bars. Chrome Plated double braced hardware. U-Clamp device fits onto any bongo center block.

MODEL  
TPBS-N

### PLAYER'S SERIES DOUBLE CONGA STAND

Chrome and black finish. Height adjustable. L-bracket mounts.

MODEL  
PSDCS



### PLAYER'S SERIES BONGO STAND

Chrome and black finish. Hinged height adjustment. C-clamp style bongo mount.

MODEL  
PSBS



### SYNERGY DOUBLE CONGA STAND

Black Powder -Coated & Chrome. Height adjustable. L-bracket mounts. Tripod legs with Rubber Feet

MODEL  
TSDCS



### SYNERGY BONGO STAND

Heavy-duty Black powder-coated stand. C-Clamp bongo mount. fits most bongo center blocks.

MODEL  
TSBS



# STANDS

## PRO DOUBLE CONGA STAND

Heavy-Duty, Height adjustable Chrome Stand. Double braced base with Rubber feet.

MODEL  
T3111STD



## CONGA BARREL STAND WITH COLLAPSIBLE LEGS

Fully adjustable stand, fits all congas. Fully adjustable legs and rubber grippers. Equipped with collapsible legs for easy set-up and tear down. Chrome hardware.

MODEL  
TCBS-C Collapsible Conga Barrel Stand  
TCBS Conga Barrel Stand (non-collapsible)



## PRO DJEMBE STAND

Fully adjustable stand securely holds any djembe in a traditional or angled position. Equipped with 2 adjustable nylon straps. Adjustable sliding C-clamp firmly sits on the neck of the drum. Chrome steel construction with tripod base. Memory clamp.

MODEL  
TDJS



## WORLD PERCUSSION ADJUSTABLE STAND

Height adjustable with adjustable drum basket. Fits doumbeks, udu drums and djembes up to 12" in diameter. Cushioned rubber basket ring prevents shell damage. Tripod base. Chrome hardware.

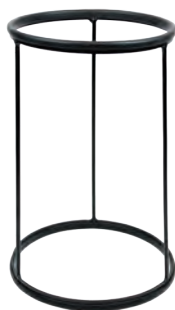
MODEL  
TDKS



## LIGHTWEIGHT PERCUSSION STAND

Solid, Black Powder-Coated Chrome Stand. Holds Congas, Djembes, Doumbeks. Stand is 12" in diameter. Cushioned rubber Top ring prevents shell damage.

MODEL DESCRIPTION  
TLPS Lightweight Percussion Stand



## CONGA BASKET STANDS

Height adjustable with adjustable drum basket. Fits doumbeks, udu drums and djembes up to 12" in diameter. Cushioned rubber basket ring prevents shell damage. Tripod base. Chrome hardware.

MODEL DESCRIPTION  
3700-SN Small, 10" & 11"  
3700-LN Large, 11 3/4" & 12 1/2"



## 3600 SERIES SEATED BARREL STANDS

Metal construction. Black powder coated finish. Ideal for seated players.

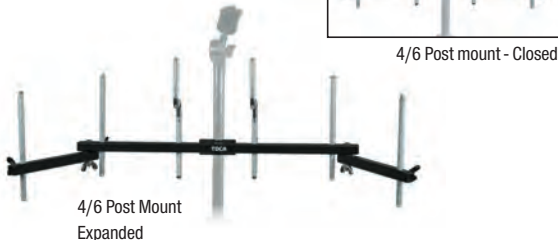
MODEL DESCRIPTION  
3610STD 10"  
3611STD 11"  
3611STD3/4 11 3/4"  
3612STD 12 1/2"

# MOUNTS

## ACCESSORY MOUNTS

Add percussion accessories to any drum set up with this heavy duty steel mount with adjustable rods. It easily attaches to stands from 3/8" to 1-1/8", and is available in 2 expandable sizes (2/4) and (4/6). Perfect for compact spaces!

MODEL	DESCRIPTION
<b>T-ACCMT-2/4</b>	Toca Accessory Mount, 2 or 4 Post
<b>T-ACCMT-4/6</b>	Toca Accessory Mount, 4 or 6 Post



## UNIVERSAL TAMBOURINE & FRAME DRUM MOUNT

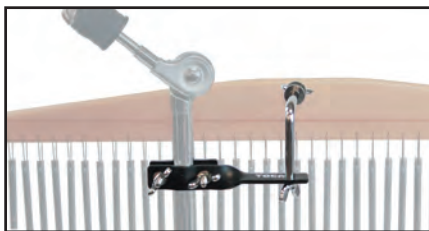
This mount is a great way to add a tambourine or frame drum to any set up. Its compact size is perfect for tight places and mounts easily to any 3/8" Rod. Fits most tambourine and frame drum sizes.

MODEL	DESCRIPTION
<b>T-UTAMMT</b>	Universal Tambourine/Frame Drum Mount

## CHIME & GUIRO MOUNTS

These heavy-duty, Black powder coated mounts with Chrome hardware easily mount and adjust to fit most stands. Securely hold chimes or Guiros in place for playing ease. Both mounts are a perfect addition to any drum set up. Try them with other hand percussion accessories!

MODEL	DESCRIPTION
<b>T-CHMT</b>	Toca Chime Mount
<b>T-GUMT</b>	Toca Guiro Mount





# PARTS

## DJEMBE PARTS

### DJEMBE FREESTYLE I AND FREESTYLE II HOOPS

MODEL	DESCRIPTION
TP-FRM9	9" Black Hoop for Freestyle I
TP-FRM10	10" Black Hoop for Freestyle I
TP-FRM12	12" Black Hoop for Freestyle I
TP-FRM14	14" Black Hoop for Freestyle I
TP-FEXR9B	9" Black Extended Hoop for Freestyle II only
TP-FEXR10B	10" Black Extended Hoop for Freestyle II only
TP-FEXR12B	12" Black Extended Hoop for Freestyle II only
TP-FEXR14B	14" Black Extended Hoop for Freestyle II only
TP-FEXR9G	9" Extended Rim, Antique Gold used for SFDMM-9AG & TF2DM-9GM
TP-FEXR10G	10" Extended Rim, Antique Gold - used for SFDMM-10AG & TF2DM-10GM
TP-FEXR12G	12" Extended Rim, Antique Gold - used for SFDMM-12AS & TF2DM-12GM
TP-FEXR14G	14" Extended Rim, Antique Gold - used for SFDMM-14AG & TF2DM-14GM
TP-FEXR9S	9" Extended Rim, Antique Silver - used for SFDMM-9AS
TP-FEXR10S	10" Extended Rim, Antique Silver - used for SFDMM-10AS
TP-FEXR12S	12" Extended Rim, Antique Silver - used for SFDMM-12AS
TP-FEXR14S	14" Extended Rim, Antique Silver - used for SFDMM-14AS

### DJEMBE FREESTYLE HEADS

TP-DJHSR7	7" Head for Colorsound
TP-FHM9	9" Goat Skin Head for Mechanically Tuned
TP-FHM10	10" Goat Skin Head for Mechanically Tuned
TP-FHM12	12" Goat Skin Head for Mechanically Tuned
TP-FHM14	14" Goat Skin Head for Mechanically Tuned
TP-FHR14	14" Goat Skin Head for Rope Tuned
GSPPS-9	9" Goat Skin Head for Rope Tuned
GSPPS-10	10" Goat Skin Head for Rope Tuned
GSPPS-12	12" Goat Skin Head for Rope Tuned
TP-FHMB9	9" Black Goat Skin Head for Mechanically Tuned
TP-FHMB10	10" Black Goat Skin Head for Mechanically Tuned
TP-FHMB12	12" Black Goat Skin Head for Mechanically Tuned
TP-FHMB14	14" Black Goat Skin Head for Mechanically Tuned
TPFHRB9	19" Black Goat Skin Head for Rope Tuned
TPFHRB10	10" Black Goat Skin Head for Rope Tuned
TPFHRB12	12" Black Goat Skin Head for Rope Tuned
TP-FHRB14	14" Black Goat Skin Head for Rope Tuned

### DJEMBE SYNTHETIC HEADS FOR FREESTYLE II SERIES

TP-DJHSR9	9" for Rope Tuned Freestyle II Djembe
TP-DJHSR10	10" for Rope Tuned Freestyle II Djembe
TP-DJHSR12	12" for Rope Tuned Freestyle II Djembe
TP-DJHSR14	14" for Rope Tuned Freestyle II Djembe
TP-DJHSM9	9" for Mechanically Tuned Freestyle II Djembe
TP-DJHSM10	10" for Mechanically Tuned Freestyle II Djembe
TP-DJHSM12	12" for Mechanically Tuned Freestyle II Djembe
TP-DJHSM14	14" for Mechanically Tuned Freestyle II Djembe

### DJEMBE HEADS FOR WOOD DRUMS

TP-DJHD13	18" Flatskin for 13" Djembe
TP-DJHD12	16" Flatskin for 12" Djembe
TP-DJHD10	14" Flatskin for 10" Djembe
TP-DJHD8	12" Flatskin for 8" or 7" Djembe
TP-DJHD13B	18" Flatskin for 13" Djembe, Black
TP-DJHD10B	14" Flatskin for 10" Djembe, Black
TP-DJHD8B	12" Flatskin for 8" or 7" Djembe, Black
TP-MDJH	20" Flatskin for Master Series Djembe

### DJEMBE FREESTYLE LUGS

TP-FRLUG-CB	Tuning Lug Complete, Black
TP-FRLUG-CG	Tuning Lug Complete, Gold
TP-FRLUG-CS	Tuning Lug Complete, Antique Silver
TP-DJRT	Rubber Tips for Djembe Lugs, (8)

## WORLD PERCUSSION PARTS

MODEL	DESCRIPTION
TP-FDMK9*	9" Mechanically Tuned Doumbek Head (Aztec Blue = AB, or African Dance = AD)
TP-FRDK9*	9" Doumbek Hoop (Aztec Blue = AB, or African Dance = AD)
TP-2547HD	8" Cuica Head with Stick
TP-2548HD	10" Cuica Head with Stick
TP-2548L	Cuica Tension Rod with Nut
TP-2548ST	Cuica Carrying Strap
TP-TTAMH	11" Tambora Hoop, Chrome
TP-TTAMHD	11" Tambora Head
TP-TTAML	Tambora Lug, Chrome
TP-TTAMSTP	Tambora Carrying Strap
TP-TJSK-HD	6" Synthetic Head for Jingle Sidekick
TP-FLEX11H	11" Full Size Flex Head
TP-FLEXJRH	9½" Flex Head for Jr. Flex Drum

## CONGA AND BONGO HEADS

### LIMITED EDITION, CUSTOM DELUXE & ERIC VELEZ WOOD SERIES

TP-48011	11" Conga Head
TP-48011-3/4	11¾" Conga Head
TP-48012-1/2	12½" Conga Head
TP-47007	7" Bongo Head
TP-47008	8½" Bongo Head
TP-47009	9" Bongo Head

### SHEILA E. SIGNATURE SERIES

TP-38011-3/4	11¾" Conga Head
TP-38012-1/2	12½" Conga Head
TP-37007	7" Bongo Head
TP-37008	8½" Bongo Head

### TRADITIONAL SERIES

TP-39011	11" Conga Head
TP-39011-3/4	11¾" Conga Head
TP-39012-1/2	12½" Conga Head
TP-37007	7" Bongo Head
TP-37008	8½" Bongo Head

### ELITE PRO WOOD

TP-3111HD	11" Conga Head
TP-3111-3/4HD	11¾" Conga Head
TP-3112-1/2HD	12½" Conga Head
TP-3170SHD	7" Bongo Head
TP-3170LHD	8½" Bongo Head

### ELITE PRO FIBERGLASS

TP-3111HDF	11" Conga Head
TP-3111-3/4HDF	11¾" Conga Head
TP-3112-1/2HDF	12½" Conga Head
TP-3170SHDF	7" Bongo Head
TP-3170LHDF	8½" Bongo Head

### PLAYER'S SERIES 2400, 2600, 2700 & 2800

#### WOOD DRUM HEADS

TP-20110	10" Conga Head
TP-20111	11" Conga Head
TP-24006	6" Bongo Head
TP-26007	7" Bongo Head
TP-27007	7" Bongo Head
TP-27008	8½" Bongo Head

### 4010 & 4070 FIBERGLASS SERIES

TP-40110	10" Conga Head
TP-40111	11" Conga Head
TP-40007	7" Bongo Head
TP-40008	8.5" Bongo Head

# PARTS

## SYNERGY WOOD, FIBERGLASS AND SYNTHETIC

MODEL	DESCRIPTION
TP-20110	10" Conga Head for Wood
TP-20111	11" Conga Head for Wood
TP-20110HF	10" Conga Head for Fiberglass
TP-20111HF	11" Conga Head for Fiberglass
TP-24006	6" Bongo Head for Wood
TP-2400634	6 3/4" Bongo Head for Wood
TP-24006SH	6" Bongo Head for Fiberglass
TP-24007SH	7" Bongo Head for Fiberglass

## CONGA AND BONGO TUNING HOOPS LIMITED EDITION SERIES

TP-48021-G	11" Toca EasyPlay Hoop, Gold
TP-48021-3/4G	11 3/4" Toca EasyPlay Hoop, Gold
TP-48022-G	12 1/2" Toca EasyPlay Hoop, Gold

## SHEILA E. SIGNATURE SERIES

TP-38021-6G	11" Traditional Hoop, Gold
TP-38021-3/4G	11 3/4" Traditional Hoop, Gold
TP-38022-G	12 1/2" Traditional Hoop, Gold
TP-37017-G	7" Traditional Bongo Hoop, Gold
TP-37018-G	8 1/2" Traditional Bongo Hoop, Gold

## ERIC VELEZ SIGNATURE SERIES

TP-48021BM	11" Toca EasyPlay Hoop, Black Mirror
TP-480213/4BM	11 3/4" Toca EasyPlay Hoop, Black Mirror
TP-48022BM	12 1/2" Toca EasyPlay Hoop, Black Mirror
TP-47017BM	7" Toca EasyPlay Bongo Hoop, Black Mirror
TP-47018BM	9" Toca EasyPlay Bongo Hoop, Black Mirror

## CUSTOM DELUXE WOOD

TP-48021-C	11" Toca EasyPlay Hoop, Chrome
TP-48021-3/4C	11 3/4" Toca EasyPlay Hoop, Chrome
TP-48022-C	12 1/2" Toca EasyPlay Hoop, Chrome
TP-47017-C	7" Toca EasyPlay Bongo Hoop, Chrome
TP-47018-C	8 1/2" Toca EasyPlay Bongo Hoop, Chrome

## CUSTOM DELUXE FIBERGLASS

TP-45018-C	8 1/2" Toca EasyPlay Hoop, Chrome
TP-45021	11" Toca EasyPlay Hoop, Chrome
TP-45021-3/4	11 3/4" Toca EasyPlay Hoop, Chrome
TP-45022	12 1/2" Toca EasyPlay Hoop, Chrome
TP-45017-C	7" Toca EasyPlay Bongo Hoop, Chrome

## TRADITIONAL SERIES

TP-39021-BC	11" Traditional Hoop, Brushed Chrome
TP-38021-3/4BC	11 3/4" Traditional Hoop, Brushed Chrome
TP-38022-BC	12 1/2" Traditional Hoop, Brushed Chrome
TP-37018-BC	8 1/2" Traditional Bongo Hoop, Brushed Chrome

## ELITE PRO WOOD

TP-3111H	11" Elite Pro Hoop, Chrome
TP-31111-3/4H	11 3/4" Elite Pro Hoop, Chrome
TP-3112-1/2H	12 1/2" Elite Pro Hoop, Chrome
TP-3170SH	Elite Pro Small Bongo Hoop, Chrome
TP-3170LH	Elite Pro Large Bongo Hoop, Chrome

## ELITE PRO FIBERGLASS

TP-3111HB	11" Elite Pro Hoop, Black Chrome
TP-31111-3/4HB	11 3/4" Elite Pro Hoop, Black Chrome
TP-3112-1/2HB	12 1/2" Elite Pro Hoop, Black Chrome
TP-3170SHB	Elite Pro Small Bongo Hoop, Black Chrome
TP-3170LHB	Elite Pro Large Bongo Hoop, Black Chrome

## SHEILA E PLAYER'S SERIES WOOD

MODEL	DESCRIPTION
TP-20120E	10" Player's Traditional Hoop, Black
TP-20121E	11" Player's Traditional Hoop, Black
TP-27020E	7" Player's Traditional Bongo Hoop, Black
TP-27021E	8 1/2" Player's Traditional Bongo Hoop, Black

## PLAYER'S 4010 & 4070 FIBERGLASS SERIES

TP-40121	11" Player's Hoop, Black
TP-40020	7" Player's Bongo Hoop, Black
TP-40021	8 1/2" Player's Bongo Hoop, Black

## PLAYER'S 2800 & 2700 WOOD SERIES

TP-20120	10" Player's Hoop, Black
TP-20121	11" Player's Hoop, Black
TP-27020	7" Player's Bongo Hoop, Black
TP-27021	8 1/2" Player's Bongo Hoop, Black

## SYNERGY CONGAS AND BONGOS

TP-2310R	10" Synergy Hoop, Black
TP-2311R	11" Synergy Hoop, Black
TP-2310RF	10" Synergy Hoop, Black for Fiberglass
TP-2311RF	11" Synergy Hoop, Black for Fiberglass
TP-2100SR	6" Synergy Bongo Hoop, Black
TP-2100LR	7" Synergy Bongo Hoop, Black
TP-2100SRF	6" Synergy Bongo Hoop, Black for Fiberglass
TP-2100LRF	7" Synergy Bongo Hoop, Black for Fiberglass

## CONGA/BONGO MISCELLANEOUS PARTS CONGA LUGS

TP-38001-G	Limited Edition Series, Gold
TP-TRC	Custom Deluxe, Elite Pro & Player's Series, Chrome
TP-TRCBM	Eric Velez Series, Black Mirror
TP-3100LUGC	Elite Pro Conga Tuning Lug, Chrome
TP-3100LUGB	Elite Pro Conga Tuning Lug, Black Chrome
TP-TRSCC	Synergy Conga Lug, Chrome

## BONGO LUGS

TP-TRB	Custom Deluxe, Chrome
TP-TPBBM	Eric Velez Series, Black Mirror
TP-37001-BC	Traditional Bongo Lug, Brushed Chrome
TP-3701LUG	Rafael Padilla, Chrome
TP-3170LUGC	Elite Pro Bongo Tuning Lug, Chrome
TP-3170LUGB	Elite Pro Bongo Tuning Lug, Black Chrome
TP-TRSB	Synergy Bongo Lug, Chrome

## CONGA PARTS

TP-HAND	Handle w/ Hardware, Chrome, 1 Pc
TP-HANDBC	Handle w/ Hardware, Brushed Chrome, 1 Pc
TP-HAND-G	Handle w/ Hardware, Gold, 1 Pc
TP-RT	Conga/Bongo Tension Rod Rubber, set of 6
TP-RUBG1	Side Plate Rubber Gaskets for Wood Drums
TP-TW	Tuning Wrench w/ Lug Grease In Pouch
TP-46002-C	Side Plates w/ Carriage Bolts, Fiberglass, Chrome
TP-38002-GN	Side Plates w/ Carriage Bolts, Wood Series, Gold
TP-38002-CN	Side Plates w/ Carriage Bolts, Wood Series, Chrome
TP-SCF	Sienta Conga Foot
TP-SCL	Sienta Conga Leg w/ Foot

## RUBBER CONGA BOTTOM

TP-RB11	11" Quinto Rubber Conga Bottom, Eric Velez
TP-RB11-3/4	11 3/4" Conga Rubber Conga Bottom, Eric Velez
TP-RB12-1/2	12" Tumba Rubber Conga Bottom, Eric Velez

# PARTS

## TIMBALE PARTS

MODEL	DESCRIPTION
TP-0014BC	14" Pro Line Timbale Hoop
TP-0014SS	14" Elite Timbale Hoop
TP-0015BC	15" Pro Line Timbale Hoop
TP-0015SS	15" Elite Timbale Hoop
TP-T1415S-14	14" Sheila E Timbale Hoop, Black
TP-T1415S-15	15" Sheila E Timbale Hoop, Black
TP-417PEN-14	14" Pete Escovedo Timbale Hoop, Gold
TP-417PEN-15	15" Pete Escovedo Timbale Hoop, Gold
TP-T1415-14HB	14" Custom Deluxe Timbale Hoop, Black Mirror
TP-T1415-15HB	15" Custom Deluxe Timbale Hoop, Black Mirror
TP-T1314-13	13" Player's Timbale Hoop, Black
TP-T1314-14	14" Player's Timbale Hoop, Black
TP-T1415LUG	Custom Deluxe Timbale Tension Lug, Brushed Nickel
TP-T1314TR	Player's Timbale Tuning Lug, Chrome
TP-T1415-14H	14" Timbale Head
TP-T1415-15H	15" Timbale Head
TP-406/8-LUG	Acrylic Timbale Tension Lug
TP-406HD	Acrylic Timbale Head
TP-406RIM	6" Acrylic Timbale Rim
TP-408HD	8" Acrylic Timbale Head
TP-408RIM	8" Acrylic Timbale Rim

## BATA HEAD REPLACEMENTS

TP-33002	12" Head for Iya - Large
TP-33005	5" Head for Oconcolo - Small
TP-33006	5.5" Head for Omele - Medium
TP-33007	7" Head for Oconcolo - Small
TP-33008	7" Head for Iya - Large
TP-33009	8.5" Head for Omele - Medium
TP-33012	12" Rim for Iya - Large
TP-33015	5" Rim for Oconcolo - Small
TP-33016	5.5" Rim for Omele - Medium
TP-33017	7" Rim for Oconcolo - Small
TP-33018	7" Rim for Iya - Large
TP-33019	8.5" for Omele - Medium

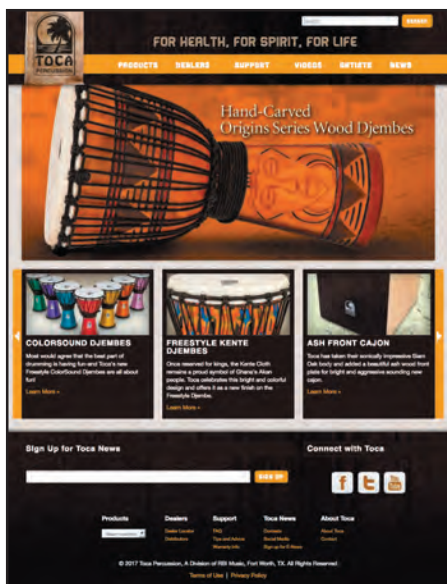
## NESTING DRUMS REPLACEMENT PARTS

TP-ND8	8" Nesting drum fiberskin head
TP-ND10	10" Nesting drum fiberskin head
TP-ND12	12" Nesting drum fiberskin head
TP-ND3PC	Nesting drum fiberskin heads - 3pc. set (8", 10", 12")
TP-NT12	12" tom tom head
TP-NT14	14" tom tom head
TP-NT16	16" tom tom head
TP-NT3PC	Tom tom heads - 3pc. set (12", 14", 16")
T-NTMK	Tom tom mallets Kente Cloth
T-NTMWP	Tom tom mallets Woodstock Purple



Visit us at: [Tocapercussion.com](http://Tocapercussion.com)

For complete details on all of our products,  
Where to buy Toca, Customer Service, Events & More!



Thank you for Choosing  
Toca Percussion!



***RBImusic***  
musical instrument distributors since 1961



**Ph: 800.424.4724 or 817.335.2561**  
**sales@rbimusic.com • rbimusic.com**

©2022 RBImusic. All rights reserved. Toca Percussion is a Division of RBImusic.  
Pricing is subject to change without notice. Not responsible for typographical errors.  
Catalog Design by: Heather Foley