



2023 CATALOG



# TOCA PERCUSSION

---

## CELEBRATING 30 YEARS OF PERCUSSION WITH TOCA!

Toca Percussion was founded in 1993 by KMC Music during the heyday of the Latin and Afro-Cuban influence on popular music and rock n' roll. Toca Percussion was designed to provide the "Afro-Cuban" sound and to offer a different look for hand percussion instruments. Over the past three decades, Toca Percussion has become one of the top hand percussion companies in the world with a line of well over 500 products.

"We are excited to celebrate our 30th anniversary with the introduction of these limited edition drums & bells," said Brad Kirkpatrick, President of RBI. "These instruments are a testament to our commitment to offering a distinctive choice in style, design, & sound. We believe these stunningly beautiful 30th Anniversary drums & bells will become collectors' items and we encourage everyone to grab theirs quickly."



# 30TH ANNIVERSARY



## 30TH ANNIVERSARY CONGAS

These Limited Edition, 30th Anniversary Margarita Blanca Congas feature luminescent shells that are richly adorned with one-of-a-kind anodized hardware. They're topped with white Remo® Nuskyn® heads and finished off with the 30th anniversary logo on the heads and nameplates. The drums have 28" tall, seamless fiberglass shells. The bigger belly shape produces deeper bass tones and crisp highs.

MODEL	DESCRIPTION
5311-MB	11" Quinto
5311-3/4MB	11 3/4" Conga
5312-1/2MB	12 1/2" Tumba



## 30TH ANNIVERSARY BONGOS

These Limited Edition, 30th Anniversary Margarita Blanca Bongos feature luminescent shells that are richly adorned with one-of-a-kind anodized hardware. They're topped with white Remo® Nuskyn® heads and finished off with the 30th anniversary logo on the heads and nameplates. The drums have seamless fiberglass shells.

MODEL	DESCRIPTION
5300-MB	Bongos



## 30TH ANNIVERSARY COWBELLS

The bodies of the 30th Anniversary Cowbells mimic the luminescent shells of the drums and come in both bongo and timbale bell versions. The classic 30th Anniversary logo is adorned on the face of each bell, making all these products predestined to become collectors' items.

MODEL	DESCRIPTION
3026-TMB	Bongo Bell
3028-TMB	Timbale Bell





# CONGAS



**NEW!**

## COMMUTER CONGAS

Introducing the New Commuter Conga, a portable drum perfect for musicians on the go. Available in 10" & 11" head sizes and comes standard with Remo Fiberskyn heads. Drums are sold separately, with or without a stand or choose the set of 2 with a double stand. The lugs are accessible at the top, making it simple and quick to adjust the sound and tuning. The 10" drum has a 3" diameter port on the bottom, allowing the highs to ring loud & true while letting the slaps come through. The 11" drum has a 6" diameter port on the bottom, allowing for astonishing mid-tones and just the right amount of bass. Heavy-duty steel stand features an adjustable arm to hold either size Commuter Conga securely. Add a third Commuter Conga to get a true Quinto, Conga & Tumba set up.

MODEL	DESCRIPTION
TCCD-S	10" & 11" Commuter Congas w/ a Double Stand
TCCS-10S	10" Commuter Conga w/ a Single Stand
TCCS-11S	11" Commuter Conga w/ Single Stand
TCCS-10	10" Commuter Conga
TCCS-11	11" Commuter Conga



## JIMMIE MORALES CONGAS PURPLE SPARKLE FINISH

This Series was designed in conjunction with legendary salsa conguero, Jimmie Morales. The drums have 28" tall, seamless fiberglass shells with a stunning Purple Sparkle finish. The bigger belly produces deeper bass tones & crisp highs. Perfectly balanced for stage & studio use, this drum series feature Black Mirror, Chrome hardware with 6 tuning lugs, Remo Skyndeepp™ heads with EasyPlay hoop, & a custom Jimmie Morales Signature Plate. Matching 7" and 8.5" Bongos are also available.



MODEL	DESCRIPTION
5111-FPS	Jimmie Morales 11" Quinto, Purple Sparkle
5111-3/4FPS	Jimmie Morales 11 3/4" Conga, Purple Sparkle
5112-1/2FPS	Jimmie Morales 12 1/2" Tumba, Purple Sparkle

## ERIC VELEZ SIGNATURE SERIES CONGAS

Eric's blurring style is based heavily on Afro-Cuban technique. He prefers a finger-sensitive, controllable drum that he doesn't have to fight to play quietly or loudly. 28" tall two-ply high premium Asian Oak construction, ideal for seated players. Classic Gun Metal Finish with Black Mirror Chrome hardware. Contemporary Afro-Cuban shape for added volume & resonance. Features 6 tuning lugs for greater tuning range. Plantation grown wood. Matching Bongos and Timbales available.

MODEL	DESCRIPTION
4911EVGG	11" Quinto
4911-3/4EVGG	11 3/4" Conga
4912-1/2EVGG	12 1/2" Tumba



## CUSTOM DELUXE CONGAS

30" seamless fiberglass or 2-Ply, Asian Oak wood shells. High-luster chrome hardware, natural bison heads, and EasyPlay hoops with 6 tuning lugs. Larger bowl shape for deeper bass tones. Matching bongos available.

MODEL	DESCRIPTION
4611*	11" Quinto
4611-3/4*	11 3/4" Conga
4612-1/2*	12 1/2" Tumba

Available Finishes:

\*Fiberglass: FR = Red Sparkle, FS = Silver Sparkle

\*Wood: NW = Natural, DW = Dark Wood, BW = Blue,

BKS = Black Sparkle, SG = Sahara Gold, PW = Transparent Purple

SAHARA  
GOLD



TRANSPARENT  
PURPLE



\*Some product images shown are artist renderings. Final product finishes or colors may vary slightly.

# CONGAS



## SYNERGY DELUXE CONGAS

Taking Toca's enormously successful Synergy line of drums to the next level, Synergy Deluxe provides a number of upgrades without breaking the bank.

The Congas have 28" tall, two-ply Asian Oak wood shells with Tucked Fiberskyn™ heads by Remo®. They feature low contact counterhoops for more open sound & chrome hardware. Finished in a beautiful Luxe matte, Wine Burst. Adjustable basket stands included with each drum. Matching 6" & 6 3/4" bongos are also available.

**2350-\*** 10" & 11" Conga Set /Basket Stands  
**23512-\*** Tumba w/ Basket Stand

\*Available Colors:  
 CF= Coffee Fade, N = Natural, PF = Purple Fade,  
 WF = Wine Fade, WB = Wine Burst



**NEW  
COLOR!**

## SYNERGY FIBERGLASS JR. CONGA SET

A smaller version of the popular Synergy Conga Set. 24" tall, lightweight & durable fiberglass shells, easy to clean. 8" and 9" natural rawhide heads. Includes height adjustable stand. Available in red finish. Matching bongos available.

MODEL	DESCRIPTION
<b>2300/89-FRD</b>	8" & 9" Conga Set, Red



## SYNERGY FIBERGLASS AND WOOD CONGA SETS

10" & 11" rawhide heads, 28" tall. Black powder coated hardware. Produces high tonal ranges ideal for live performances. Quality fiberglass or 2-Ply wood shell construction. EasyPlay style hoops. Chrome tuning lugs. Includes height adjustable double braced, chrome & black powder coated, double conga stand. Matching bongos available.

### FIBERGLASS SETS

MODEL	DESCRIPTION
<b>2300F*</b>	10" & 11" Conga Set, White
<b>2300F*</b>	10" & 11" Conga Set, Red
<b>2300FRD-K</b>	10" & 11" Conga Set w/Bongos, Red
<b>2300FBK-K</b>	10" & 11" Conga Set w/Bongos, Black

\*Fiberglass Finishes:  
 WH = White, RD = Red, BK = Black

### WOOD SETS

MODEL	DESCRIPTION
<b>2300*</b>	10" & 11" Conga Set
<b>2300N-K</b>	10" & 11" Conga Set with Bongos

\*Wood Finishes: Amber (AMB), Bahama Blue (BB), Rio Red (RR), Tobacco (TOB) and Natural (N).



## PLAYER'S SERIES CONGAS

Get Toca quality components and finishes at entry-level prices. Available in 10" & 11" sets, with 2-Ply wood shells. Sets include a heavy-duty height adjustable stand. Congas have four countersunk carriage bolts on each sideplate with EasyPlay Hoops, fully tucked bison heads and 5 lugs. Matching bongos available.

MODEL	DESCRIPTION
-------	-------------

<b>2800*</b>	10" & 11" Conga set, Wood
--------------	---------------------------

\*Wood Finishes: N = Natural or C = Cherry



## TRADITIONAL WOOD CONGAS

Combines a contemporary finish with the essence of Afro-Cuban tradition, all with notable old-school design. 30" Tall, Two-ply plantation grown Asian Oak shells. Beautiful Dark Wood finish with brushed chrome hardware. Traditional Afro-Cuban shape designed for added volume and resonance. Traditional hoop with extended collar. Matching bongos available.

MODEL	DESCRIPTION
-------	-------------

<b>3911*</b>	11" Quinto
--------------	------------

<b>3911-3/4*</b>	11 3/4" Conga
------------------	---------------

<b>3912-1/2*</b>	12 1/2" Tumba
------------------	---------------

\*Finishes: T = Natural or D = Dark Wood



## ELITE PRO CONGAS

This affordable Conga set is ideal for the intermediate player who's seeking the size and sound of full sized drums. Equipped with EasyPlay Style hoop with 6 lugs. Plated chrome hardware. 28" tall, 2-Ply Asian Oak wood shells. Includes fully adjustable double conga stand with single top plate mounting bracket. Matching bongos available.

MODEL	DESCRIPTION
-------	-------------

<b>3100*</b>	11" Quinto & 11 3/4" Conga Set
--------------	--------------------------------

<b>3112-12*</b>	12" Tumba
-----------------	-----------

\* Finishes:

Crimson Maple Fade w/Chrome Hardware (CF),  
 Natural Maple Fade w/Chrome Hardware (NF)







# BONGOS

## JIMMIE MORALES BONGOS PURPLE SPARKLE FINISH

Designed in conjunction with legendary salsa conguero, Jimmie Morales. The 7" and 8.5" Bongos have seamless fiberglass shells with a stunning Purple Sparkle finish. The bongos feature Black Mirrored Chrome hardware and tuning lugs, Black Remo Skyndeept™ heads with EasyPlay hoops, and a custom Jimmie Morales Signature Plate. Matching Congas are also available.

MODEL	DESCRIPTION
5100-FPS	Jimmie Morales Bongos, Purple Sparkle



## ERIC VELEZ SIGNATURE SERIES BONGOS

These unique 7" & 9" bongos have steel bottoms and are constructed of premium, 2-ply Asian Oak. Sleek, Black Mirror chrome hardware and Gun Metal Glitter Finish, gives it that old-school look with a modern flair that's sure to attract attention! Features EasyPlay hoops, and Remo tucked Fiberskyn heads, with 8 tuning lugs. Matching Congas and Timbales available.

MODEL	DESCRIPTION
4901EVGG	7" & 9" Bongos



## ERIK PIZA SIGNATURE BONGOS IRIDESCENT ORANGE FINISH

Erik Piza Signature Bongos feature Fiberglass shells with a traditional Afro-Cuban design, Black powder-coated Traditional hoops and hardware. The bongos boast a bright, iridescent Orange finish, 7" & 9" Remo Fiberskyn heads and adorned with a custom designed Erik Piza Signature Plate.

MODEL	DESCRIPTION
5200-FIR	Erik Piza Bongos, Iridescent Orange



*\*Some product images shown are artist renderings. Final product finishes or colors may vary slightly.*



# BONGOS



## CUSTOM DELUXE BONGOS

Available with Seamless Fiberglass or 2 ply, Asian Oak wood shells Featuring High-luster chrome hardware, Natural top grade Bison heads, and EasyPlay hoops. Multiple finishes and matching congas available.

MODEL	DESCRIPTION
<b>4600*</b>	7" & 8½" Bongos

\*Finishes: (Fiberglass) FR = Red Sparkle, FS = Silver Sparkle (Wood) NW = Natural Wood, DW = Dark Wood, BW = Blue Wood, BKS = Black Sparkle, PW = Transparent Purple, SG = Sahara Gold



## SYNERGY DELUXE WOOD BONGOS

The Synergy wood bongo shells are made from environmentally-friendly, plantation Wood. They have 6" & 6-3/4" diameter Remo® synthetic heads, and chrome hardware. available in multiple finishes. Matching conga set also available.

MODEL	DESCRIPTION
<b>2150-*</b>	Wood Bongos

\*Finishes:  
CF = Coffee Fade, N = Natural,  
PF = Purple Fade, WF = Wine Fade,  
WB = Wine Burst

**NEW  
COLOR!**



## PLAYER'S SERIES BONGOS

Two-ply wood shells with natural rawhide heads, Black powder coated rims and chrome tuning lugs. High quality construction at an entry-level price. Matching congas available.

MODEL	DESCRIPTION
<b>2400N</b>	6" & 7" Bongos
<b>2600N</b>	7" & 8½" Bongos



## SYNERGY SYNTHETIC BONGOS

Rawhide heads. Black powder coated hardware. Produces high tonal ranges. ABS plastic construction. Traditional style hoops. Chrome tuning lugs. Matching congas available.

MODEL	DESCRIPTION
<b>2100*</b>	6" & 7" Bongos

\*Finishes:  
SB = Black,  
SR = Red,  
SW = White



## SYNERGY WOOD BONGOS

Asian Oak shells, natural rawhide heads with Black, powder coated hardware and 8 tuning lugs. Matching congas available.

MODEL	DESCRIPTION
<b>2100*</b>	6" & 6¾" Bongos

\*Finishes:  
AMB = Amber,  
BB = Bahama Blue,  
N = Natural,  
RR = Rio Red,  
TOB = Tobacco



## TRADITIONAL SERIES WOOD BONGOS

2-Ply plantation grown, Asian Oak shells. Natural rawhide heads with brushed chrome hardware. Matching congas available.

MODEL	DESCRIPTION
<b>3900*</b>	7" & 8½" Bongos

\*Finishes:  
D = Dark Wood,  
T = Natural Wood



## ELITE PRO BONGOS

2-ply Asian Oak shells, EasyPlay hoop, plated chrome hardware. Crimson Maple Fade or Natural Fade finish. Matching congas available.

MODEL	DESCRIPTION
<b>3170CF</b>	7" & 8½" Bongos, Crimson
<b>3170NF</b>	7" & 8½" Bongos, Natural

\*Finishes:  
D = Dark Wood,  
T = Natural Wood





# TIMBALES

## ELITE SERIES TIMBALES

14" & 15" Timbales. Heavy-duty single braced adjustable stand. Fully adjustable cowbell post. (cowbells sold separately).

MODEL  
T-315



## PLAYER'S SERIES TIMBALES

13" & 14" Timbales. Double braced tilting stand. Improved cowbell bracket. Improved cascara sound. (cowbells sold separately).

MODEL  
T-PT1314



Toca Endorser:  
Tito Rodriguez Jr.  
Photo By:  
Joyce Michel

## PRO LINE TIMBALES

14" & 15" Timbales. Ultimate cascara sound. Wing nut is lower so there's no cross sticking interference. Fully adjustable tripod stand. Fully adjustable cowbell mounting bracket. (cowbells sold separately).

MODEL  
TPT1415-BC



## CUSTOM DELUXE TIMBALES

14" and 15" chrome plated steel shells produce a classic cascara and are topped with Powder Coated Antique Bronze finished rims. Tuning bolts, lowered below the rim, reduce interference for easier rim shots and improved speed when moving from one drum to the other. Comes with a fully adjustable cowbell mount and mounting bracket. The mounting bracket wing nut has been placed below the rims, eliminating cross-sticking interference. Complete with a fully adjustable tripod stand.

MODEL	DESCRIPTION
T1417-AB	14" & 15" Custom Deluxe Timbales, Antique Bronze



## ERIC VELEZ SIGNATURE SERIES TIMBALES

Ultimate cascara sound. Lower wing nut gets rid of cross sticking interference. Includes fully adjustable tripod stand. Tuning rod bolts are lower than rim - allowing for crisp rim shots without interference. Sleek, Black mirror chrome hardware with Gun Metal Glitter Finish gives it that old-school look with a modern flair that's sure to attract attention! Fully adjustable cowbell mounting bracket. (cowbells sold separately). Matching Congas and Bongos also available.

MODEL	DESCRIPTION
T1415-EVGG	14" & 15" Timbales

# DJEMBES



## COLORSOUND DJEMBES METALLICS & PASTELS

### COLORSOUND DJEMBES

Ideal for music educators. Drums measure 12½" high and are made of a lightweight, synthetic material with a 7" synthetic head. Available in 7 unique Metallic Colors: **Red, Orange, Yellow, Green, Blue, Indigo and Violet.** Also available in Pastel Colors: **Blue, Green, Pink, Purple and Yellow.** Sold individually, Metallics also sold in set of 7.

MODEL	DESCRIPTION
TFCDJ-7MS	Set of 7 Metallic Djembes
TFCDJ-7MR	Metallic Red
TFCDJ-7MO	Metallic Orange
TFCDJ-7MY	Metallic Yellow
TFCDJ-7MG	Metallic Green
TFCDJ-7MB	Metallic Blue
TFCDJ-7MI	Metallic Indigo
TFCDJ-7MV	Metallic Violet
TFCDJ-7PB	Pastel Blue
TFCDJ-7PG	Pastel Green
TFCDJ-7PK	Pastel Pink
TFCDJ-7PR	Pastel Purple
TFCDJ-7PY	Pastel Yellow



PASTELS!



**GREAT FOR  
BEGINNERS!**



METALLICS!



# DJEMBES

## FREESTYLE DJEMBES MECHANICAL & ROPE TUNED

### FREESTYLE MECHANICALLY TUNED DJEMBES

Features new extended collar hoop for greater tuning range. Equipped with low mass tuning system. 14" drums have a lightweight and extremely durable PVC shell, and include matching padded bag with fully adjustable shoulder straps & side pocket. Available in: **Bali Red (RP)**, **Fiesta (F)**, **Antique Silver (AS)**, **African Sunset (AFS)**, **Black Mamba (BM)** and **Kente (K)**. \*\* Add a (B) after the color choice for 14" with Bag. (example: SFDMX-14KB)

MODEL	DESCRIPTION
<b>SFDMX-9*</b>	9" Head, 16½" Tall
<b>SFDMX-10*</b>	10" Head, 20" Tall
<b>SFDMX-12*</b>	12" Head, 24" Tall
<b>SFDMX-14**</b>	14" Head, 26" Tall with Bag

### FREESTYLE ROPE TUNED DJEMBES

These djembes have a lightweight and extremely durable PVC shell, and Hand selected goatskin head. Protective rubber/non-slip bottom. Patented. Low stretch Alpine rope with braided cores produces a rich bass tone, with sharp, piercing rim tones and ensures stable tuning. Available in: **Bali Red (RP)**, **Fiesta (F)**, **Antique Silver (AS)**, **African Sunset (AFS)**, **Black Mamba (BM)**, **Kente (K)** and **Woodstock Purple (WP)**. \*\* Add a (B) after the color choice for 14" with Bag. (example: SFDJ-14KB)

MODEL	DESCRIPTION
<b>SFDJ-7*</b>	7" Head, 12" Tall
<b>SFDJ-9*</b>	9" Head, 16½" Tall
<b>SFDJ-10*</b>	10" Head, 20" Tall
<b>SFDJ-12*</b>	12" Head, 24" Tall
<b>SFDJ-14**</b>	14" Head, 26" Tall with bag



BALI RED



BLACK MAMBA



AFRICAN SUNSET



ANTIQUE SILVER



FIESTA



AFRICAN SUNSET



KENTE



WOODSTOCK PURPLE



BLACK MAMBA





# DJEMBES



## FREESTYLE II DJEMBES

**BEST  
SELLERS!**

### MECHANICALLY TUNED

All weather synthetic head eliminates stretching, drying or losing pitch. Higher, crisp slaps & deeper bass tones. Lightweight and extremely durable PVC shell with a Protective nonslip rubber bottom. 14" djembe includes a carrying bag. Sizes: 9" head, 16-1/2" tall, 10" head, 20" tall 12" head, 24" tall and 14" head, 26" tall.

MODEL	DESCRIPTION
<b>TF2DM-9*</b>	Mechanical Djembe 9"
<b>TF2DM-10*</b>	Mechanical Djembe 10"
<b>TF2DM-12*</b>	Mechanical Djembe 12"
<b>TF2DM-14**</b>	Mechanical Djembe 14" with Bag

\*Available Colors:

AFS = African Sunset, RM = Red Mask, S = Spirit, SC = Spun Copper, T = Thinker

\*\* Add a (B) after the color choice for 14" with Bag. ( example: TF2DJ-14SB ).



SPIRIT



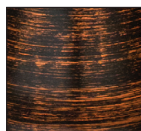
AFRICAN SUNSET



RED MASK



THINKER



SPUN COPPER

### ROPE TUNED

All weather synthetic head eliminates stretching, drying or losing pitch. Higher, crisp slaps and deeper bass tones. Lightweight and extremely durable PVC shell. Protective nonslip rubber bottom. 14" djembe includes a carrying bag. Patented. Increased rope runners allow for improved tuning.

MODEL	DESCRIPTION
<b>TF2DJ-7</b>	Rope Tuned Djembe 7"
<b>TF2DJ-9*</b>	Rope Tuned Djembe 9"
<b>TF2DJ-10*</b>	Rope Tuned Djembe 10"
<b>TF2DJ-12*</b>	Rope Tuned Djembe 12"
<b>TF2DJ-14**</b>	Rope Tuned Djembe 14" with Bag

\*Available Colors:

AFS = African Sunset, R = Red, S = Spirit, SC = Spun Copper, T = Thinker

\*\* Add a (B) after the color choice for 14" with Bag. ( example: TF2DJ-14SB ).



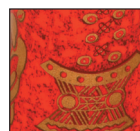
RED



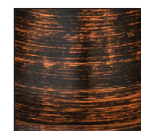
AFRICAN SUNSET



SPIRIT



THINKER



SPUN COPPER

#### 14" DJEMBE BAGS





## DJEMBES

### FREESTYLE LIGHTWEIGHT DJEMBE SERIES

All-synthetic, lightweight, and extremely durable PVC shell with head allows this drum to be one of the lightest drums in the world. Improved heads are now stronger than ever, pre-tuned, and permanently attached. Shoulder strap with drawstring carrying bag included.

MODEL	DESCRIPTION
SFDL-9*	9" Head, 16" Tall
SFDL-10*	10" Head, 19" Tall
SFDL-12*	12" Head, 23" Tall

\*Available Colors:

African Dance (AD), Earth Tone (EB),  
Rasta (RB), Woodstock Purple (WP)



EARTH TONE



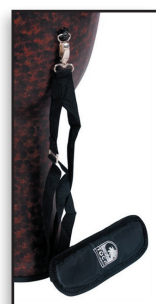
RASTA



WOODSTOCK  
PURPLE



AFRICAN DANCE



REMOVABLE,  
ADJUSTABLE  
SHOULDER STRAP!

**IMPROVED,  
STRONGER HEADS!**



Attached Heads Have Full Graphics!

### MASTER SERIES DJEMBES WITH BAG

Beautifully hand carved solid wood djembe. Carved from the highest grade, plantation grown mahogany. Top-grade Goatskin Head. Low Stretch Alpine rope. Includes padded bag.

MODEL	DESCRIPTION
TMDJ-12NB	12" Head, 24" Tall
TMDJ-13NB	13" Head, 26" Tall

### CARVED- BLACK MAMBA ROPE TUNED DJEMBE WITH BAG

Low-stretch Alpine rope with braided cores. 10", 12" and 13" djembes include djembe hat & bag. Heavy-duty padded Pro Bag and djembe hat protects the drum. Features adjustable shoulder straps, hip belt and exterior pouches.

MODEL	DESCRIPTION
ABMD-7	7" Head, 12" Tall
ABMD-8	8" Head, 16" Tall
ABMD-10	10" Head, 20" Tall
ABMD-12	12" Head, 24" Tall
ABMD-13	13" Head, 26" Tall



PADDED DJEMBE BAG FOR  
MASTER SERIES AND CARVED  
BLACK MAMBA DJEMBES

# DJEMBES



## STREET SERIES DJEMBES

Hand carved from one piece of environmentally-friendly, plantation grown Mahogany - Kiln dried with 20 coats of teak oil to protect & preserve the wood. Hand selected goatskin heads, with authentic rope tuning.

Available Sizes:  
Small (approx. 8" head & 16" tall),  
Medium (approx. 10" head & 20" tall),  
Large (approx. 12" head & 24" tall)

MODEL	DESCRIPTION
<b>TSSDJ-S*</b>	8" Djembe, Small
<b>TSSDJ-M*</b>	10" Djembe, Medium
<b>TSSDJ-L*</b>	12" Djembe, Large

\*Available Finishes:  
Brown & Black Stain (B), Black Onyx (BO),  
Cherry Stain (C), Cascade (CD), Diamond (D),  
Giraffe (GF)



DIAMOND



GIRAFFE



GIRAFFE



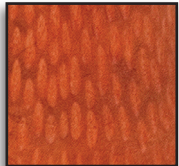
DIAMOND



CASCADE



BLACK ONYX



CHERRY STAIN



BROWN/BLACK STAIN

**HAND CARVED  
DETAILS!**



BROWN/BLACK STAIN



CHERRY STAIN



BLACK ONYX





## DJEMBES/ACCESSORIES

### ORIGINS SERIES HAND-CARVED DJEMBES

Carved from a single piece of environmentally-friendly plantation grown mahogany. Lathe turned for uniform thickness. Bowl interior features lathe grooves and rough-surfaced carvings to eliminate overtones. Hand selected goatskin heads.

MODEL	DESCRIPTION
<b>TODJ-7*</b>	7" Head, 12" Tall
<b>TODJ-8*</b>	8" Head, 16" Tall
<b>TODJ-10*</b>	10" Head, 20" Tall
<b>TODJ-12*</b>	12" Head, 24" Tall

\*Available Finishes: Celtic Knot (CK), Tribal Mask (TM), African Mask (AM), Earth Mother (EM), Lion = (LN)



EARTH MOTHER



CELTIC KNOT



LION



TRIBAL  
MASK



AFRICAN  
MASK

**Hand  
Carved  
Details!**

### DJEMBE HATS

Padded hat fits snug on top of djembe for added protection. Equipped with silver lining for added heat protection. Black cloth finish with Toca logo.

MODEL	DESCRIPTION
<b>TDHAT-10</b>	10" Djembe Hat
<b>TDHAT-12</b>	12" Djembe Hat
<b>TDHAT-13</b>	13" Djembe Hat



### DJEMBE BAG WITH SHOULDER HARNESS

Padded Bag for protection. Fully adjustable shoulder harness & side pocket. Harness is padded & features one touch clips. Bag & harness are sold together.

MODEL	DESCRIPTION
<b>TDBSK-10B</b>	10"
<b>TDBSK-12B</b>	12"
<b>TDBSK-13B</b>	13"
<b>TDBSK-14B</b>	14"



### DJEMBE KESSING

Made of lightweight aluminum. Snuggly fits between djembe ropes to give player added sounds.

MODEL	DESCRIPTION
<b>T-DKS</b>	Kessing Sound accessory



### PRO DJEMBE PADDED BAG

Bag features adjustable shoulder straps, hip belt and exterior pouches.

MODEL	DESCRIPTION
<b>T-DBG10</b>	10" Djembe Bag
<b>T-DBG12</b>	12" Djembe Bag
<b>T-DBG13</b>	13" Djembe Bag







*Tunable, Portable, Interchangeable!*



**New!**

- Tunable, Interchangeable Drums and Heads
- Innovative, & Optional,
- Proprietary, Internal Tuning Design
- Lightweight & easy to use
- No Bulky Hardware
- Fully Compatible with Freestyle II Nesting Drums





## SYMPATICO SERIES

\*\*Replacement heads in various styles are available for sale individually.

\*Available Finishes: Kente (K), Woodstock Purple (WP)

### SYMPATICO NESTING DJEMBES

Sympatico Nesting Djembes are unique, PVC drums similar to our freestyle djembes with an added feature; the drum heads - made from reinforced composite synthetic material for added durability, which can be removed & be played like a frame drum! Drums easily "nest" inside each other - ideal for storage and/or travel. Perfect for interactive drumming. Featuring three sizes: 8", 10", or 12" Heads. These drums are lightweight, always tuned, cleanable, nesting, space saving, weather-resistant and maintenance free.

\*\*Sold with PreTuned Synthetic Leader Head or Tunable Fiber Head.

MODEL	DESCRIPTION
TSSND-*FP	8", 10" or 12" Djembe with PreTuned Fiber Head
TSSND-*FT	8", 10" or 12" Djembe with Tunable Fiber Head
TSSND-3PC**	Set of Three

### SYMPATICO NESTING ASHIKO

Ideal for Educational market, Drum circles & Health & Wellness. Sound Chamber allows for drum to resonate while playing seated. Conical shaped drum. All Synthetic Shell equipped with synthetic head.

\*\*Sold with PreTuned Fiber Head

MODEL	DESCRIPTION
TSSNA-*FP	10" or 12" Ashiko with PreTuned Fiber Head
TSSNA-3PC**	12" Set of Three

### SYMPATICO NESTING TUBADORAS

Lightweight & durable PVC Body makes these drums less than half the weight of traditional hand percussion drums. The Sympatico heads are designed to integrate with our existing line of Freestyle II Drums. Stackable - ideal for storage and travel. Easy to clean Heads can be removed and played like hand drums. Available in three Sizes: 10", 12", 14".

\*\*Sold with Tunable Fiber or Synthetic Leather Head

MODEL	DESCRIPTION
TSSTB-*FT	10", 12" or 14" Tubadora with PreTuned Fiber Head
TSSTB-*SLT**	10", 12" or 14" Tubadora with Synthetic Leather Head

### SYMPATICO NESTING TOM-TOM DRUMS

Unique, PVC drums that sound similar to regular Tom-Toms with an added feature; the drum heads - made from reinforced composite synthetic material for added durability, can be removed & played like a frame drum! Drums easily "nest" inside each other - ideal for storage and/or travel. Perfect for interactive drumming. Three sizes: 12", 14", or 16" Heads. These drums are lightweight, always tuned, cleanable, nesting, space saving, weather-resistant and maintenance free. Mallets included.

\*\*Sold with PreTuned Fiber Head w/ Dot

MODEL	DESCRIPTION
TSSNT-*FDP	12", 14" or 16" Tom-Tom with PreTuned Head w/ Dot
TSSNT-3PC**	Set of Three



# SYMPATICO SERIES



**\*\*Replacement heads in various styles are available for sale individually.**

**\*Available Finishes: Kente (K), Woodstock Purple (WP)**

## SYMPATICO NESTING DJUN DJUNS

Unique, PVC drums similar to our freestyle djembes with an added feature; the drum heads - made from reinforced composite synthetic material for added durability, which can be removed & played like a frame drum! Drums easily "nest" inside each other - ideal for storage and/or travel. Perfect for interactive drumming. Available in three sizes: Small - 19"H with 12" Heads, Medium - 20"H with 14" Heads, or Large - 20.5" H with 16" Heads. These drums are lightweight, always tuned, cleanable, nesting, space saving, weather-resistant and maintenance free. Includes Matching Mallets, full back Harness Strap for playing while standing, marching and carrying ease.

**\*\*Sold with PreTuned Fiber Head w/Dot**

MODEL	DESCRIPTION
TSSNDD*-FDP	12", 14" or 16" Djun Djun w/ PreTuned Fiber Head w/Dot
TSSNDD-3PC*-*	Set of Three



## SYMPATICO GATHERING DRUMS

Sympatico Gathering Drums feature Pretuned Synthetic Leather Heads. Heads can be removed & played like hand drums. Lightweight & Durable PVC Body make them Less than half the weight of traditional hand percussion drums. Sympatico heads designed to integrate with our existing line of Freestyle II Drums. Easy to clean.

**\*\*Sold with PreTuned Synthetic Leader Head**

MODEL	DESCRIPTION
TSSGD-18*S-SLP	18" PreTuned Synthetic Leather Head, Short
TSSGD-18*T-SLP	18" PreTuned Synthetic Leather Head, Tall

**\*Available Finishes:**  
Kente (K),  
Woodstock Purple (WP)  
Lizard (LZ)



## SYMPATICO REPLACEMENT HEADS

Six different head models to choose from. Innovative, and proprietary, internal tuning design. Significantly lighter than traditional tuning systems. Easy to use. No extra bulky, heavy, hardware attached to the side of the drum - it's hidden inside. Integrate with Toca's existing line of Freestyle II Nesting Drums.

MODEL	DESCRIPTION
TP-TSSFDP**	Pretuned Fiber Head w/Dot (Sizes 12", 14", 16", 18")
TP-TSSFDT**	Tunable Fiber Head w/Dot (Sizes 12", 14", 16")
TP-TSSFP**	Pretuned Fiber Head (Sizes 8", 10", 12", 14", 18")
TP-TSSFT**	Tunable Fiber Head (Sizes 8", 10", 12", 14")
TP-TSSSLP**	Pretuned Synthetic Leather Head (Sizes: 10", 12", 14", 16", 18")
TP-TSSSLT**	Tunable Synthetic Leather Head (Sizes: 10", 12", 14", 16")







## EDUCATIONAL PERCUSSION

### FREESTYLE II TOM TOM DRUMS

The Freestyle II PVC Tom drums are 8" tall with a 9.5" synthetic head - made from reinforced composite material for added durability. The perfect drums for interactive drumming. These drums are lightweight, always tuned, cleanable, weather-resistant and maintenance free. Includes Matching Mallets.

MODEL	DESCRIPTION
TF2T-*	9.5" PVC Tom Tom Drum



Lizard (LZ)

### FREESTYLE II 6" DOUMBES

10" tall PVC shells with 6" synthetic heads. Easy to play and maintain. Lightweight & durable. Great for drum circles, therapy, and players of all ages.

MODEL	DESCRIPTION
TF2DK-6*	10" Tall Freestyle II PVC Doumbek, 6" Head



Blue (B)



Red (R)



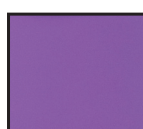
Green (G)



WoodStock  
Purple (WP)



Kente (K)



Purple (P)

### FREESTYLE BONGOS

6" Tall Durable PVC shells, synthetic heads, protective rubber/non-slip bottoms, lightweight, always tuned, cleanable, weather-resistant and maintenance free.

MODEL	DESCRIPTION
TF2B-*	5" & 6" Bongos

### JR. CAJONS

A great way to get kids started in music! The Maple tapa (playing surface) is slanted for easy playing. The body features bright colors. Measuring at 13 3/4" tall, This is the perfect size for early childhood learning.

MODEL	DESCRIPTION
TSFSC-*	Jr. Cajon, Wood

\*Available Finishes:

Red (RD), Blue (BL), Green (GN)





# WORLD PERCUSSION



## JAMAL DRUM SERIES

Designed in collaboration with doumbek Master Jamal Mohamed, The New Jamal Drum Series features 12" Mazar Drums with or without jingles, a 10" Riq (A Traditional, Middle-Eastern instrument similar to a tambourine), and three new Frame Drums with tuning system, adorned with Jamal's signature logo - sold individually or in a set of three. Constructed of Durable, Lightweight PVC with a Dark Red painted finish.



RIQ

MODEL	DESCRIPTION
<b>JMAZ-12</b>	12" Mazar Drum, Red PVC - no Jingles
<b>JMAZ-J12</b>	12" Mazar Drum, Red PVC - with Jingles
<b>JRIQ-10</b>	10" Riq, Red PVC with jingles
<b>JFD-10</b>	10" Jamal Series Tunable Frame Drum, Red PVC
<b>JFD-12</b>	12" Jamal Series Tunable Frame Drum, Red PVC
<b>JFD-14</b>	14" Jamal Series Tunable Frame Drum, Red PVC
<b>JFD-3PC</b>	3-Pc Jamal Series Tunable Frame Drums, Red PVC, (10", 12", & 14")



MAZAR DRUMS WITH AND WITHOUT JINGLES



TUNABLE FRAME DRUMS

## JAMAL SERIES DOUMBKEK

Designed in collaboration with doumbek Master Jamal Mohamed. Extremely durable, precision balanced shells. Toca's unique designs allows for deep douns & high teks. Innovative fiberglass body. Pretuned, (non replaceable). Hand painted.

MODEL	DESCRIPTION
<b>SJDKF-9S</b>	9.5"x16" Sm
<b>SJDKF-10S</b>	10"x18.25" Med
<b>SJDKF-12S</b>	11"x20.75" Lrg



## TUNABLE PANDIEROS WITH PLATINELLAS

A quintessential Brazilian percussion instrument gaining popularity beyond its traditional roots, and becoming the new must have for percussionists. The new, sturdy pandieros are affordable enough that you can add some authentic Brazilian spice to your music without breaking the bank.

Toca's New 10" & 12" Pandieros feature synthetic heads, 2-Ply Siam Oak Shells, Tunable Hardware, and Chrome plated Steel Platinellas (Jingles). Tuning wrench Included.

## JAMAL SERIES DOUMBKEK BAG

Black padded nylon bag protects drum. Zippered top, external pocket, lined bag with shoulder strap. Can hold doumbeks up to 10" width and 16" length. Features embroidered logo.

MODEL	DESCRIPTION
<b>T-JDBG</b>	Padded Doumbek Bag



MODEL	DESCRIPTION
<b>TPD10</b>	10" Pandiero, w/ Chrome Plated Steel platinellas
<b>TPD12</b>	12" Pandiero, w/ Chrome Plated Steel platinellas



# WORLD PERCUSSION

## 12" FREESTYLE ASHIKO, KENTE FINISH

Ideal for Educational market, Drum circles and Health and Wellness. Sound Chamber allows for drum to resonate while playing seated. Conical shaped drum. All Synthetic Shell equipped with synthetic head. Kente finish.

MODEL	DESCRIPTION
TFA-12MK	Mech. tuned
TFA-12RK	Rope tuned



## FREESTYLE KLONG YAO DRUM

This drum was designed after the traditional Thai drum. Its goblet shape produces deep bass tones and well-balanced high tones. It is traditionally used for ceremonies, festivals and drum circles. Equipped with a 12" synthetic head – it will not stretch or lose its pitch. Fully adjustable padded shoulder strap. Low-stretch Alpine rope with braided cores. Synthetic shell with a red marble finish.

MODEL	DESCRIPTION
SFKD-12R	12" Head, 31 3/4" H



## FREESTYLE DOUMBES

The mechanically tuned Doumbes have a fiberglass rim with 8 tuning screws. Available in two finishes: Aztec Blue (AB) or African Dance (AD). The pretuned Doumbek is only available in Bali Red (RP).

MODEL	DESCRIPTION
SFMTDK-9AB	9" Head, 18" Tall, Aztec Blue
SFMTDK-9AD	9" Head, 18" Tall, African Dance
SFDK-9RP	9" Head, 18" Tall, (Pretuned) Bali Red



BLUE AZTEC



AFRICAN DANCE



BALI RED

# WORLD PERCUSSION



## BATA DRUMS

Long shell section produces unmatched bottom end. Shorter shell section enhances high end tones. Traditional, Bright Red finish. Matched bison heads. Three sizes available.

MODEL	DESCRIPTION
3308	Oconcolo – Sm., 5" & 7" Heads, 22"H
3309	Omele – Med., 5½" & 8½" Heads, 26"H
3310	Iya – Lg., 7" & 12" Heads, 29"H



## FREESTYLE DJUN DJUNS WITH MALLET

Outstanding melody, design and various authentic African tone. Drum body is constructed of synthetic material 3 sizes, sold separately. Real calf skin heads produce heavy tones and eliminate ringing overtones. Mallets included.

MODEL	DESCRIPTION
SFDD-10AM	10" Kenkeni – High Tone
SFDD-12AM	12" Sangban – Mid-Range Tone
SFDD-15AM	15" Dundunba – Deep Base Tone



## FREESTYLE TALKING DRUM WITH BEATER

Drum changes in pitch by squeezing and releasing the cords while playing. Extremely lightweight and durable synthetic shell. Authentic goatskin heads. Beater included. Finished in African Mask design.

MODEL	DESCRIPTION
T-TLKD	7" Heads, 16" Tall



## PROFESSIONAL CUICA

Lightweight aluminum shell with Black powder coated hardware. Natural goatskin head. Shoulder strap and tuning wrench included.

MODEL	DESCRIPTION
T2548	10" Head, 11" Tall



## PROFESSIONAL TAMBORA

Two-ply Asian Oak wood. Low profile. Traditional rims & top quality bison heads. Natural finish. Shoulder strap & beater included.

MODEL	DESCRIPTION
TTAM-N	11" Heads, 14" Tall





# CAJONS

## BASS REFLEX CAJONS

### EXTENDED RANGE CAJON TOCA LOGO

This cajon has larger dimensions, offering a broad tonal spectrum and dynamic range. The patented bass reflex design produces enhanced bass response. This model features Adjustable Flamenco-style snares and finished with an Eye-catching Toca Logo design.

MODEL	DESCRIPTION
<b>TCAJER-TL</b>	Bass Reflex Cajon - Toca Logo Design

### EXTENDED RANGE CAJON TIGER MASK

The larger dimensions of this cajon offers a bigger tonal spectrum and broader dynamic range than a standard sized cajon. Bass response is even further enhanced & extended by Toca's bass reflex design. Flamenco-style snares are adjustable. 19.5" x 14" x 11.5".

MODEL	DESCRIPTION
<b>TCAJER-TM</b>	Extended Range Cajon, 8-string, Tiger Mask

### FLAMINCO CAJON MAHOGANY

A marriage of two great traditions - Spanish Flamenco and Afro-Peruvian music. This cajon reflects the elegant simplicity of the fixed-snare flamenco cajon.

MODEL	DESCRIPTION
<b>TCAJF-M</b>	Flamenco Cajon, Mahogany

### CORNER ACCENT CAJON

A new joinery technique yields this attractive, sturdy flamenco cajon. Made from plywood with adjustable flamenco-style snares and Toca's bass reflex system, this cajon sounds as good as it looks!

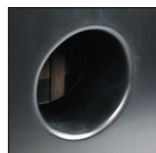
MODEL	DESCRIPTION
<b>TCAJCA-M</b>	Corner Accent Cajon, Natural/Dark Walnut

### THE WORKHORSE CAJON

Solid, dependable, durable. Toca Workhorse Cajons get the job done with a surprising touch of grace. Sturdy MDF body has greater density & less give than plywood. Its construction, paired with Toca's bass reflex design, yields a refined timbre with depth, clarity & dynamic range that rivals other cajons that cost twice as much.

MODEL	DESCRIPTION
<b>TCAJWH-DW</b>	Workhorse Cajon, Dark Walnut
<b>TCAJWH-M</b>	Workhorse Cajon, Mahogany

Toca Bass Reflex Cajons incorporate a patented, built-in resonant system. Following the same principals widely used on loud-speakers, each cajon in this group features an internal tube tuned to the cabinet of each cajon. This design enhances & extends the low-end response of the cajon and increases overall volume.



EXTENDED RANGE  
CAJON  
TOCA LOGO



EXTENDED RANGE  
CAJON  
TIGER MASK



FLAMINCO  
CAJON



CORNER  
ACCENT CAJON



THE WORKHORSE  
CAJON (WALNUT)



### BASS REFLEX BONGO CAJON

Sturdy Mahogany plywood shell and musical tapa. The sound chamber is divided in two, the macho and hembra chambers. The macho chamber is sealed which raises pitch, improves slap response and adds overtones for more cut. Using the same bass reflex technology found in our most popular cajons, the hembra chamber is closed and ported. The port is tuned precisely to extend frequency range and increase projection.

MODEL	DESCRIPTION
<b>TB6CAJ</b>	Bass Reflex Bongo Cajon



# CAJONS



## COLORSOUND WOOD CAJON

All wood construction with Para wood front plate. Two internal snare wires for crisp sound. 17" H x 11" W x 11" D. Great for beginners.

Available Colors: RD = Red, BL = Blue, GN = Green, WH = White, PK = Pink

MODEL

TCCJ-\* Colorsound Cajon



## WOOD CAJON WITH ASH FRONT PLATE

North American Ash wood front plate. Siam oak body. Fixed internal snares. Padded seat surface. 20½" H, 12½" W, 13" D

MODEL

TCAJ-ASH

## PLAYER'S SERIES WOOD CAJON

All wood construction & internal snare wires. Beginner cajon with professional sound. Rubber feet. 11½"W, 17½"H, 11½"D.

MODEL

TCAJ-PN



## JR. CAJONS

A great way to get kids started in music! The Maple tapa (playing surface) is slanted for easy playing. The body features bright colors. Measuring at 13 ¾" tall, This is the perfect size for early childhood learning.

MODEL

TSFSC-\* Jr. Cajon, Wood

\*Available Finishes: Red (RD), Blue (BL), Green (GN)

## TRIPLE CONGA CAJON W/ STAND

Wood top construction. Fiberglass bowl shape. Creates 3 sounds similar to three conga drums – high, mid, low. Height adjustable stand included. Ideal for acoustic gigs.

MODEL

T-TCC Triple Conga Cajon with Stand



TRIPLE CONGA CAJON



SNARE CONGA CAJON

## SNARE CONGA CAJON

Fiberglass bowl with thin, responsive tone wood layer, split into two chambers. Large chamber produces deep conga tone. Small chamber with snare gives distinct treble sound of a Cajon's front plate. Great for tight setups. Sits in lightweight, height-adjustable stand and packs easily into padded carrying case.

MODEL

T-SCC Snare Conga Cajon



Flip, to alternate playing Snare or Bongo Cajon

## BONGO FLIP-CAJON

A multi-purpose, multi-sided instrument. It's a bongo cajon that flips over to a snare cajon. Featuring fixed internal snares, and a lap strap for secure playing. Size: 14-1/2" X 8" X 6-1/2"

MODEL

T-BFC Bongo Flip-Cajon



# KICKBOXX

## KICKBOXX SUITCASE DRUM SET

The Kickboxx Suitcase is a drum set with a Kick, Snare and Tom, plus room for your favorite kick pedal. The Kickbox acts as a carrying case for the entire set. Packed up, it's small enough to fit in most airline overhead compartments. It features a 14" Bass Drumhead, 10" snare (with throw-off), 10" tom, and 3 retractable accessory posts (2 in the front & 1 in the back). Additional accessories can be mounted by attaching accessory clamps to the handle.

MODEL	DESCRIPTION
<b>TKSDS</b>	Kickboxx Suitcase Drum Set

Add-ons:

<b>TAUX10</b>	10" Aux. Drum w/ Mount (for 3/8" Post)
<b>TAUX10-SN</b>	10" Aux. Drum w/ Snare & Mount (for 3/8" Post)



## DUAL POST U-ROD ACCESSORY CLAMP

Two 3/8" diameter posts, in two lengths on one end and an adjustable stand clamp on the other end. This clamp is great for mounting two accessories together at different heights. Perfect for use with the Toca Kickboxx

MODEL	DESCRIPTION
<b>TDPAC</b>	Dual Post U-Rod Accessory Clamp

**NEW!**



# DRUMSET ADD-ONS



## ACRYLIC MINI TIMBALES

Excellent add-on to any existing drumset or percussion set-ups. Two sizes, 6" and 8" (sold separately), mounts to any 3/8" rod. Delivers excellent crisp highs. Rubber Bottom.

MODEL	DESCRIPTION
T-40BAS	8" Black Smoke
T-40BAS	6" Black Smoke



**NEW!**

## JINGLE SNAPT™

Innovative accessory adds a jingle sound to a drummer's backbeat with precision & control. Keep that jingle sound close & hit it whenever it's needed. This stickable jingle provides a precise accent only when needed, because it's mounted directly to the snare instead of a constantly moving hi-hat. This small accessory packs a big or quiet jingle. Fits on any acoustic drum, & features four nickel-plated steel jingles. Black powder-coated metal frame ensures durability & long-lasting use.

MODEL	DESCRIPTION
T-JS	Jingle Snap



## JINGLE SNARE

Tambourine and snare combination. Wood construction. Gibraltar dual post mount. Double-row nickel plated jingles produce bright sounds. Cowbell not included.

MODEL	DESCRIPTION
TD-JSPKG1	10" Head



## JINGLE-HIT TAMBOURINES

6-ply wood construction. Rubber playing surface can be played by drumstick or hand. Gibraltar dual post mount. Double-row nickel plated jingles that produce bright sounds. Cowbell not included.

MODEL	DESCRIPTION
TD-JHMT1	6" Marine Pearl



## HI-HAT "HIT-ZONE" TAMBOURINE

Rubber "Hit Zones" allow the drummer to create a different strike with a drumstick while keeping rhythm on the hi-hat. 10 rows of nickel plated jingles create bright sounds ideal for any music application. 6 3/4" black powder coated metal round frame.

MODEL	DESCRIPTION
T-HH2T	



## QUICK CHANGE MOUNT

Innovative steel clamp that transforms from a cymbal holder to a percussion rack.

MODEL	DESCRIPTION
T-QCM	Quick Change Mount



## DRUM SET TIMBALE WITH SNARES

These innovative new instruments provide drummers with an expanded range of sound options, and are perfect for drummers looking to add new elements to their music. The first 12" x 4" model, features a stunning stainless steel finish. The smaller head size makes it easy to place in tighter spaces, & the steel shells provide maximum sustain, brightness, & clarity. Equipped with a snare, it enables drummers to easily transition from a unique timbale sound to a snappy snare sound. The second 12" x 7" model, boasts all the same features as its smaller counterpart, but with a deeper ring and a stunning hand-hammered stainless-steel finish that's sure to dazzle audiences. Both drum set timbales come with a heavy-duty mount that accommodates a variety of rods & tom holders, making them easy to place on any drum set.

MODEL	DESCRIPTION
T-712-HH	12" Hand Hammered - 7" Shell Depth
T-412-SS	12" Stainless Steel - 4" Shell Depth



## TAMBOURINE WITH EASY PLACE MOUNT

Unique bracket easily converts from mounted to handheld in seconds. Plastic edge for added stick protection. Nickel plated jingles. Black, ABS plastic.

MODEL	DESCRIPTION
T-2603	



## FRAMEDRUMS/TAMBOURINES

### FRAME DRUMS

Sold individually and in sets of 3 and 5. Sizes 6", 8", 10", 12" and 14". 3-Pk consists of 8", 10", 12". The 5-Pk consists of 6", 8", 10", 12" and 14". Ideal for early childhood education 3 pack and 5 pack come with padded carrying bag.

MODEL	DESCRIPTION
TFD-3PK	3 pk with bag
TFD-5PK	5 pk with bag
TFD-6	6" drum
TFD-8	8" drum
TFD-10	10" drum
TFD-12	12" drum
TFD-14	14" drum



Check Out The Jamal Series Frame Drums on Pg 18.



### LIGHTWEIGHT TAMBOURINE

Lightweight and comfortable feel. 10" Aluminum Frame with 2 rows of double, nickel plated jingles. Great for all styles of music.

MODEL	DESCRIPTION
T2502	10" Lightweight Tambourine



### COLORSOUND TAMBOURINES

A spectrum of 10" painted tambourines that fit any musician's style. Lightweight exotic Acacia hardwood. Nickel plated and Brass plated double row jingles. Jingle combination balances sound, projecting dry and lively sounds. Available in Blue (BL), Green (GN), Pink (PK), Red (RD), Black (BK) and White (WH).

MODEL	DESCRIPTION
TCT10*	10" 8 Double Row Nickel/Brass Jingles



### HALF MOON BLACK TAMBOURINE

8 rows of double nickel plated jingles. Durable plastic construction. Ideal for live performances.

MODEL
T-2602



### ACACIA TAMBOURINES

Acacia hardwood. Brass jingles for dry sound. Nickel jingles for lively sounds. Combo jingles produce a balanced sound. Ergonomical handle.

MODEL	DESCRIPTION
T1010-A	10" 8 Double Row Nickel Jingles
T1010-AB	10" 8 Double Row Brass Jingles
T1010-ABC	10" 8 Double Row Nickel/Brass Jingles



### SINGLE ROW TAMBOURINE

Extremely articulate, perfect for recording or gigging Exotic Acacia hardwood & 8 rows of single Nickel/Brass combo jingles produce a balanced sound. Dark wood satin matte finish. Ergonomically tapered handle.

MODEL
T1010D



### BEST SELLERS!



### SUPERTONE TAMBOURINE

10" PVC Shell Tambourine. 8 rows of double nickel plated jingles. Lightweight and extremely durable.

MODEL
T-2500



### PLAYER'S SERIES WOOD TAMBOURINES

Wooden frame with nickel jingles and optional pre-stretched natural skin heads

MODEL	DESCRIPTION
T1075	7 1/2" Wood Tambourine, Single Row
T1090	9" Wood Tambourine, Double Row
T1010	10" Wood Tambourine, Double Row
T1075H	7 1/2" w/Head, Single Row
T1090H	9" w/Head, Double Row
T1010H	10" w/Head, Double Row





# COWBELLS



## PRO LINE COWBELLS

State-of-the-art hammering process. Bells deliver excellent tones and sustain. Tight Grip Mount System, a unique mounting system that allows the bell to be pivoted for multiple placement variations and set-ups. Black Copper.

MODEL	DESCRIPTION
TPC-1BC	High Rut
TPC-2BC	Low Rut
TPC-4BC	Groove Bell
TPC-5BC	Mega Bell
TPC-6BC	XXL Bell



## PRO LINE HYBRID HANDHELD COWBELL

Unique Handheld Hybrid Bell has dual surfaces – hammered and flat.

MODEL	DESCRIPTION
TPC-3BL	Blk Mirror, High Pitch



## HANDHELD AGOGO BELLS

Crafted from premium steel. Variety of different tones and sounds. Handheld. Chrome finish.

MODEL	DESCRIPTION
4330T	Chrome



## COWBELL BEATER

Matte finished Maka hardwood with Ribbed handle. 2 surfaces, rubber and wood.

MODEL
T-DCB

## NUYORICAN - ERIC VELEZ SIGNATURE COWBELLS

Island Salsa... New York style.

Designed in conjunction with renowned percussionist, Eric Velez, to compliment his signature series timbales. The Nuyorican bells fuse the sounds of Puerto Rican & New York percussion scenes. Whether you play Latin Pop, Modern Salsa or just want to add a Latin flair to your sound, these bells are just right for the job. Steel bells finished in Black Mirror chrome.



4925-NB 5" Cha-Cha Bell, 3-3/4" mouth, Chrome Plated

4926-NB 7" Mambo Bell, 5 3/4" mouth, Chrome Plated



## FUSION BELLS

Crafted from premium steel. Three different sized cowbells attached together. Three distinct sounds. White powder coat finish.

MODEL
4354-T

## PLAYER'S SERIES COWBELLS

Improved full-side seam weld. Black powder coat finish. Eyebolt assembly.

MODEL	DESCRIPTION
3325-T	5 3/4" Tall
3326-T	6-7/8" Tall

## CONTEMPORARY BELLS

Improved full-side seam weld. White powder coat finish. Crafted from premium steel. Variety of different tones and sounds. Unique tone dampening process.

MODEL	DESCRIPTION
4424-T	Hi Cha Cha
4425-T	Low Cha Cha
4426-T	Bongo Bell
4427-T	Mambo Bell
4428-T	Timbale Bell





## DIDGERIDOOS



### BAMBOO DIDGERIDOO

Natural Bamboo didgeridoo with Melamine Doff finishing.

MODEL	DESCRIPTION
-------	-------------

DIDG-PNAT	
-----------	--



### BAMBOO DIDGERIDOOS

Hand crafted and hand painted. 47" long with wax mouth piece. Carry bag included. Finishes: Turtle, Kangaroo, Gecko.

MODEL	DESCRIPTION
DIDG-PT	Turtle (Bottom Photo)
DIDG-PK	Kangaroo (Middle Photo)
DIDG-PG	Gecko (Top photo)



### DURO DIDGERIDOOS

Lightweight synthetic construction. Extremely durable. Nice tonal qualities. 56" model's large horn produces optimal bass.

MODEL	DESCRIPTION
DIDG-DUOSM	48"
DIDG-DUOLG	51"
DIDG-DOS	49" Orange Swirl
DIDG-DGSH	56" Green Swirl

### CURVED DIDGERIDOOS

Hand painted, lightweight and durable synthetic shell. Curved design represents a traditional style didgeridoo.

Finishes: Sahara Gecko (CG), Tribal Sun (CTS).



MODEL	DESCRIPTION
DIDG-( )	



### DIDGERIDOO DISPLAY STAND

MODEL	DESCRIPTION
DIDG-NDS	Holds 6 Didgeridoo



## SMALL HAND PERCUSSION

### COCONUT SHEKERE

Wood construction. Coconut Shell with small plastic beads.

MODEL	DESCRIPTION
T-CSGB	Plastic Beads



### PRO FIBERGLASS SHEKERES

Handmade durable fiberglass shells. Hand-strung beads. Protective rubber ring on mouth of the Shekere. Black or natural Gourd Finish

MODEL	DESCRIPTION
T2151B	Fiberglass, Black
T2151G	Fiberglass, Natural Gourd



# SMALL HAND PERCUSSION



## TOCA & PLAYERS SERIES ROUND WHITE PVC SHAKERS

Toca Shakers are ideal for studio work, Players Series shakers are great for Live performances. Full rounded sound, Durable plastic shell.

MODEL	DESCRIPTION
T2005	5" Long, Toca - Studio
T2008	8" Long, Toca - Studio
T3106	6" Long, Players Series - Live
T3108	8" Long, Players Series - Live
T3110	10" Long, Players Series - Live



## ALUMINUM SHAKERS SQUARE-WHITE

Square shape allows for unique shaker sound. Great for live performances.

MODEL	DESCRIPTION
T-2204	4" Long
T-2208	8" Long



## BAMBOO TUBE SHAKERS

Bamboo tube shakers with natural rawhide heads. The pitch can be altered by playing the shaker freely or by gently pressing on the heads.

MODEL	DESCRIPTION
T-BSS	Small
T-BSM	Medium
T-BSL	Large



## NATURAL SHAKERS

Designed in collaboration with studio percussionist Doug Hinrichs. Constructed of natural rawhide material with rawhide fill inside of the shaker. Ideal for studio recordings and unplugged performances. Create rhythmic patterns while playing both shakers in your hands.

MODEL	DESCRIPTION
T-NSP	4½" & 6½" Shakers



## ALUMINUM SHAKERS ROUND-BLACK

Three sizes. Ideal for studio and live performances. Soft well-balanced sound.

MODEL	DESCRIPTION
T2102	5" Long
T2100	8" Long
T2101	12" Long



## FREESTYLE II PVC SHAKERS

Toca's New Freestyle II PVC Shakers have durable Synthetic Shells with brightly colored Finishes. Each Shaker produces different tones: Small (High/Light), Medium (Moderate), and Large (Heavy/Deep). Great sound effect for any player to have.

MODEL	DESCRIPTION
TF2S-S**	Small, PVC Shaker
TF2S-M**	Medium, PVC Shaker
TF2S-L**	Large, PVC Shaker



Finishes:

Kente (K),  
Woodstock Purple (WP),  
Bali Red (RP)

## ROUND WOOD SHAKER

6 inch round natural wood shaker.

MODEL	DESCRIPTION
T-2206	6" Long



## SYMPATIKA SHAKER

Round wood shakers connected with rope. Creates soft shaker sounds. Lightweight and durable. Create unlimited sounds. Equipped w/ Alpine low stretch rope.

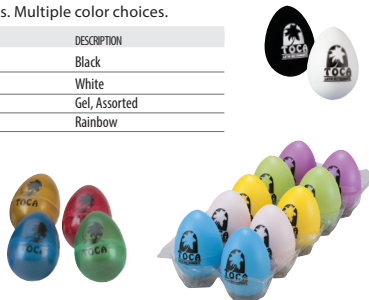
MODEL	DESCRIPTION
TSS-N	



## EGG SHAKERS

Sold in a pack of 10. Unlimited rhythm sounds. Multiple color choices.

MODEL	DESCRIPTION
T-2107	Black
T-2105	White
T-2104	Gel, Assorted
T-2106	Rainbow







## SMALL HAND PERCUSSION

### WOOD RATTLE ON STRING

Siam oak pods on string create waterfall-like sound effect. Eccentric sound effect ideal for Health and Wellness market.

MODEL  
T-WRS



### WOOD RATTLE WITH HANDLE

Great add-on for any drummer and percussionist in acoustic setup or studio. Siam oak pods are individually tied by hand. Unique sound effect ideal for Health and Wellness market.

MODEL  
T-WRH



### WOOD RATTLE FOR ANKLE/WRIST

Great add-on for anyone playing cajon, djembe, guitar and dancers. Elastic band securely fits onto any wrist or ankle. Ideal for Health and Wellness market.

MODEL  
T-WRA



### RATTAN BALL SHAKER ON STICK

Soft sound. Resembles rattle snake sound when played.

MODEL  
T-BRS



### SEED SHELL SHAKER

Natural seed pods. Unlimited musical sounds.

MODEL  
T-SS



### CAXIXI

Closed basket with flat plastic bottom. Lively sounds.

MODEL	DESCRIPTION
T2543	Small
T2544	Large



### PAINTED WOOD MARACAS

Hand made from selected hardwood. Well-balanced sound. Beautiful hand painted design on each maraca.

MODEL  
T3132



### SUPERTONE MARACAS

Ideal for live performances. Plastic shell w/ wooden handle.

MODEL  
T2110



### MARACAS

Create lively tones and rhythms. Durable plastic shell.

MODEL	DESCRIPTION
T3130	Small Maracas
T3131	Large Maracas

### MINI COCONUT MARACAS

Coconut shell. Warm sound ideal for acoustic performances.

MODEL  
T-MCM



### TWO TONE WOOD BLOCKS

Combination of high and low tones. Wood construction. Includes beater

MODEL  
T-2111



### PLAYER'S SERIES WOOD BLOCKS

Made of hardwood. Mallet included.

MODEL	DESCRIPTION
T-3505	Soprano
T-3506	Alto



# SMALL HAND PERCUSSION



## CASTANET MACHINE

Wood base construction. Ebony castanets. Equipped with mount.

MODEL  
T2300



## PRO CLAVES

Hand selected Paduak wood. Projects warm and lively sound when struck together. Great for studio and live applications. One clave features a sound chamber that allows you to adjust the pitch when struck together. 9" Long Clave. 7-3/8" Long Striker.

MODEL  
T3513



## PALM WOOD CLAVES

Made from hand selected Palm hardwood. Well-balanced sound, ideal for studio recording & live performances. 8" Long x 1-1/8" Wide.

MODEL  
T-2512P



## ROSEWOOD CLAVES

Made of durable Rosewood. Produces loud clave sound ideal for big bands.

MODEL  
T-2512



## PLAYER'S SERIES CLAVES

Hardwood construction. Finished in black stain. Ideal for beginners.

MODEL  
T3512



## WOOD RATCHET

Wood construction. Nice sound effect for any percussionist.

MODEL  
T-WR



## RATCHET

Ideal for any musical application. Loud response and durable.

MODEL  
T2520



## TOCALIMBA THUMB PIANOS

9 Steel plated keys. Small is constructed of solid natural Ashwood. Large is constructed of Asian Oak with a walnut matte finish. Large version has hollow body and features sound chambers and wah-wah effect.

MODEL	DESCRIPTION
T-THPS	Small
T-THPL	Large



## COCONUT KALIMBA

Made of coconut shell 7 notes allows the player to create different sounds.

MODEL  
T-CK

## SURF DRUM

Play in a circular motion to create the sounds of waves crashing. Made of a highly durable synthetic shell. Synthetic heads on both sides. End cap allows you to adjust the inside fill. 13/4" Height x 14" Wide.

MODEL  
T-SURF



## BAMBOO GUIROS

Made of Bamboo. Three different güiro sound to choose from. Comes with striker.

MODEL	DESCRIPTION
T-MBG	Mini
T-SBG	Small
T-LBG	Large



## SYNTHETIC GUIRO

Fiberglass construction. Comes with beater. Beautifully high pitched for live performances. 13.5 x 5.5"

MODEL  
T2526W



## RIBBIT FROG

Resembles frog sound when played with striker. Wood - 5".

MODEL  
T-FROG



## GECKO WOODEN CLACKER

Made of wood construction. Nice addition for any percussionist. Part of the Sound Effects series. Features a wooden gecko design for each handle.

MODEL  
T-GC





## SMALL HAND PERCUSSION

### SLAPSTICK

Made of hardwood construction.  
Resembles a slap sound when struck together.

MODEL  
T-2501

### RATTLER

Resembles rattle-like sound when struck.

MODEL  
T-2511

### FINGER CYMBALS

Well-balanced sound.  
Brass plated.

MODEL  
T-2530

### TRIANGLES

Chrome plated, with beater.  
Lively sustains.

MODEL DESCRIPTION

T2508 6" Bossa

T2508 10" Samba

T-TRI5 5" w/

Striker

T-TRI8 8" w/

Striker

### SLEIGH BELLS

Beautiful Holiday sound throughout the year. Wooden handle. 24 Bells.

MODEL  
T-2531



### TONE BARS WITH Mallet

Aluminum alloy bars suspended by string.  
Includes wood mallet.

MODEL DESCRIPTION

T-TONE3 3 Bars with mallet

T-TONE5 5 Bars with mallet

### DREAM CHIMES

Hollow chimes. Pleasant sound when played. Nice sustain.

MODEL DESCRIPTION  
T-DC Hollow 26 Bar Dream Chimes



### BAMBOO RAINSTICKS

Made of Bamboo. Choice of natural finish or beautiful hand-applied artwork. Resembles the sound of falling rain.

MODEL DESCRIPTION

T-RAIN24 Rainstick 24" Long with Hand-applied artwork

T-RAIN39 Rainstick 39" Long with Hand-applied artwork

T-RAIN24N Rainstick 24" Long - Natural finish

T-RAIN39N Rainstick 39" Long - Natural finish



### FREESTYLE SERIES RAINSTICKS

Resembles the sound of falling rain. Hand painted.  
Extremely lightweight and durable synthetic shell.

MODEL DESCRIPTION

T-RAIN39B Rainstick, Boa Snake 39" Long

T-RAIN39S Rainstick, Santa Fe 39" Long



### JR. RAINSTICK

Resembles the sound of falling rain. Compact size for squeezing into tight setups. Extremely lightweight and durable synthetic shell. 18" Long.

MODEL  
T-RAINJR



### SPECTRASOUND™ MARKTREE CHIMES

These chimes have a solid hardwood mantle and 35 Aluminum Bars with super-strong filament. Hand tied filament allows true resonance. They produce microtonal shimmer unlike any other chime set. Damper Bar, Soft Bag and Hard Case Sold Separately. Natural and/or Black Aluminum options



MODEL DESCRIPTION

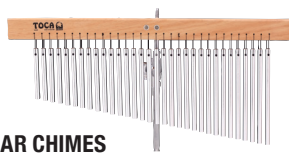
SM-35BA 35-Bar Chimes, Black Aluminum

SM-35NA 35-Bar Chimes, Natural Aluminum

SM-35ZA 35-Bar Chimes, Black & Natural Aluminum

SM-DB35 Damper Bar

SM-SB35 Soft Chime Bag



### UNIVERSAL BAR CHIMES

Full body sound. Ideal for live gigs. 32 solid aluminum alloy bars.

MODEL DESCRIPTION

T-2304 Universal Bar Chimes



# STANDS



## MULTI-USE BONGO STAND

A versatile & durable stand combining the functionality of seated bongo stands & bongo arms into one. The Multi-Use Bongo Stand allows musicians to play bongos while seated on a throne or attach them to a double conga stand. With its C-Clamp bongo mount & adjustable height & angle, it's fully customizable to meet any playing style. Designed to fit any double conga stand, this stand is built to last. Add extra bongos to your set, without taking up floor space. An ideal add-on for any drummer or percussionist.

MODEL	DESCRIPTION
<b>TMBS</b>	Multi-use Bongo Stand



## CAJON STAND

Heavy-duty, Black powder coated mounting system with height adjustable Chrome stand. Easily adjusts to fit most cajons and securely holds cajon in place for playing ease. Perfect addition to any drum set up, It also enables you to stand while playing! Holds any cajon up to 15.5" wide and 22.5" tall.

MODEL	DESCRIPTION
<b>T-CAJSTD</b>	Toca Cajon Stand



## SMALL PERCUSSION TRAY STAND-MOUNTABLE

This small and mountable, Black Percussion Tray is compact & perfect for tight places. Capable of holding multiple handheld accessories such as Shakers, Cowbells, and Tambourines. Easily mount the percussion tray to most stands. The tray features a textured liner and raised edge to protect accessories from falling off.

MODEL	DESCRIPTION
<b>T-TRAY-SM</b>	Small Stand-Mountable Percussion Tray



## PERCUSSION TRAY TABLE

Great for holding Multiple percussion accessories such as Shakers, Cowbells, Tambourines and even Bongos! Includes fully adjustable stand w/ Double braced legs. Perfect for any drumset player.

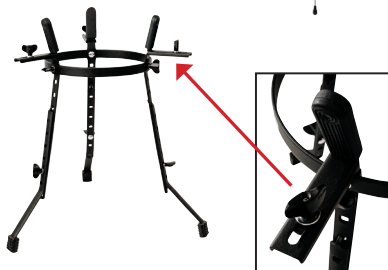
MODEL	DESCRIPTION
<b>T-TRAY</b>	Percussion Tray Table with Stand



## MULTI-PURPOSE PERCUSSION STAND

Accommodate multiple types & sizes of world percussion instruments, from congas & djembes to doumbeks & beyond, the Multipurpose Basket Stand provides superb versatility. Each leg can be individually adjusted allowing for seated, standing or tilted positions. Three-way adjustable basket accommodates the most popular drum sizes as well as odd shapes. Durable black powder coat finish. Tool-free assembly & disassembly - 2 minutes or less for quick set-up and strike.

MODEL	DESCRIPTION
<b>3800</b>	Multi-Purpose Basket Stand





## STANDS

### LOW RIDER SEATED BONGO STAND

Fits all bongos. Fully adjustable with Double braced legs. Perfect for any drumset player.

MODEL  
TSBST



### BONGO STAND ATTACHMENT

Fits most double conga stands. C-clamp bongo mount. Height & angle adjustments.

MODEL  
TBSA



### PLAYER'S SERIES DOUBLE CONGA STAND

Chrome and black finish. Height adjustable. L-bracket mounts.

MODEL  
PSDCS



### SYNERGY DOUBLE CONGA STAND

Black Powder -Coated & Chrome. Height adjustable. L-bracket mounts. Tripod legs with Rubber Feet

MODEL  
TSDCS



### PRO BONGO STAND

Heavy-duty all-chrome stand. Hinged height adjustment. C-clamp style bongo mount.

MODEL  
TPBS



### PLAYER'S SERIES BONGO STAND

Chrome and black finish. Hinged height adjustment. C-clamp style bongo mount.

MODEL  
PSBS



### PRO BONGO STAND WITH ADJUSTABLE STABILIZER BARS

Heavy-duty tripod stand. Fully adjustable stabilizer bars. Chrome Plated double braced hardware. U-Clamp device fits onto any bongo center block.

MODEL  
TPBS-N

### SYNERGY BONGO STAND

Heavy-duty Black powder-coated stand. C-Clamp bongo mount. fits most bongo center blocks.

MODEL  
TSBS



# STANDS



## PRO DOUBLE CONGA STAND

Heavy-Duty, Height adjustable Chrome Stand. Double braced base with Rubber feet.

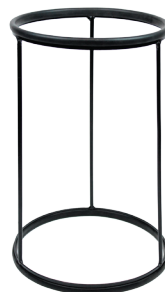
MODEL  
T3111STD



## LIGHTWEIGHT PERCUSSION STAND

Solid, Black Powder-Coated Chrome Stand. Holds Congas, Djembes, Doumbeks. Stand is 12" in diameter. Cushioned rubber Top ring prevents shell damage.

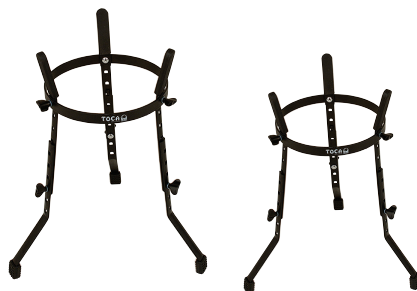
MODEL DESCRIPTION  
TLPS Lightweight Percussion Stand



## CONGA BARREL STAND WITH COLLAPSIBLE LEGS

Fully adjustable stand, fits all congas. Fully adjustable legs and rubber grippers. Equipped with collapsible legs for easy set-up and tear down. Chrome hardware.

MODEL  
TCBS-C Collapsible Conga Barrel Stand  
TCBS Conga Barrel Stand (non-collapsible)



## PRO DJEMBE STAND

Fully adjustable stand securely holds any djembe in a traditional or angled position. Equipped with 2 adjustable nylon straps. Adjustable sliding C-clamp firmly sits on the neck of the drum. Chrome steel construction with tripod base. Memory clamp.

MODEL  
TDJS



## CONGA BASKET STANDS

Height adjustable with adjustable drum basket. Fits doumbeks, udu drums and djembes up to 12" in diameter. Cushioned rubber basket ring prevents shell damage. Tripod base. Chrome hardware.

MODEL DESCRIPTION  
3700-SN Small, 10" & 11"  
3700-LN Large, 11 1/4" & 12 1/2"



## WORLD PERCUSSION ADJUSTABLE STAND

Height adjustable with adjustable drum basket. Fits doumbeks, udu drums and djembes up to 12" in diameter. Cushioned rubber basket ring prevents shell damage. Tripod base. Chrome hardware.

MODEL  
TDKS



## 3600 SERIES SEATED BARREL STANDS

Metal construction. Black powder coated finish. Ideal for seated players.

MODEL DESCRIPTION  
3610STD 10"  
3611STD 11"  
3611STD3/4 11 3/4"  
3612STD 12 1/2"

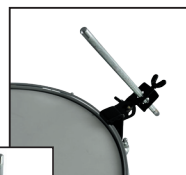




## MOUNTS



**NEW!**



### THE GRABBER™

Easily add percussion/small cymbals & microphones to nearly every standard drum rim exactly where they're needed. Ideal for drum kit set-ups, percussion rigs, and marching drums. Standard percussion rod that is angle/height adjustable to fit your exact needs. A versatile addition to any drummer/percussionist's tool kit.

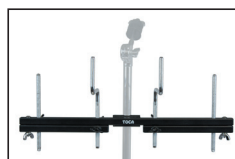
MODEL	DESCRIPTION
<b>TPGM</b>	Toca Grabber

### ACCESSORY MOUNTS

Add percussion accessories to any drum set up with this heavy duty steel mount with adjustable rods. It easily attaches to stands from 3/8" to 1-1/8", and is available in 2 expandable sizes (2/4) and (4/6). Perfect for compact spaces!

MODEL	DESCRIPTION
<b>T-ACCMT-2/4</b>	Toca Accessory Mount, 2 or 4 Post
<b>T-ACCMT-4/6</b>	Toca Accessory Mount, 4 or 6 Post

4/6 Post mount - Closed



4/6 Post Mount Expanded



2/4 Post Mount - Expanded



2/4 Post mount - Closed

### UNIVERSAL TAMBOURINE & FRAME DRUM MOUNT

This mount is a great way to add a tambourine or frame drum to any set up. Its compact size is perfect for tight places and mounts easily to any 3/8" Rod. Fits most tambourine and frame drum sizes.

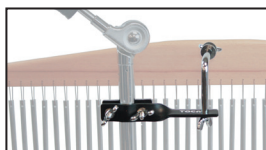
MODEL	DESCRIPTION
<b>T-UTAMMT</b>	Universal Tambourine/Frame Drum Mount



### CHIME & GUIRO MOUNTS

These heavy-duty, Black powder coated mounts with Chrome hardware easily mount and adjust to fit most stands. Securely hold chimes or Guiros in place for playing ease. Both mounts are a perfect addition to any drum set up. Try them with other hand percussion accessories!

MODEL	DESCRIPTION
<b>T-CHMT</b>	Toca Chime Mount
<b>T-GUMT</b>	Toca Guiro Mount



# PARTS



## DJEMBE PARTS

### DJEMBE FREESTYLE I AND FREESTYLE II HOOPS

MODEL	DESCRIPTION
TP-FRM9	9" Black Hoop for Freestyle I
TP-FRM10	10" Black Hoop for Freestyle I
TP-FRM12	12" Black Hoop for Freestyle I
TP-FRM14	14" Black Hoop for Freestyle I
TP-FEXR9B	9" Black Extended Hoop for Freestyle II only
TP-FEXR10B	10" Black Extended Hoop for Freestyle II only
TP-FEXR12B	12" Black Extended Hoop for Freestyle II only
TP-FEXR14B	14" Black Extended Hoop for Freestyle II only
TP-FEXR9G	9" Extended Rim, Antique Gold used for SFDMX-9AG & TF2DM-9GM
TP-FEXR10G	10" Extended Rim, Antique Gold - used for SFDMX-10AG & TF2DM-10GM
TP-FEXR12G	12" Extended Rim, Antique Gold - used for SFDMX-12AS & TF2DM-12GM
TP-FEXR14G	14" Extended Rim, Antique Gold - used for SFDMX-14AG & TF2DM-14GM
TP-FEXR9S	9" Extended Rim, Antique Silver - used for SFDMX-9AS
TP-FEXR10S	10" Extended Rim, Antique Silver - used for SFDMX-10AS
TP-FEXR12S	12" Extended Rim, Antique Silver - used for SFDMX-12AS
TP-FEXR14S	14" Extended Rim, Antique Silver - used for SFDMX-14AS

### DJEMBE FREESTYLE HEADS

TP-DJHSR7	7" Head for Colorsound
TP-FHM9	9" Goat Skin Head for Mechanically Tuned
TP-FHM10	10" Goat Skin Head for Mechanically Tuned
TP-FHM12	12" Goat Skin Head for Mechanically Tuned
TP-FHM14	14" Goat Skin Head for Mechanically Tuned
TP-FHR14	14" Goat Skin Head for Rope Tuned
GSPFS-9	9" Goat Skin Head for Rope Tuned
GSPFS-10	10" Goat Skin Head for Rope Tuned
GSPFS-12	12" Goat Skin Head for Rope Tuned
TP-FHMB9	9" Black Goat Skin Head for Mechanically Tuned
TP-FHMB10	10" Black Goat Skin Head for Mechanically Tuned
TP-FHMB12	12" Black Goat Skin Head for Mechanically Tuned
TP-FHMB14	14" Black Goat Skin Head for Mechanically Tuned
TPFHRB9	9" Black Goat Skin Head for Rope Tuned
TPFHRB10	10" Black Goat Skin Head for Rope Tuned
TPFHRB12	12" Black Goat Skin Head for Rope Tuned
TP-FHRB14	14" Black Goat Skin Head for Rope Tuned

### DJEMBE SYNTHETIC HEADS FOR FREESTYLE II SERIES

TP-DJHSR9	9" for Rope Tuned Freestyle II Djembe
TP-DJHSR10	10" for Rope Tuned Freestyle II Djembe
TP-DJHSR12	12" for Rope Tuned Freestyle II Djembe
TP-DJHSR14	14" for Rope Tuned Freestyle II Djembe
TP-DJHSM9	9" for Mechanically Tuned Freestyle II Djembe
TP-DJHSM10	10" for Mechanically Tuned Freestyle II Djembe
TP-DJHSM12	12" for Mechanically Tuned Freestyle II Djembe
TP-DJHSM14	14" for Mechanically Tuned Freestyle II Djembe

### DJEMBE HEADS FOR WOOD DRUMS

TP-DJHD13	18" Flatskin for 13" Djembe
TD-DJHD12	16" Flatskin for 12" Djembe
TD-DJHD10	14" Flatskin for 10" Djembe
TD-DJHD8	12" Flatskin for 8" or 7" Djembe
TP-DJHD13B	18" Flatskin for 13" Djembe, Black
TP-DJHD10B	14" Flatskin for 10" Djembe, Black
TD-DJHD8B	12" Flatskin for 8" or 7" Djembe, Black
TP-MDJH	20" Flatskin for Master Series Djembe

### DJEMBE FREESTYLE LUGS

TP-FRLUG-CB	Tuning Lug Complete, Black
TP-FRLUG-CG	Tuning Lug Complete, Gold
TP-FRLUG-CS	Tuning Lug Complete, Antique Silver
TP-DJRT	Rubber Tips for Djembe Lugs, (8)

## WORLD PERCUSSION PARTS

MODEL	DESCRIPTION
TP-FDMK9*	9" Mechanically Tuned Doumbek Head (Aztec Blue = AB, or African Dance = AD)
TP-FRDK9*	9" Doumbek Hoop (Aztec Blue = AB, or African Dance = AD)
TP-2547HD	8" Cuica Head with Stick
TP-2548HD	10" Cuica Head with Stick
TP-2548L	Cuica Tension Rod with Nut
TP-2548ST	Cuica Carrying Strap
TP-TTAMH	11" Tambora Hoop, Chrome
TP-TTAMHD	11" Tambora Head
TP-TTAML	Tambora Lug, Chrome
TP-TTAMSTP	Tambora Carrying Strap
TP-TJSK-HD	6" Synthetic Head for Jingle Sidekick
TP-FLEX11H	11" Full Size Flex Head
TP-FLEXJRH	9 1/2" Flex Head for Jr. Flex Drum

## CONGA AND BONGO HEADS

### LIMITED EDITION, CUSTOM DELUXE & ERIC VELEZ WOOD SERIES

TP-48011	11" Conga Head
TP-48011-3/4	11 3/4" Conga Head
TP-48012-1/2	12 1/2" Conga Head
TP-47007	7" Bongo Head
TP-47008	8 1/2" Bongo Head
TP-47009	9" Bongo Head

### SHEILA E. SIGNATURE SERIES

TP-38011-3/4	11 3/4" Conga Head
TP-38012-1/2	12 1/2" Conga Head
TP-37007	7" Bongo Head
TP-37008	8 1/2" Bongo Head

### TRADITIONAL SERIES

TP-39011	11" Conga Head
TP-39011-3/4	11 3/4" Conga Head
TP-39012-1/2	12 1/2" Conga Head
TP-37007	7" Bongo Head
TP-37008	8 1/2" Bongo Head

### ELITE PRO WOOD

TP-3111HD	11" Conga Head
TP-3111-3/4HD	11 3/4" Conga Head
TP-3112-1/2HD	12 1/2" Conga Head
TP-3170SHD	7" Bongo Head
TP-3170LHD	8 1/2" Bongo Head

### ELITE PRO FIBERGLASS

TP-3111HDF	11" Conga Head
TP-3111-3/4HDF	11 3/4" Conga Head
TP-3112-1/2HDF	12 1/2" Conga Head
TP-3170SHDF	7" Bongo Head
TP-3170LHDF	8 1/2" Bongo Head

### PLAYER'S SERIES 2400, 2600, 2700 & 2800 WOOD DRUM HEADS

TP-20110	10" Conga Head
TP-20111	11" Conga Head
TP-24006	6" Bongo Head
TP-26007	7" Bongo Head
TP-27007	7" Bongo Head
TP-27008	8 1/2" Bongo Head

### 4010 & 4070 FIBERGLASS SERIES

TP-40110	10" Conga Head
TP-40111	11" Conga Head
TP-40007	7" Bongo Head
TP-40008	8.5" Bongo Head



# PARTS

## SYNERGY WOOD, FIBERGLASS AND SYNTHETIC

MODEL	DESCRIPTION
TP-20110	10" Conga Head for Wood
TP-20111	11" Conga Head for Wood
TP-20110HF	10" Conga Head for Fiberglass
TP-20111HF	11" Conga Head for Fiberglass
TP-24006	6" Bongo Head for Wood
TP-2400634	6 3/4" Bongo Head for Wood
TP-24006SH	6" Bongo Head for Fiberglass
TP-24007SH	7" Bongo Head for Fiberglass

## CONGA AND BONGO TUNING HOOPS LIMITED EDITION SERIES

TP-48021-G	11" Toca EasyPlay Hoop, Gold
TP-48021-3/4G	11 3/4" Toca EasyPlay Hoop, Gold
TP-48022-G	12 1/2" Toca EasyPlay Hoop, Gold

## SHEILA E. SIGNATURE SERIES

TP-38021-6G	11" Traditional Hoop, Gold
TP-38021-3/4G	11 3/4" Traditional Hoop, Gold
TP-38022-G	12 1/2" Traditional Hoop, Gold
TP-37017-G	7" Traditional Bongo Hoop, Gold
TP-37018-G	8 1/2" Traditional Bongo Hoop, Gold

## ERIC VELEZ SIGNATURE SERIES

TP-48021BM	11" Toca EasyPlay Hoop, Black Mirror
TP-480213/4BM	11 3/4" Toca EasyPlay Hoop, Black Mirror
TP-48022BM	12 1/2" Toca EasyPlay Hoop, Black Mirror
TP-47017BM	7" Toca EasyPlay Bongo Hoop, Black Mirror
TP-47018BM	9" Toca EasyPlay Bongo Hoop, Black Mirror

## CUSTOM DELUXE WOOD

TP-48021-C	11" Toca EasyPlay Hoop, Chrome
TP-48021-3/4C	11 3/4" Toca EasyPlay Hoop, Chrome
TP-48022-C	12 1/2" Toca EasyPlay Hoop, Chrome
TP-47017-C	7" Toca EasyPlay Bongo Hoop, Chrome
TP-47018-C	8 1/2" Toca EasyPlay Bongo Hoop, Chrome

## CUSTOM DELUXE FIBERGLASS

TP-45018-C	8 1/2" Toca EasyPlay Hoop, Chrome
TP-45021	11" Toca EasyPlay Hoop, Chrome
TP-45021-3/4	11 3/4" Toca EasyPlay Hoop, Chrome
TP-45022	12 1/2" Toca EasyPlay Hoop, Chrome
TP-45017-C	7" Toca EasyPlay Bongo Hoop, Chrome

## TRADITIONAL SERIES

TP-39021-BC	11" Traditional Hoop, Brushed Chrome
TP-38021-3/4BC	11 3/4" Traditional Hoop, Brushed Chrome
TP-38022-BC	12 1/2" Traditional Hoop, Brushed Chrome
TP-37018-BC	8 1/2" Traditional Bongo Hoop, Brushed Chrome

## ELITE PRO WOOD

TP-3111H	11" Elite Pro Hoop, Chrome
TP-31111-3/4H	11 3/4" Elite Pro Hoop, Chrome
TP-3112-1/2H	12 1/2" Elite Pro Hoop, Chrome
TP-3170SH	Elite Pro Small Bongo Hoop, Chrome
TP-3170LH	Elite Pro Large Bongo Hoop, Chrome

## ELITE PRO FIBERGLASS

TP-3111HB	11" Elite Pro Hoop, Black Chrome
TP-31111-3/4HB	11 3/4" Elite Pro Hoop, Black Chrome
TP-3112-1/2HB	12 1/2" Elite Pro Hoop, Black Chrome
TP-3170SHB	Elite Pro Small Bongo Hoop, Black Chrome
TP-3170LHB	Elite Pro Large Bongo Hoop, Black Chrome

## SHEILA E PLAYER'S SERIES WOOD

MODEL	DESCRIPTION
TP-20120E	10" Player's Traditional Hoop, Black
TP-20121E	11" Player's Traditional Hoop, Black
TP-27020E	7" Player's Traditional Bongo Hoop, Black
TP-27021E	8 1/2" Player's Traditional Bongo Hoop, Black

## PLAYER'S 4010 & 4070 FIBERGLASS SERIES

TP-40121	11" Player's Hoop, Black
TP-40020	7" Player's Bongo Hoop, Black
TP-40021	8 1/2" Player's Bongo Hoop, Black

## PLAYER'S 2800 & 2700 WOOD SERIES

TP-20120	10" Player's Hoop, Black
TP-20121	11" Player's Hoop, Black
TP-27020	7" Player's Bongo Hoop, Black
TP-27021	8 1/2" Player's Bongo Hoop, Black

## SYNERGY CONGAS AND BONGOS

TP-2310R	10" Synergy Hoop, Black
TP-2311R	11" Synergy Hoop, Black
TP-2310RF	10" Synergy Hoop, Black for Fiberglass
TP-2311RF	11" Synergy Hoop, Black for Fiberglass
TP-2100SR	6" Synergy Bongo Hoop, Black
TP-2100LR	7" Synergy Bongo Hoop, Black
TP-2100SRF	6" Synergy Bongo Hoop, Black for Fiberglass
TP-2100LRF	7" Synergy Bongo Hoop, Black for Fiberglass

## CONGA/BONGO MISCELLANEOUS PARTS CONGA LUGS

TP-38001-G	Limited Edition Series, Gold
TP-TRC	Custom Deluxe, Elite Pro & Player's Series, Chrome
TP-TRCBM	Eric Velez Series, Black Mirror
TP-3100LUGC	Elite Pro Conga Tuning Lug, Chrome
TP-3100LUGB	Elite Pro Conga Tuning Lug, Black Chrome
TP-TRSCC	Synergy Conga Lug, Chrome

## BONGO LUGS

TP-TRB	Custom Deluxe, Chrome
TP-TPBBM	Eric Velez Series, Black Mirror
TP-37001-BC	Traditional Bongo Lug, Brushed Chrome
TP-3701LUG	Rafael Padilla, Chrome
TP-3170LUGC	Elite Pro Bongo Tuning Lug, Chrome
TP-3170LUGB	Elite Pro Bongo Tuning Lug, Black Chrome
TP-TRSB	Synergy Bongo Lug, Chrome

## CONGA PARTS

TP-HAND	Handle w/ Hardware, Chrome, 1 Pc
TP-HANDBC	Handle w/ Hardware, Brushed Chrome, 1 Pc
TP-HAND-G	Handle w/ Hardware, Gold, 1 Pc
TP-RT	Conga/Bongo Tension Rod Rubber, set of 6
TP-RUBG1	Side Plate Rubber Gaskets for Wood Drums
TP-TW	Tuning Wrench w/ Lug Grease In Pouch
TP-46002-C	Side Plates w/ Carriage Bolts, Fiberglass, Chrome
TP-38002-GN	Side Plates w/ Carriage Bolts, Wood Series, Gold
TP-38002-CN	Side Plates w/ Carriage Bolts, Wood Series, Chrome
TP-SCF	Sienta Conga Foot
TP-SCL	Sienta Conga Leg w/ Foot

## RUBBER CONGA BOTTOM

TP-RB11	11" Quinto Rubber Conga Bottom, Eric Velez
TP-RB11-3/4	11 3/4" Conga Rubber Conga Bottom, Eric Velez
TP-RB12-1/2	12" Tumba Rubber Conga Bottom, Eric Velez



# PARTS



## TIMBALE PARTS

MODEL	DESCRIPTION
TP-0014BC	14" Pro Line Timbale Hoop
TP-0014SS	14" Elite Timbale Hoop
TP-0015BC	15" Pro Line Timbale Hoop
TP-0015SS	15" Elite Timbale Hoop
TP-T1415S-14	14" Sheila E Timbale Hoop, Black
TP-T1415S-15	15" Sheila E Timbale Hoop, Black
TP-417PEN-14	14" Pete Escovedo Timbale Hoop, Gold
TP-417PEN-15	15" Pete Escovedo Timbale Hoop, Gold
TP-T1415-14HB	14" Custom Deluxe Timbale Hoop, Black Mirror
TP-T1415-15HB	15" Custom Deluxe Timbale Hoop, Black Mirror
TP-T1314-13	13" Player's Timbale Hoop, Black
TP-T1314-14	14" Player's Timbale Hoop, Black
TP-T1415LUG	Custom Deluxe Timbale Tension Lug, Brushed Nickel
TP-T1314TR	Player's Timbale Tuning Lug, Chrome
TP-T1415-14H	14" Timbale Head
TP-T1415-15H	15" Timbale Head
TP-406/8-LUG	Acrylic Timbale Tension Lug
TP-406HD	Acrylic Timbale Head
TP-406RIM	6" Acrylic Timbale Rim
TP-408HD	8" Acrylic Timbale Head
TP-408RIM	8" Acrylic Timbale Rim

## BATA HEAD REPLACEMENTS

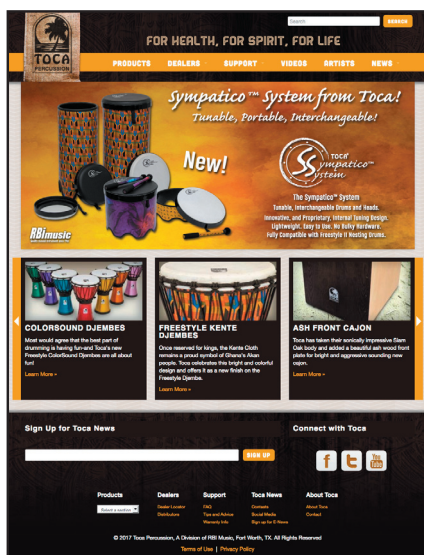
TP-33002	12" Head for Iya - Large
TP-33005	5" Head for Oconcolo - Small
TP-33006	5.5" Head for Omele - Medium
TP-33007	7" Head for Oconcolo - Small
TP-33008	7" Head for Iya - Large
TP-33009	8.5" Head for Omele - Medium
TP-33012	12" Rim for Iya - Large
TP-33015	5" Rim for Oconcolo - Small
TP-33016	5.5" Rim for Omele - Medium
TP-33017	7" Rim for Oconcolo - Small
TP-33018	7" Rim for Iya - Large
TP-33019	8.5" for Omele - Medium

## NESTING DRUMS REPLACEMENT PARTS

TP-ND8	8" Nesting drum fiberskin head
TP-ND10	10" Nesting drum fiberskin head
TP-ND12	12" Nesting drum fiberskin head
TP-ND3PC	Nesting drum fiberskin heads - 3pc. set (8", 10", 12")
TP-NT12	12" tom tom head
TP-NT14	14" tom tom head
TP-NT16	16" tom tom head
TP-NT3PC	Tom tom heads - 3pc. set (12", 14", 16")
T-NTMK	Tom tom mallets Kente Cloth
T-NTMWP	Tom tom mallets Woodstock Purple

Visit us at: [Tocapercussion.com](http://Tocapercussion.com)

For complete details on all of our products,  
Where to buy Toca, Customer Service, Events & More!



Thank you for Choosing  
Toca Percussion!





©2023 Toca Percussion • A Division of RBi Music  
All Rights Reserved • 800-424-4724 • sales@rbimusic.com  
rbimusic.com • tocapercussion.com



**RBimusic**  
Quality musical instruments since 1961